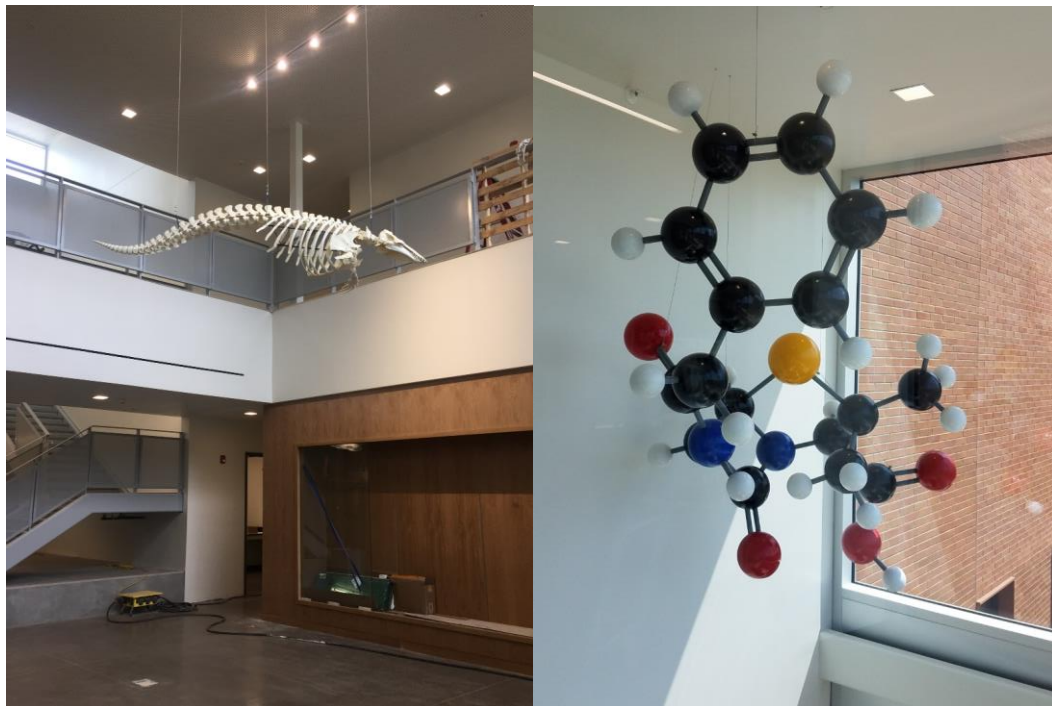




Clackamas Community College

Clackamas County, Oregon



Comprehensive Annual Financial Report

For the Fiscal Year Ended June 30, 2019

CLACKAMAS COMMUNITY COLLEGE

Comprehensive Annual Financial Report For the Fiscal Year Ended June 30, 2019

Prepared by the Business Office
Clackamas Community College
19600 Molalla Avenue
Oregon City, OR 97045-7998

Contact: Jeff.Shaffer@clackamas.edu
503-594-3101

CLACKAMAS COMMUNITY COLLEGE
TABLE OF CONTENTS
June 30, 2019

	<u>Page</u>
INTRODUCTORY SECTION	
Board of Education	6
Organization Chart	7
Letter of Transmittal	8
Certificate of Achievement	10
 FINANCIAL SECTION	
Independent Auditor's Report	12
Management's Discussion and Analysis	15
Basic Financial Statements	
Clackamas Community College	
Statement of Net Position	21
Statement of Revenue, Expenses, and Changes in Net Position	22
Statement of Cash Flows	23
Clackamas Community College Foundation	
Statement of Financial Position	25
Statement of Activities	26
Clackamas Community College	
Notes to Basic Financial Statements	27
Clackamas Community College Foundation	
Notes to Financial Statements	57
Required Supplementary Information	
Schedule of the Proportionate Share of the Net Pension Liability - OPERS	67
Schedule of Contributions OPERS - Pension	68
Notes to Required Supplementary Information OPERS - Pension.	69
Schedule of Changes in the College's Total Pension Liability & Related Ratios.	70
Schedule of the Proportionate Share of the Net OPEB Liability - OPERS.	71
Schedule of Contributions OPERS - OPEB	72
Notes to Required Supplementary Information OPERS - OPEB	73
Schedule Changes in the College's Total OPEB Liability & Related Ratios	74
 OTHER SUPPLEMENTARY INFORMATION	
Fund Descriptions	76
Schedule of Revenue, Expenditures, and Changes in Fund Balance - Budget and Actual	
General Fund.	77
Special Revenue Funds - Unrestricted Operations	79
Special Revenue Funds - Dedicated Student Fees	81
Special Revenue Funds - Externally Restricted	83
Special Revenue Funds - Reserve Funds	85
Debt Service Fund.	87
Capital Projects Funds - Unrestricted Operations	89
Capital Projects Funds - Externally Restricted.	91
Proprietary Funds - Enterprise Funds	93
Proprietary Funds - Internal Service Fund	95
 STATISTICAL SECTION	
Financial Trends	
Net Position.	98
Changes in Net Position	99

CLACKAMAS COMMUNITY COLLEGE
 TABLE OF CONTENTS
 June 30, 2019

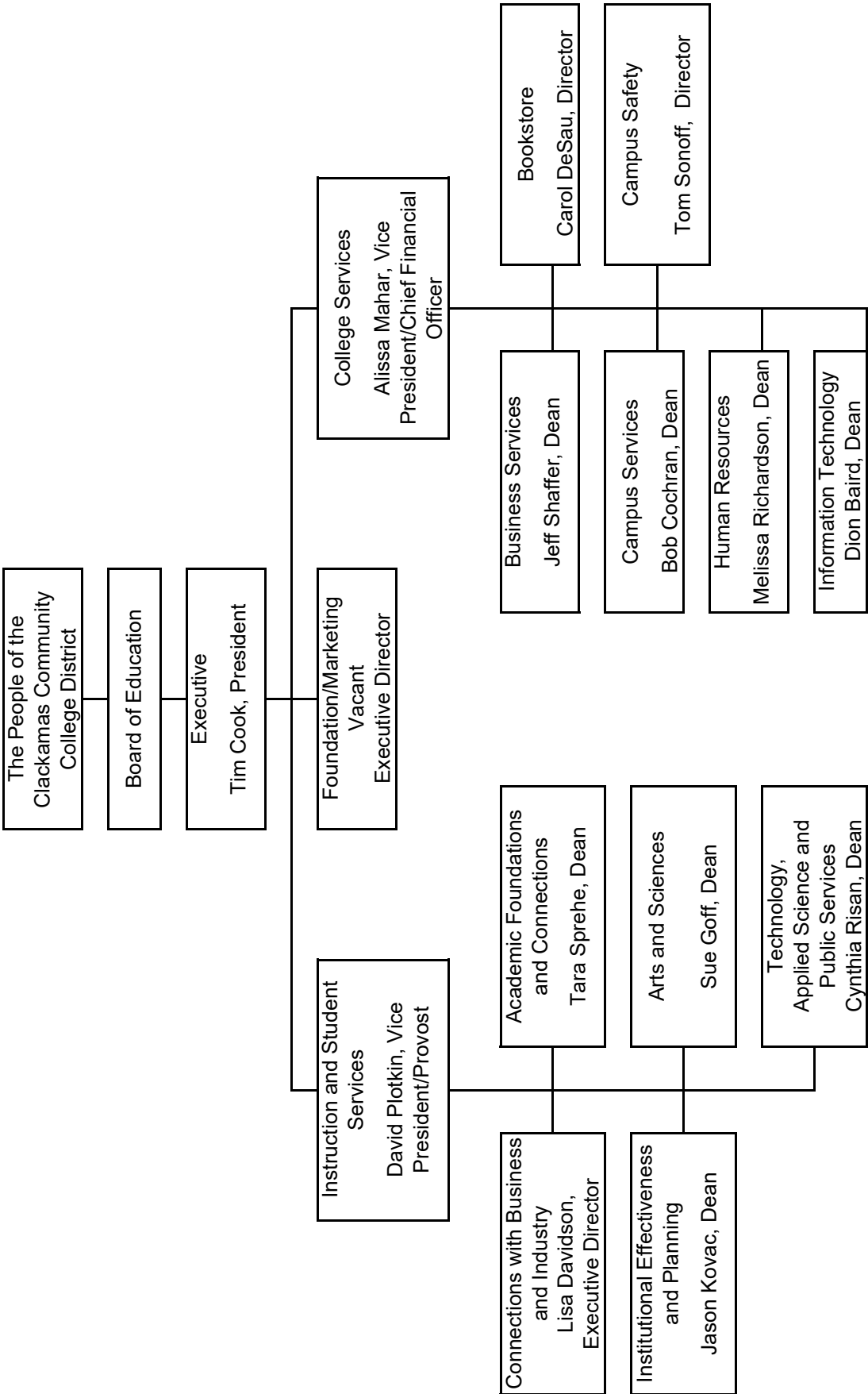
	Page
Fund Balance - Governmental Funds	101
Change in Fund Balance - Governmental Funds	103
Revenue Capacity	
Property Tax Rates, Assessed Valuation, and True Cash Value	105
Direct and Overlapping Property Tax Rates	107
Largest Taxpayers	108
Property Tax Levies and Collections	109
Debt Capacity	
Debt Ratios	111
Direct and Overlapping Bonded Debt	113
Debt Limitation	114
Demographic and Economic Information	
Population, Personal Income, and Unemployment	115
Largest Employers	116
Operating Information	
Employees	117
Students	118
Buildings	119
 AUDIT COMMENTS AND DISCLOSURES REQUIRED BY STATE REGULATIONS	
Independent Auditor's Comments Required by Oregon State Regulations	122
 GRANT COMPLIANCE	
Independent Auditor's Report on the Internal Control Over Financial Reporting and on Compliance and Other Matters Based on an Audit of the Financial Statements Performed in Accordance with <i>Government Auditing Standards</i>	126
Independent Auditor's Report on Compliance for Each Major Federal Program and Report on Internal Control Over Compliance Required by the Uniform Guidance	128
Schedule of Expenditures of Federal Awards	130
Notes to Schedule of Expenditures of Federal Awards	134
Schedule of Findings and Questioned Costs	135

INTRODUCTORY SECTION

CLACKAMAS COMMUNITY COLLEGE
 BOARD OF EDUCATION
 June 30, 2019

Name	Address	Zone	Term Expires
Chairperson: Chris Groener	PO Box 1961 201 Woodfield Ct. Oregon City, OR 97045	Zone 4	6/30/2023
Vice Chairperson: Dave Hunt	16655 SE Kingsridge Ct. Milwaukie, OR 97267	Zone 3	6/30/2021
Board Members: Greg Chaimov	12323 SE 25th Avenue Milwaukie, OR 97222-7882	Zone 1	6/30/2023
Rob Wheeler	12088 SE Reginald Ct. Happy Valley, OR 97086	Zone 2	6/30/2021
Betty Reynolds	25202 SW Petes Mountain Rd West Linn, OR 97068	Zone 5	6/30/2023
Jane Reid	PO Box 556 32795 SE Coupland Road Estacada, OR 97023	Zone 6	6/30/2021
Irene Konev	1109 SW First Avenue, #674 Canby, OR 97013	Zone 7	6/30/2021
Clerk: Dr. Tim Cook	19600 Molalla Avenue Oregon City OR 97045		

CLACKAMAS COMMUNITY COLLEGE
 ORGANIZATION CHART
 June 30, 2019



October 11, 2019

To the Board of Education and Executive Team
Clackamas Community College

Transmittal

We are pleased to present the Comprehensive Annual Financial Report (CAFR) of Clackamas Community College (the College) for the fiscal year ended June 30, 2019.

This annual audited financial report is required by Oregon Revised Statutes 297.425 through 297.555, and by various grant awards and debt covenants. The CAFR has been prepared in conformance with the financial reporting standards applicable to governmental entities set forth by the Governmental Accounting Standards Board, as well as the financial reporting standards of the Government Finance Officers Association. The College is required to undergo an annual single audit in conformity with the provisions of Title 2, Code of Federal Regulations, Part 200, Subpart F, and the consequent schedules and reports are included in this CAFR.

This report was prepared by the College's Business Office. Responsibility for the data presented, as well as accompanying disclosures, rests with the College. We believe the report is accurate and complete in all material respects and presents fairly the financial position and results of operations of the College at June 30, 2019, and for the year then ended.

We believe internal controls as designed are adequate and that they are functioning as intended. Internal controls are the attitudes, policies and procedures designed to prevent or detect material errors or irregularities in recording and reporting financial activity. Examples include approval of transactions, routine reconciliation of accounts, and managerial review of account balances and financial reports. Because the costs of internal controls should not outweigh their benefits, controls have been designed to provide reasonable, but not absolute, assurance that the financial statements are free from material misstatement.

The CAFR has been audited by Kenneth Kuhns & Co., independent Certified Public Accountants, whose opinions and reports appear in the Financial and Grant Compliance sections.

Management's discussion and analysis (MD&A), included in the Financial section, highlights the financial status of the College and explains the structure of the financial statements.

Profile of the College

Clackamas Community College was formed in 1966 to provide educational opportunities and vocational training to the residents of Clackamas County. Accredited by the Northwest Commission on Colleges and Universities since 1971, the College is a public two-year institution offering comprehensive programs in college transfer, professional technical training, continuing education, and developmental learning skills. The College's purpose is to create lifetime opportunities for success through responsive education. Campuses include the main site in Oregon City, the Harmony Road campus six miles north of Oregon City, and the utility training alliance facility in Wilsonville.

The Clackamas Community College district is essentially Clackamas County, excluding the cities of Lake Oswego and Sandy. Clackamas County is located south and south east of the city of Portland. The College district is in the Portland-Vancouver-Beaverton, OR-WA Metropolitan Statistical Area, which includes

Clackamas, Columbia, Multnomah, Washington and Yamhill counties in Oregon and Clark and Skamania counties in Washington. The five Oregon counties contain nearly half of Oregon's population. The economy of the Portland metropolitan area is broad and widely diversified.

The College is governed by a seven member Board of Education, elected by zones. The Board of Education is responsible for all activities of the College. The Board appoints the College President, who delegates administrative responsibilities to college staff.

In accordance with Oregon budget law for public corporations, the Budget Committee includes the Board and seven citizens appointed by the Board. The Budget Committee receives the budget proposed by the College President, makes any changes deemed necessary, and approves the budget. The Board of Education adopts the budget in June, prior to the start of the fiscal year, and makes appropriations for all funds, at the functional level. The budget is available to the public on the College website, as is this financial report.

The college maintains a multi-year financial forecast for the General Fund, our main operating fund. The forecast is routinely updated for changes in projected enrollment, tuition, state support, staffing and other expenditures. The forecast is monitored by the executive team and presented periodically to the Board of Education and to College staff. Board financial policies require a minimum contingency in the General Fund and allow long-term debt to be issued only for capital projects.

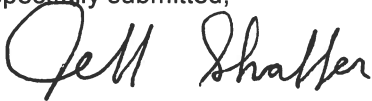
The Clackamas Community College Foundation is a legally separate nonprofit corporation organized with the mission of "friend raising and fundraising" for the College. The Foundation raises and donates funds to assist the College in various programs and facility construction, and for direct aid to students in the form of scholarships. The Foundation's Board of Directors is independent of the College's Board of Education. For financial reporting purposes, the Foundation is a component unit of the College and its financial statements are included in this CAFR.

Awards and Acknowledgements

The Government Finance Officers Association of the United States and Canada (GFOA) awarded a Certificate of Achievement for Excellence in Financial Reporting to the College for its CAFR for the fiscal year ended June 30, 2018. This was the 26th consecutive year that the College has received the award. In order to be awarded a Certificate of Achievement a government must publish an easily readable and efficiently organized CAFR. This report must satisfy both generally accepted accounting principles and applicable legal requirements. A Certificate of Achievement is valid for a period of one year only. We believe that our current CAFR continues to meet the Certificate of Achievement Program's requirements, and we are submitting it to the GFOA to determine its eligibility for another certificate.

The Business Office staff are to be commended for the work that underlies this report. We would also like to thank the Board of Education for their continued support and dedication to the financial operations of the College.

Respectfully submitted,



Jeff Shaffer,
Dean of Business Services



Government Finance Officers Association

Certificate of
Achievement
for Excellence
in Financial
Reporting

Presented to

**Clackamas Community College
Oregon**

For its Comprehensive Annual
Financial Report
for the Fiscal Year Ended

June 30, 2018

Christopher P. Morill

Executive Director/CEO

FINANCIAL SECTION

INDEPENDENT AUDITOR'S REPORT

October 11, 2019

Board of Education
Clackamas Community College
Oregon City, Oregon

Report on the Financial Statements

We have audited the accompanying financial statements of Clackamas Community College as of and for the year ended June 30, 2019, and Clackamas Community College Foundation, its discretely presented component unit, as of and for the year ended December 31, 2018, and the related notes to the financial statements, which collectively comprise Clackamas Community College's basic financial statements as listed in the table of contents.

Management's Responsibility for the Financial Statements

Management is responsible for the preparation and fair presentation of these financial statements in accordance with accounting principles generally accepted in the United States of America; this includes the design, implementation, and maintenance of internal control relevant to the preparation and fair presentation of financial statements that are free from material misstatement, whether due to fraud or error.

Auditor's Responsibility

Our responsibility is to express opinions on these financial statements based on our audit. We conducted our audit in accordance with auditing standards generally accepted in the United States of America and the standards applicable to financial audits contained in *Government Auditing Standards*, issued by the Comptroller General of the United States. Those standards require that we plan and perform the audit to obtain reasonable assurance about whether the financial statements are free from material misstatement.

An audit involves performing procedures to obtain audit evidence about the amounts and disclosures in the financial statements. The procedures selected depend on the auditor's judgment, including the assessment of the risks of material misstatement of the financial statements, whether due to fraud or error. In making those risk assessments, the auditor considers internal control relevant to the entity's preparation and fair presentation of the financial statements in order to design audit procedures that are appropriate in the circumstances, but not for the purpose of expressing an opinion on the effectiveness of the entity's internal control. Accordingly, we express no such opinion. An audit also includes evaluating the appropriateness of accounting policies used and the reasonableness of significant accounting estimates made by management, as well as evaluating the overall presentation of the financial statements.

We believe that the audit evidence we have obtained is sufficient and appropriate to provide a basis for our audit opinions.

Opinions

In our opinion, the financial statements referred to above present fairly, in all material respects, the financial position of Clackamas Community College as of June 30, 2019, and the changes in its financial position and its cash flows for the year then ended, and the financial position of Clackamas Community College Foundation as of December 31, 2018, and the changes in its net assets for the year then ended in accordance with accounting principles generally accepted in the United States of America.

Emphasis of Matter

As discussed in Note 1 to the Clackamas Community College Foundation financial statements under the caption “New Accounting Pronouncement,” during the year ended December 31, 2018, the Foundation adopted new accounting guidance related to accounting and financial reporting for not-for-profit entities. Our opinion is not modified with respect to this matter.

Other Matters

Required Supplementary Information

Accounting principles generally accepted in the United States of America require that management’s discussion and analysis and the required supplementary information as listed in the table of contents be presented to supplement the basic financial statements. Such information, although not a part of the basic financial statements, is required by the Governmental Accounting Standards Board who considers it to be an essential part of financial reporting for placing the basic financial statements in an appropriate operational, economic, or historical context. We have applied certain limited procedures to the required supplementary information in accordance with auditing standards generally accepted in the United States of America, which consisted of inquiries of management about the methods of preparing the information and comparing the information for consistency with management’s responses to our inquiries, the basic financial statements, and other knowledge we obtained during our audit of the basic financial statements. We do not express an opinion or provide any assurance on the information because the limited procedures do not provide us with sufficient evidence to express an opinion or provide any assurance.

Other Supplementary Information and Other Information

Our audit was conducted for the purpose of forming opinions on the financial statements that collectively comprise Clackamas Community College’s basic financial statements. The other supplementary information listed in the table of contents, introductory section, statistical section, and schedule of expenditures of federal awards required by Title 2 U.S. *Code of Federal Regulations* Part 200, *Uniform Administrative Requirements, Cost Principles, and Audit Requirements for Federal Awards* (Uniform Guidance) are presented for purposes of additional analysis and are not a required part of the basic financial statements.

The other supplementary information and schedule of expenditures of federal awards are the responsibility of management and were derived from and relate directly to the underlying accounting and other records used to prepare the basic financial statements. Such information has been subjected to the auditing procedures applied in the audit of the basic financial statements and certain additional procedures, including comparing and reconciling such information directly to the underlying accounting and other records used to prepare the basic financial statements or to the basic financial statements themselves, and other additional procedures in accordance with auditing standards generally accepted in the United States of America. In our opinion, the other supplementary information and schedule of expenditures of federal awards are fairly stated in all material respects in relation to the basic financial statements as a whole.

The introductory section and statistical section have not been subjected to the auditing procedures applied in the audit of the basic financial statements and, accordingly, we do not express an opinion or provide any assurance on it.

Reports on Other Legal and Regulatory Requirements

Other Reporting Required by Government Auditing Standards

In accordance with *Government Auditing Standards*, we have also issued our report dated October 11, 2019 on our consideration of Clackamas Community College's internal control over financial reporting and on our tests of its compliance with certain provisions of laws, regulations, contracts, and grant agreements and other matters. The purpose of that report is to describe the scope of our testing of internal control over financial reporting and compliance and the results of that testing, and not to provide an opinion on the internal control over financial reporting or on compliance. That report is an integral part of an audit performed in accordance with *Government Auditing Standards* in considering Clackamas Community College's internal control over financial reporting and compliance.

Other Reporting Required by Oregon State Regulations

In accordance with the Minimum Standards for Audits of Oregon Municipal Corporations, we have also issued our report dated October 11, 2019 on our consideration of Clackamas Community College's internal control over financial reporting and on our tests of its compliance with certain provisions of laws and regulations, including the provisions of Oregon Revised Statutes as specified in Oregon Administrative Rules. The purpose of that report is to describe the scope of our testing of internal control over financial reporting and compliance and the results of that testing, and not to provide an opinion on the internal control over financial reporting or on compliance.

Kenneth Kuhns & Co.

Kenneth Kuhns & Co.

CLACKAMAS COMMUNITY COLLEGE
MANAGEMENT'S DISCUSSION AND ANALYSIS
Year Ended June 30, 2019

Structure of Financial Reports

Financial information for the college is presented in this report in two very different ways, as follows.

<u>Information</u>	<u>Measurement Focus</u>	<u>Basis of Accounting</u>	<u>Location in this Report</u>
Basic financial statements	Economic resources	Full accrual	Financial section
Fund balance sheet and schedules of budget and actual	Current financial resources	Modified accrual	Other supplementary information

The basic financial statements essentially combine all of the college's funds and convert the total to what it would be if the college had been accounted for as a for-profit business since inception. These statements are designed for comparing Clackamas to other educational institutions.

The fund information reflects how the college plans, accounts for, and manages its operations. Each fund is a distinct accounting entity which segregates resources in accordance with specific restrictions or managerial purposes. Fund accounting is required by generally accepted accounting principles and Oregon budget law. All funds are accounted for as governmental funds, which measure available spendable resources.

Measurement focus defines what types of transactions are recorded. The economic resources measurement focus is similar to private-sector businesses, recording all economic events. The current financial resources focus records transactions relevant to near-term liquidity; fund balance represents available spendable resources.

The major differences between the basic financial statements and the fund information include the following.

1. In the funds and budget, purchase of capital assets is an expenditure. In the basic financial statements, purchase of capital assets does not affect the operating statement, but depreciation expense is recorded as capital assets are exhausted through use over time.
2. In the funds, issuance of and principal payments on long-term debt appear in the operating statement as other financing sources and expenditures, respectively. In the basic financial statements, changes in long-term debt principal do not affect the operating statement.
3. In the funds, PERS expenditures are the amounts paid to PERS during the fiscal year. In the basic financial statements, expenditures are adjusted for the effect of recording assets, liabilities, deferred outflows and deferred inflows related to PERS.
4. The state appropriation payment is treated differently, as detailed on the next page.

CLACKAMAS COMMUNITY COLLEGE
MANAGEMENT'S DISCUSSION AND ANALYSIS
Year Ended June 30, 2019

State Appropriation Revenue

The state appropriation is allocated annually to each of the 17 Oregon community colleges based largely on full time student enrollment. Payments are made quarterly. In 2003, the Oregon legislature reduced funding by eliminating that year's April payment. At the same time, they amended Oregon budget law and allowed community colleges to accrue in place of the lost payment the first payment in the following biennium. Clackamas chose to accrue the payment in the General Fund. About half of the colleges chose not to accrue the payment; that treatment is required for the basic financial statements, where payments are recognized as revenue in the year received. The effect of accrual is illustrated below.

<i>With accrual</i>	<i>Date of receipt</i>	<i>Without accrual</i>	
2001-02 4 payments	August 2001 October 2001 January 2002 April 2002	2001-02 4 payments	In 2001-03, Clackamas recognized 8 payments. Colleges that did not accrue recognized 7.
2002-03 4 payments	August 2002 October 2002 January 2003 July 2003	2002-03 3 payments	
2003-04 4 payments	August 2003 October 2003 January 2004 April 2004	2003-04 5 payments	In 2003-05 and subsequent bienniums, all colleges recognize 8 payments, but the pattern is 4/4 for those who accrue and 5/3 for those who do not.
2004-05 4 payments	August 2004 October 2004 January 2005 July 2005	2004-05 3 payments	

In the fund statements, state appropriation revenue is smoothed by accrual, with four payments recorded in each fiscal year. In the basic financial statements, state appropriation revenue is erratic because it includes payments received during the year, the 5/3 pattern created without accrual.

Historical revenue and the statewide Community College Support Fund (CCSF) appropriation follow.

	Number of payments		Amount (in millions)		Statewide Appropriation for Biennium
	General Fund	Basic Financial Statements	General Fund	Basic Financial Statements	
2007-08	4	5	\$19.9	\$24.0	\$494 million
2008-09	4	3	18.6	13.9	
2009-10	4	5	14.6	19.3	\$431 million
2010-11	4	3	11.8	8.4	
2011-12	4	5	11.2	14.5	\$396 million
2012-13	4	3	10.0	7.4	
2013-14	4	5	12.8	15.4	\$450 million
2014-15	4	3	13.0	10.0	
2015-16	4	5	14.7	17.6	\$550 million
2016-17	4	3	14.3	10.6	
2017-18	4	5	16.0	19.7	\$570 million
2018-19	4	3	16.0	12.1	

CLACKAMAS COMMUNITY COLLEGE
MANAGEMENT'S DISCUSSION AND ANALYSIS
Year Ended June 30, 2019

Fund Financial Information

In June 2017, the college issued the remaining \$45 million of the \$90 million in general obligation bonds authorized by district voters in November 2014 to construct buildings, modernize classrooms and equipment, and perform deferred maintenance and infrastructure projects. During the fiscal year ended June 30, 2019, construction was completed for an expanded transit center, and the second new building, the Industrial Technology Center, which opened in fall of 2018. Construction was nearly completed for the expansion of the existing DeJardin Science Complex and seismic updates to Randall Hall, which are expected to be completed in September of 2019.

The General Fund balance decreased from \$10.4 to \$9.0 million during 2018-19. Total General Fund public resources – the sum of the state appropriation and property taxes – increased \$1.4 million over 2018-19, while General Fund tuition and fee revenue decreased slightly by \$0.02 million over 2018-19. General Fund personnel costs increased \$2.1 million.

Basic Financial Statements

Governmental Accounting Standards Board (GASB) statements require that the basic financial statements incorporate the College's relative share of amounts related to PERS, Oregon's public employee retirement system. Amounts in the statement of net position for PERS represent the following.

- Net pension liability. The college's proportionate share of the total system-wide unfunded actuarial liability, net of the side account, is shown as a net pension liability. The side account was created when proceeds from the 2004 and 2005 pension bonds were invested with PERS; the side account and investment earnings on it partially fund the college's contributions to PERS, reducing the rate it would otherwise pay on wages.
- Deferred outflows include payments to PERS made after the date that the net pension liability was measured, which was June 30, 2018. These will be future reductions in the net PERS liability. Deferred outflows also include the college's proportionate share of the amount by which PERS's investment earnings are less than assumed earnings differences between expected and actual experience of the plan, and changes in assumptions.
- The pension transition liability was created in 2004 when community colleges moved into the State and Local Government (SLG) Rate Pool. It is distinct from the College's share of the system-wide unfunded actuarial liability and represents its account prior to joining the SLG rate pool.
- Deferred inflows represent the college's proportionate share of system contributions in excess of actual payments to PERS, and the change in the proportionate share percent between the prior and current measurement dates.

The intent of the GASB requirement is to capture the long-term liability for pension costs; the actual result is extreme volatility. With variable annual investment returns, the system-wide unfunded actuarial liability or asset can change dramatically, profoundly affecting the College's net position from year to year. While inclusion of PERS amounts reflects a long-term financial reality, it is beyond the influence of any one employer and obscures the results attributable to College operations and management. The following comparisons segregate the effect of PERS.

CLACKAMAS COMMUNITY COLLEGE
MANAGEMENT'S DISCUSSION AND ANALYSIS
Year Ended June 30, 2019

	<i>Fiscal Year Ended June 30, in Millions</i>					
	Exclusive of PERS			PERS		
	2018	2019	Change	2018	2019	Change
STATEMENT OF NET POSITION						
ASSETS AND DEFERRED OUTFLOWS						
Current assets	\$ 72.0	\$ 60.4	\$ (11.6)			
Noncurrent assets						
Investments	-	-	-			
Net OPEB asset				\$ -	\$ 0.3	\$ 0.3
Capital assets, net of depreciation	116.0	136.7	20.7			
Total assets	<u>188.0</u>	<u>197.1</u>	<u>9.1</u>			
Deferred outflows						
Deferred outflows related to pensions/OPEB				\$ 11.6	\$ 16.4	\$ 4.8
Total assets and deferred outflows	<u>\$188.0</u>	<u>\$ 197.1</u>	<u>\$ 9.1</u>	<u>\$ 11.6</u>	<u>\$ 16.7</u>	<u>\$ 5.1</u>
LIABILITIES AND DEFERRED INFLOWS						
Current liabilities, excluding current portion of debt	\$ 7.2	\$ 8.7	\$ 1.5			
Liabilities for long-term debt, with current portion						
Bonds and full faith and credit obligations	136.8	131.3	(5.5)			
Compensated absences and early retirement	10.7	12.9	2.2			
Pension transition liability				\$ 4.0	\$ 3.8	\$ (0.2)
Net pension liability				28.3	32.3	4.0
Total liabilities	<u>154.7</u>	<u>152.9</u>	<u>(1.8)</u>	<u>32.3</u>	<u>36.1</u>	<u>3.8</u>
Deferred inflows related to pensions/OPEB				3.5	5.7	2.2
Total liabilities and deferred inflows	<u>154.7</u>	<u>152.9</u>	<u>(1.8)</u>	<u>35.8</u>	<u>41.8</u>	<u>6.0</u>
NET POSITION						
Net position	33.3	44.20	10.9	(24.2)	(25.10)	(0.9)
Total liabilities, deferred inflows and net position	<u>\$188.0</u>	<u>\$ 197.1</u>	<u>\$ 9.1</u>	<u>\$ 11.6</u>	<u>\$ 16.7</u>	<u>\$ 5.1</u>
STATEMENT OF REVENUE, EXPENSES, AND CHANGES IN NET POSITION						
REVENUE						
Tuition and fees	\$ 17.1	\$ 16.4	\$ (0.7)			
State appropriations	19.7	12.1	(7.6)			
Property taxes	25.1	26.9	1.8			
All other revenue	21.1	36.6	15.5			
Total revenue	<u>83.0</u>	<u>92.0</u>	<u>9.0</u>			
EXPENSES						
Instruction	28.0	28.9		1.8	1.6	
Instructional support	7.4	8.0		0.4	0.4	
Student services	6.4	6.9		0.4	0.4	
College support	12.3	13.4		0.5	0.5	
Plant operations and maintenance	3.6	3.9		0.1	0.1	
Plant additions	0.4	1.7				
Financial aid	8.6	7.3				
All other expenses	10.6	9.1				
Total expenses	<u>77.3</u>	<u>79.2</u>	<u>1.9</u>	<u>3.2</u>	<u>3.0</u>	<u>(0.2)</u>
CHANGE IN NET POSITION	<u>5.7</u>	<u>12.8</u>	<u>7.1</u>	<u>(3.2)</u>	<u>(3.0)</u>	<u>0.2</u>
NET POSITION						
Net position - beginning of the year, as originally reported	\$ 6.6	\$ 9.2				
Net position - end of the year	<u>\$ 9.2</u>	<u>\$ 18.9</u>				

CLACKAMAS COMMUNITY COLLEGE
MANAGEMENT'S DISCUSSION AND ANALYSIS
Year Ended June 30, 2019

Basic Financial Statements - Exclusive of PERS

Exclusive of PERS, net position increased \$12.8 million.

Basic Financial Statements - PERS

Net position decreased \$3 million for the College's share of PERS, as the system-wide unfunded actuarial liability and related deferred inflows and outflows of resources have grown, largely due to insufficient investment returns and a ruling by the Oregon Supreme Court that re-instated certain post-retirement COLA benefits. Employer rates are projected to increase substantially for both the 2017-19 and 2019-21 bienniums.

Capital Assets and Long-term Debt

The College's investment in capital assets increased by \$20.7 million, net of accumulated depreciation, with investments in equipment and construction in progress. Details of the changes in capital assets are in Note 3. Details of the changes in long-term debt activity are in Note 4 of the Notes to Basic Financial Statements.

The principal amount of general obligation and other full faith and credit debt outstanding at June 30, and repayment sources, follow.

<u>Debt</u>	<u>Amount (in millions)</u>	<u>Repayment Source</u>	<u>Repayment Method</u>
General obligation (GO) bonds	\$101.1	Annual property tax levy	Scheduled payments to trustee
Pension bonds	21.6	General college operations	Trustee intercepts a portion of state appropriation paid to the college

State statutes limit the amount of general obligation debt the college may issue to 1.5% of real market value of properties within the College district. The outstanding general obligation bonds are 12% of the legal debt limit.

This page intentionally left blank.

CLACKAMAS COMMUNITY COLLEGE
STATEMENT OF NET POSITION
June 30, 2019

ASSETS	
Current assets	
Cash and cash equivalents	\$ 43,742,229
Short-term investments	12,025,600
Receivables, net	
Accounts	2,567,088
Property taxes	796,466
Interest Receivable	95,813
Inventories	163,665
Prepaid expenses and other current assets	959,200
Total current assets	<u>60,350,061</u>
Noncurrent assets	
Postemployment healthcare benefits asset	318,741
Non-depreciable capital assets	37,461,832
Depreciable capital assets	142,033,245
Less accumulated depreciation	<u>(42,811,812)</u>
Total noncurrent assets	<u>137,002,006</u>
Total assets	<u>197,352,067</u>
DEFERRED OUTFLOWS OF RESOURCES	
Deferred outflows related to pensions and OPEB	16,410,896
Total assets and deferred outflows	<u>\$ 213,762,963</u>
LIABILITIES	
Current liabilities	
Accounts payable	\$ 5,525,970
Wages, taxes and benefits	2,637,602
Unearned revenue	333,800
Accrued interest	188,488
Current portion of long-term debt	8,073,970
Total current liabilities	<u>16,759,830</u>
Noncurrent liabilities	
General obligation bonds	109,780,946
Pension bonds	21,519,614
Compensated absences	1,318,970
Obligations for postemployment healthcare benefits	11,623,131
Pension transition liability	3,806,811
Net pension liability	32,346,776
Less current portion of long-term debt	<u>(8,073,970)</u>
Total noncurrent liabilities	<u>172,322,278</u>
Total liabilities	<u>189,082,108</u>
DEFERRED INFLOWS OF RESOURCES	
Deferred inflows related to pensions and OPEB	5,742,475
NET POSITION	
Net investment in capital assets	46,449,134
Restricted for debt service and student financial aid	695,340
Unrestricted	<u>(28,206,094)</u>
Total net position	<u>18,938,380</u>
Total liabilities, deferred inflows and net position	<u>\$ 213,762,963</u>

The Accompanying Notes to the Basic Financial Statements are an Integral Part of This Statement

CLACKAMAS COMMUNITY COLLEGE
STATEMENT OF REVENUE, EXPENSES, AND CHANGES IN NET POSITION
Year Ended June 30, 2019

OPERATING REVENUE	
Tuition and fees	\$ 16,361,665
Operating grants and contracts	
State	3,933,064
Local	2,492,750
Federal	9,492,349
Auxiliary enterprises	
Bookstore	481,891
Customized Training	407,045
Other operating revenue	1,068,085
	<hr/>
Total operating revenue	34,236,849
OPERATING EXPENSES	
Instruction	30,507,025
Instructional support	8,411,772
Student services	7,326,131
College support	13,918,614
Plant operations and maintenance	3,923,935
Plant additions	1,710,046
Financial aid	7,283,087
Auxiliary enterprises	
Bookstore	307,889
Customized Training	388,049
Depreciation expense	3,285,335
	<hr/>
Total operating expenses	77,061,883
Operating loss	<hr/> <u>(42,825,034)</u>
NONOPERATING REVENUE (EXPENSES)	
State appropriation	12,143,616
Property taxes	26,873,965
Investment income	1,954,342
Interest expense	(5,124,569)
Gain on disposal of capital assets	12,286
	<hr/>
Net nonoperating revenue (expenses)	35,859,640
Income (loss) before capital contributions	(6,965,394)
CAPITAL CONTRIBUTIONS	<hr/> <u>16,732,387</u>
Increase in net position	9,766,993
NET POSITION	
Net position - beginning of the year	<hr/> <u>9,171,387</u>
Net position - end of the year	<hr/> <u>\$ 18,938,380</u>

The Accompanying Notes to the Basic Financial Statements are an Integral Part of This Statement

CLACKAMAS COMMUNITY COLLEGE
STATEMENT OF CASH FLOWS
Year Ended June 30, 2019

CASH FLOWS FROM OPERATING ACTIVITIES	
Cash received from customers	\$ 34,867,045
Cash payments to suppliers for goods and services	(18,404,462)
Cash payments to employees for services	<u>(52,310,897)</u>
Net cash used by operating activities	<u>(35,848,314)</u>
CASH FLOWS FROM NONCAPITAL FINANCING ACTIVITIES	
Cash received from state appropriation	12,143,616
Cash received from property taxes	19,970,653
Principal paid on pension bonds	(1,470,000)
Interest paid on pension bonds	<u>(1,191,682)</u>
Net cash provided by noncapital financing activities	<u>29,452,587</u>
CASH FLOWS FROM CAPITAL FINANCING ACTIVITIES	
Purchase of capital assets	(22,730,523)
Proceeds from sale of capital assets	12,286
Cash received from capital contributions	17,600,727
Cash received from property taxes levied for capital debt	6,949,041
Principal paid on capital-related long-term debt	(5,820,000)
Interest paid on capital-related long-term debt	<u>(2,149,950)</u>
Net cash used by capital financing activities	<u>(6,138,419)</u>
CASH FLOWS FROM INVESTING ACTIVITIES	
Maturities of investments	13,499,533
Investment income	<u>1,831,200</u>
Net cash provided by investing activities	<u>15,330,733</u>
Increase in cash and cash equivalents	2,796,587
Beginning cash and cash equivalents	<u>40,945,642</u>
Ending cash and cash equivalents	<u><u>\$ 43,742,229</u></u>

The Accompanying Notes to the Basic Financial Statements are an Integral part of This Statement

CLACKAMAS COMMUNITY COLLEGE
STATEMENT OF CASH FLOWS (continued)
Year Ended June 30, 2019

Reconciliation of operating loss to net cash used by operating activities:

Operating loss	<u>\$ (42,825,034)</u>
Adjustments to reconcile operating loss to net cash used by operating activities:	
Depreciation	3,285,335
(Increase) decrease in:	
Operating receivables, net of allowance for uncollectibles	532,660
Inventories	51,854
Prepaid expenses and other current assets	(447,531)
Postemployment healthcare benefits asset	(203,740)
Deferred outflows related to pensions and OPEB	(4,776,735)
Increase (decrease) in:	
Operating accounts payable	(8,080)
Wages, taxes and benefits	214,238
Unearned revenue	97,536
Compensated absences	72,655
Obligations for postemployment health care benefits	2,044,075
Pension transition liability	(156,921)
Net pension liability	4,029,637
Deferred inflows related to pensions and OPEB	<u>2,241,737</u>
Net adjustments	<u>6,976,720</u>
Net cash used by operating activities	<u><u>\$ (35,848,314)</u></u>

NONCASH CAPITAL, FINANCING AND INVESTING ACTIVITIES

Accounts receivable, net	\$ 868,340
Capital contributions	(868,340)
Investments	(125,114)
Increase in fair value of investments	125,114
Amortization of premium/discount on long-term debt	(771,807)
Amortization of deferred interest bonds	2,563,377
Interest expense	<u>(1,791,570)</u>
Total noncash capital, financing and investing activities	<u><u>\$ -</u></u>

The Accompanying Notes to the Basic Financial Statements are an Integral part of This Statement

CLACKAMAS COMMUNITY COLLEGE FOUNDATION
STATEMENT OF FINANCIAL POSITION
December 31, 2018

Assets

Cash and cash equivalents	\$ 384,170
Unconditional promises to give	80,315
Prepaid expenses	10,890
Investments	16,727,108
Historical letter	<u>11,250</u>
 Total assets	 <u><u>\$ 17,213,733</u></u>

Liabilities and Net Assets

Liabilities:	
Accounts payable	\$ 239,459
Deferred revenue	<u>2,100</u>
 Total liabilities	 <u>241,559</u>
 Net assets:	
Without donor restrictions	578,128
With donor restrictions	<u>16,394,046</u>
 Total net assets	 <u>16,972,174</u>
 Total liabilities and net assets	 <u><u>\$ 17,213,733</u></u>

The accompanying notes are an integral part of this statement.

CLACKAMAS COMMUNITY COLLEGE FOUNDATION
STATEMENT OF ACTIVITIES
Year Ended December 31, 2018

	Without Donor Restrictions	With Donor Restrictions	Total
Revenues and other support:			
Contributions	\$ 117,750	\$ 855,403	\$ 973,153
Donated services	562,501	-	562,501
Donated materials	41,580	-	41,580
Realized investment earnings	96,080	471,335	567,415
Other income	32,736	273,948	306,684
Net assets released from restrictions for scholarships and program activities	1,148,985	(1,148,985)	-
Net assets released from restrictions for general administration	152,202	(152,202)	-
Reclassifications	(146,265)	146,265	-
Total revenues and other support	2,005,569	445,764	2,451,333
Expenses and losses:			
Program services:			
Scholarships and grants	584,666	-	584,666
Programs and instruction support	565,960	-	565,960
Materials donated to the College	41,580	-	41,580
Total program services	1,192,206	-	1,192,206
Supporting services:			
General administration	273,719	-	273,719
Donated services	562,501	-	562,501
Total supporting services	836,220	-	836,220
Net unrealized losses on investments	325,700	1,731,598	2,057,298
Total expenses and losses	2,354,126	1,731,598	4,085,724
Change in net assets	(348,557)	(1,285,834)	(1,634,391)
Net assets, January 1, 2018	926,685	17,679,880	18,606,565
Net assets, December 31, 2018	\$ 578,128	\$ 16,394,046	\$ 16,972,174

The accompanying notes are an integral part of this statement.

CLACKAMAS COMMUNITY COLLEGE
NOTES TO BASIC FINANCIAL STATEMENTS
Year Ended June 30, 2019

1. Summary of Significant Accounting Policies

The Reporting Entity

Clackamas Community College (the College), a municipal corporation under the laws of the State of Oregon, is governed by an elected seven-member board. As required by generally accepted accounting principles, all significant activities and organizations have been included in the financial statements. For financial reporting purposes, the College's financial statements include all funds for which the College is financially accountable.

The Clackamas Community College Foundation is a legally separate nonprofit 501(c)(3) corporation with the purpose of providing funds to support the mission and students of the College. Although the Foundation selects its Board of Directors independently of the College Board of Education, the Foundation is a component unit as defined in Governmental Accounting Standards Board Statement No. 39 because of the nature and significance of its financial relationship with the College and its students. Financial statements and notes for the Foundation follow the College basic financial statements in this report.

Basis of Presentation

The financial statements have been prepared in accordance with accounting principles generally accepted in the United States of America as prescribed by the Governmental Accounting Standards Board (GASB), including Statement No. 34, *Basic Financial Statements – and Management's Discussion and Analysis – for State and Local Governments*, and Statement No. 35, *Basic Financial Statements -- and Management's Discussion and Analysis -- for Public Colleges and Universities*, issued in June and November, 1999, as amended by Statement No. 63, *Financial Reporting of Deferred Outflows of Resources, Deferred Inflows of Resources, and Net Position*, issued in June 2011. The College follows the "business-type activities" reporting requirements of GASB Statement No. 35 that provides a comprehensive one-column look at the College's financial activities. The Governmental Accounting Standards Board (GASB) is the accepted standard setting body for establishing governmental accounting and financial reporting principles.

Basis of Accounting

The basic financial statements are accounted for on the flow of economic resources measurement focus and are prepared on the accrual basis of accounting, whereby revenues are recorded when earned and expenses are recorded at the time liabilities are incurred. Property taxes are recognized as revenues in the years for which they are levied. Grants and similar items are recognized as revenues as soon as all eligibility requirements imposed by the grantor have been met.

Use of Estimates

The preparation of basic financial statements in accordance with accounting principles generally accepted in the United States of America requires management to make estimates and assumptions that effect the reported amounts of assets and liabilities and disclosure of contingent assets and liabilities at the date of the basic financial statements and reported amounts of revenues and expenses during the reporting period. Actual results could differ from those estimates.

Use of Restricted Resources

The College receives resources restricted to specific uses by debt covenants, grants, contracts, laws and regulations, and enabling legislation. Unrestricted resources are available for any College purpose.

CLACKAMAS COMMUNITY COLLEGE
NOTES TO BASIC FINANCIAL STATEMENTS
Year Ended June 30, 2019

1. Summary of Significant Accounting Policies (Continued)

When an expense is incurred for purposes for which both restricted and unrestricted assets are available, the College uses restricted resources first.

Cash, Cash Equivalents and Investments

Cash and cash equivalents includes amounts in demand deposits, the Oregon Local Government Investment Pool, the Oregon Local Government Intermediate Fund, and short-term investments with original maturities of three months or less from the date of acquisition.

State statutes authorize the College to invest in banker's acceptances, time certificates of deposit, repurchase agreements, obligations of the U.S. Treasury and its agencies, the agencies and instrumentalities of the United States and the States of Oregon, Washington, Idaho, and California, the Oregon State Treasury's Local Government Investment Pool and Local Government Intermediate Fund, demand deposits, and fixed or variable life insurance or annuity contracts for funding deferred compensation. Investments are stated at fair value.

Receivables

All accounts, grants, and property taxes receivable are shown net of an allowance for uncollectible accounts. Accounts receivable include amounts due from local, state, and federal agencies for programs and from students for the balance of tuition and fees.

Ad valorem property taxes are levied and become a lien on all taxable property as of July 1. Property taxes are payable on November 15. Collection dates are November 15, February 15 and May 15. Discounts are allowed if the amount due is received by November 15. Taxes unpaid and outstanding on May 16 are considered delinquent.

Inventory

Inventory held for resale is valued at the lower of cost or market, with cost on the first-in first-out basis.

Capital Assets

Capital assets include land; construction in progress; buildings, building improvements, land improvements and infrastructure; equipment, vehicles, furniture and artwork; and library collections, with a useful life of more than one year. The College's capitalization threshold is \$5,000 except that all licensed vehicles are capitalized regardless of cost. Donated capital assets, donated works of art and similar items, and capital assets received in a service concession arrangement are reported at acquisition value. The costs of normal maintenance and repairs that do not add to the value or functionality of the assets' lives are not capitalized, but are expensed as incurred.

Capital assets other than land and construction in progress are depreciated using the straight-line method over the following useful lives:

Buildings and building improvements	45 - 60	years
Land improvements	15 - 25	years
Infrastructure	100	years
Equipment	5 - 25	years
Library collections	10	years

CLACKAMAS COMMUNITY COLLEGE
NOTES TO BASIC FINANCIAL STATEMENTS
Year Ended June 30, 2019

1. Summary of Significant Accounting Policies (Continued)

Deferred Outflows of Resources and Deferred Inflows of Resources

Deferred outflows of resources represent a consumption of net position that applies to a future period and so will not be recognized as an outflow of resources (expense/expenditure) until then. Deferred inflows of resources represents an acquisition of net position that applies to a future period and will not be recognized as an inflow of resources (revenue) until that time.

Pensions

Public Employees Retirement System - For purposes of measuring the net pension liability, deferred outflows of resources and deferred inflows of resources related to pensions, and pension expense, information about the fiduciary net position of the Oregon Public Employees Retirement System (PERS) and additions to/deductions from PERS' fiduciary net position have been determined on the same basis as they are reported by PERS. For this purpose, benefit payments (including refunds of employee contributions) are recognized when due and payable in accordance with the benefit terms. Investments are reported at fair value.

Early Retirement Program – The College offers a voluntary early retirement program to exempt, full time classified, and full time faculty employees who were hired prior to July 1, 2011, have completed twelve consecutive years of service with the College just prior to retirement, are not yet 65 years of age, and elect the option of early retirement. The College pays a monthly stipend for eligible retirees, which ceases after a maximum of 48 months or when the retiree reaches age 62. The stipend amount is fixed given the employee's hire date and salary grade at retirement.

Postemployment Healthcare Benefits Obligation

Public Employees Retirement System - For purposes of measuring the net OPEB liability, deferred outflows of resources and deferred inflows of resources related to OPEB, and OPEB expense, information about the fiduciary net position of the Oregon Public Employees Retirement System (PERS) and additions to/deductions from PERS' fiduciary net position have been determined on the same basis as they are reported by PERS. For this purpose, benefit payments (including refunds of employee contributions) are recognized when due and payable in accordance with the benefit terms. Investments are reported at fair value.

Early Retirement Program – For eligible early retirees described above, the College also contributes a set monthly amount toward health insurance premiums; the retiree pays any premium for their selected coverage which is in excess of the College contribution. The health insurance contribution ceases at age 65.

Compensated Absences

At June 30, vacation hours in excess of 184 for classified employees are lost. Vacation accrual ceases for exempt employees when the balance exceeds 384 hours. Unused vacation is payable at termination. Vacation pay is accrued when earned in the Statement of Net Position. The College has included the hourly pay rate and the related social security and pension obligations for all hours accrued at June 30. In accordance with the provisions of Governmental Accounting Standards Board Statement No. 16, *Accounting for Compensated Absences*, no liability is recorded for nonvested accumulated rights to receive sick pay benefits.

CLACKAMAS COMMUNITY COLLEGE
NOTES TO BASIC FINANCIAL STATEMENTS
Year Ended June 30, 2019

1. Summary of Significant Accounting Policies (Continued)

Long-term Debt

Debt premiums and discounts are deferred and amortized over the life of the debt using the straight-line method, which approximates the effective interest method.

Operating and Non-operating Revenues and Expenses

Operating revenues and expenses generally result from providing services to students. Principal operating revenues include tuition and fees, grants and contracts for educational services, and charges for goods and services. Operating expenses include the cost of faculty, student services and financial aid, administration, facility operations and maintenance, bookstore operations and depreciation. All other revenues, including state community college support and property taxes, and expenses not meeting this definition are reported as non-operating revenues and expenses.

Federal Financial Assistance Programs

The College participates in federally funded direct loans, Work-Study, Pell grants, and SEOG grants. Federal programs are audited in accordance with Title 2 U.S. Code of Federal Regulations Part 200, Uniform Administrative Requirements, Cost Principles, and Audit Requirements for Federal Awards (Uniform Guidance).

Scholarship Allowances

Financial aid to students is reported in the basic financial statements under the alternative method as prescribed by the National Association of College and University Business Officers (NACUBO). Certain aid such as loans and funds provided to students as awarded by others is accounted for as a third party payment (credited to the student's account as if the student made the payment). All other aid is reflected in the basic financial statements as operating expenses, or scholarship allowances, which reduce revenues. The amount reported as operating expense represents the portion of aid that was provided to the student in the form of cash. Scholarship allowances represent the portion of aid provided to the student in the form of reduced tuition. Tuition and fees are shown net of scholarship allowances of \$3,158,032 for the year ended June 30, 2019. Under the alternative method, these amounts are computed by allocating the cash payments to students, excluding payments for services, on the ratio of total aid to the aid not considered to be third party aid.

Net Position

GASB Statement No. 63 reports equity as "Net Position" rather than "Net Assets". The net position balance of \$18,938,380 at June 30, 2019 includes \$46,449,134 invested in capital assets, \$695,340 of restricted net position, and a deficit unrestricted amount of (\$28,206,094).

Budget

The College's legal spending authority is defined in the resolution passed by the Board of Education making appropriations and adopting the budget. The legally adopted appropriations are by fund and object category. One or more funds which are maintained for accounting purposes may be considered as a single fund for the purposes of appropriation. Categories defined in Oregon local budget law include personnel services, materials and services, capital outlay, debt service, transfers out, and contingency.

The College budgets and accounts for all funds, including proprietary funds, using the current financial resources measurement focus and the modified accrual basis of accounting, consistent with Oregon local

CLACKAMAS COMMUNITY COLLEGE
NOTES TO BASIC FINANCIAL STATEMENTS
Year Ended June 30, 2019

1. Summary of Significant Accounting Policies (Continued)

budget law. In contrast, the basic financial statements are reported using the economic resources measurement focus and the accrual basis of accounting. Schedules comparing actual to budget on the budget basis are provided for all funds.

In 2017-18, the College began to use an integrated strategic planning process to drive its budget process in order to align its process with GFOA Best Practices in Community College Budgeting. Throughout the academic school year, department managers do assessments of their departments, external and internal data is compiled during summer, and then department plans and goals are created in fall based on that assessment and data analysis. Those department plans then feed into institutional priorities, which then generate prioritized resource requests through the budgeting process in winter. The college then establishes a budget committee. The budget committee receives and approves the budget in spring. Public notices of the budget committee meetings and the public hearing prior to adoption are published in accordance with Oregon local budget law. The Board of Education may amend the budget prior to adoption; however, budgeted expenditures for each fund may not be increased by more than ten percent. The budget is adopted, appropriations are made and the tax levy is declared by the Board of Education no later than June 30.

Expenditures cannot legally exceed appropriations. The Board of Education can change the budget throughout the year by appropriation transfers and supplemental budgets as authorized by Oregon Revised Statutes. The budget basis financial schedules display the original adopted budget, and the final budget including all appropriation transfers and supplemental budgets. Management may amend line items in the budget without approval by the Board of Education as long as appropriation levels (the legal level of control) are not changed. The College's appropriations lapse at year end. The College had no outstanding encumbrances at June 30, 2019.

2. Cash, Cash Equivalents and Investments

Cash (stated at cost) and investments (fair value) on June 30, 2019 included the following:

Cash on hand	\$	9,150
Deposits with financial institutions		602,614
Investment in Oregon Local Government Investment Pool		35,664,997
Investment in Oregon Local Government Intermediate Pool		7,465,468
Total cash and cash equivalents		<u>43,742,229</u>
Investments in U.S. Government/Agency Bonds		12,025,600
Total cash and investments	<u>\$</u>	<u>55,767,829</u>

CLACKAMAS COMMUNITY COLLEGE
NOTES TO BASIC FINANCIAL STATEMENTS
Year Ended June 30, 2019

2. Cash, Cash Equivalents and Investments (continued)

Deposits with Financial Institutions

Deposits with financial institutions are bank demand deposits. According to the College's records, these accounts total \$602,614 on June 30, 2019. The bank statements reflect a balance of \$1,661,004 at year end. Of this amount, \$250,000 is covered by federal depository insurance.

The Oregon State Treasurer is responsible for monitoring public funds held by bank depositories in excess of FDIC insured amounts, and for assuring that public funds on deposit are collateralized to the extent required by Oregon Revised Statutes (ORS) Chapter 295. ORS Chapter 295 requires depository banks to place and maintain on deposit with a third-party custodian bank securities having a value of 10%, 25% or 110% of public funds on deposit depending primarily on the capitalization level of the depository bank.

Custodial credit risk for deposits is the risk that in the event of a bank failure, the College's deposits may not be returned. The College follows state law with respect to custodial credit risk and has not adopted a separate policy. Of the College's bank balance, \$1,411,004 was exposed to custodial credit risk at June 30, 2019 because deposits in excess of FDIC insurance were uncollateralized and/or were collateralized but not held by the third-party custodian bank in the College's name.

Investments

The College's investments at June 30, 2019 consisted of:

	Fair Value	Percent
U.S Government/Agency Bonds:		
US Treasury Notes	\$ 3,997,920	7.2%
Federal Farm Credit Banks	8,027,680	14.6%
Investment in Oregon Local Government		
Investment Pool	35,664,997	64.7%
Intermediate Fund	7,465,468	13.5%
Total Investments	\$ 55,156,065	100.0%
U.S Government/Agency Bonds by Maturity:	Fair Value	Percent
Less than one year	\$ 12,025,600	100.0%
One to two years	-	0.0%
Total U.S. Government/Agency Bonds	\$ 12,025,600	100.0%

The Oregon Local Government Investment Pool (OLGIP) is part of the Oregon Short-Term Fund (Fund) that is approved for the investment of State of Oregon (State) funds. The Oregon Short-Term Fund is not registered with the U.S. Securities and Exchange Commission as an investment company. The Fund currently has no credit rating as assigned by the credit rating agencies. At June 30, 2019 the Fund's composite weighted average rating was equivalent to S&P's AA. Weighted average maturities of investments in the Oregon Short Term Fund at June 30, 2019 were: 59% mature within 93 days, 19% mature from 94 days to one year, and 22% mature from one to three years. Amounts in the Oregon Local Government Investment Pool are not required by law to be collateralized. The College's investment in the

CLACKAMAS COMMUNITY COLLEGE
NOTES TO BASIC FINANCIAL STATEMENTS
Year Ended June 30, 2019

2. Cash, Cash Equivalents and Investments (continued)

Oregon Local Government Investment Pool is in an open-ended, no-load diversified portfolio pool. Participants' account balances in the pool are determined by the amount of participants' deposits, adjusted for withdrawals and distributed interest. Interest is calculated and accrued daily on each participant's account based on the ending account balance and a variable interest rate determined periodically by the Oregon Short-Term Fund.

The Oregon Local Government Intermediate Fund (OLGIF) is a commingled investment pool for local governments offered by Oregon State Treasury (OST) due to Legislation HB2140 and pursuant to ORS Chapter 294. OLGIF provides qualified local government participants with a vehicle to invest assets over an intermediate time horizon (three to five years). Participants invest in OLGIF by purchasing units of the Fund. Units in OLGIF represent a divisible interest in the underlying assets of the Fund. The value of each participant's investment is determined on a proportional basis to the net market value of the entire portfolio. The value of OLGIF's underlying bond market investments are marked-to-market on a daily basis. The value of OLGIF's underlying holdings and the net asset value (NAV) of participant investments fluctuates due to market movements and changes in the underlying holdings. OLGIF is not registered with the U.S. Securities and Exchange Commission as an investment company. The Fund currently has no credit rating as assigned by the credit rating agencies. At June 30, 2019 the Fund's composite weighted average rating was equivalent to S&P's AA. The weighted-average maturity of the investments held by the Fund at June 30, 2019 was 2.68 years. Amounts in the OLGIF are not required by law to be collateralized.

The State's investment policies are governed by Oregon Revised Statutes and the Oregon Investment Council (Council). The State Treasurer is the investment officer for the Council and is responsible for all funds in the State Treasury. Investments in the Oregon Short-Term Fund are further governed by portfolio guidelines issued by the Oregon Short-Term Fund Board, with Council approval. Investments in the Oregon Local Government Intermediate Fund are further governed by portfolio guidelines approved by the Council.

The College's investments in U.S. Government/Agency Bonds are reported at fair value within the fair value hierarchy established by generally accepted accounting principles. The hierarchy is based on the valuation inputs used to measure the fair value of the asset. Level 1 inputs are quoted prices in active markets for identical assets; Level 2 inputs are significant other observable inputs; Level 3 inputs are significant unobservable inputs. The College's investments in U.S. Government/Agency Bonds are valued using quoted market prices (Level 1 inputs).

Credit risk for investments is the risk that an issuer or other counterparty to an investment will not fulfill its obligation. The College's U.S. Government/Agency Bonds are rated AA+ by Standard and Poor's and Aaa by Moody's.

Custodial credit risk for investments is the risk that, in the event of the failure of the counterparty, the College will not be able to recover the value of its investments or collateral securities that are in the possession of an outside party. The securities underlying the College's investments in U.S. Government/Agency Bonds are held by the College's counterparty, not in the College's name.

As of June 30, 2019 and for the year then ended, the College was in compliance with State of Oregon statutes regarding types of investments. State statutes authorize the College to invest in certain types of investments as discussed in Note 1. The College has no investment policy that would further limit its investment choices.

CLACKAMAS COMMUNITY COLLEGE
NOTES TO BASIC FINANCIAL STATEMENTS
Year Ended June 30, 2019

3. Capital Assets

Changes in capital assets during the year ended June 30, 2019 are as follows:

	Balance July 1, 2018	Increases	Decreases	Balance June 30, 2019
Capital assets not being depreciated:				
Land	\$ 7,403,245	\$ -	\$ -	\$ 7,403,245
Construction in progress	27,821,267	23,523,183	(21,285,863)	30,058,587
Total capital assets not being depreciated	<u>35,224,512</u>	<u>23,523,183</u>	<u>(21,285,863)</u>	<u>37,461,832</u>
Capital assets being depreciated:				
Buildings & building improvements	110,284,968	21,285,863	-	131,570,831
Equipment	8,053,198	356,233	(12,805)	8,396,626
Library collection	2,024,732	61,261	(20,205)	2,065,788
Total capital assets being depreciated	<u>120,362,898</u>	<u>21,703,357</u>	<u>(33,010)</u>	<u>142,033,245</u>
Less accumulated depreciation for:				
Buildings & building improvements	33,970,506	2,634,120	-	36,604,626
Equipment	4,098,582	548,049	(12,805)	4,633,826
Library collection	1,490,399	103,166	(20,205)	1,573,360
Total accumulated depreciation	<u>39,559,487</u>	<u>3,285,335</u>	<u>(33,010)</u>	<u>42,811,812</u>
Total capital assets being depreciated, net	<u>80,803,411</u>	<u>18,418,022</u>	<u>-</u>	<u>99,221,433</u>
Total capital assets, net	<u>\$ 116,027,923</u>	<u>\$ 41,941,205</u>	<u>\$ (21,285,863)</u>	<u>\$ 136,683,265</u>

4. Long-Term Debt

On November 4, 2014, Clackamas Community College district voters approved a \$90 million bond measure to make capital improvements to expand and update equipment and facilities.

On June 2, 2015, the College issued General Obligation Bonds, Series A in the amount of \$16,605,000 and deferred interest General Obligation Bonds, Series B in the amount of \$28,391,012 (\$51,385,000 final maturity amount).

On June 14, 2017, the College issued deferred interest convertible General Obligation Bonds, Series A in the amount of \$24,752,901 (\$51,209,750 final maturity amount) and General Obligation Bonds, Series B in the amount of \$20,245,000.

General Obligation Bonds are direct obligations and pledge the full faith and credit of the College. Funds provided by these debt issues are used for the acquisition and construction of major capital facilities.

CLACKAMAS COMMUNITY COLLEGE
NOTES TO BASIC FINANCIAL STATEMENTS
Year Ended June 30, 2019

4. Long-Term Debt (continued)

On February 14, 2004, the College issued \$15,695,000 of limited tax pension obligation bonds to finance its portion of the unfunded actuarial liability (UAL) with the Oregon Public Employees Retirement System (PERS) as of December 31, 2001. This issue was considered an advance refunding of the College's UAL and resulted in an estimated present value savings of approximately \$4 million over the life of the bonds based on a true interest cost of 5.48%.

On June 28, 2005, the College issued an additional \$14,620,000 of limited tax pension obligation bonds to finance its portion of the UAL with PERS as of December 31, 2003. This issue was also considered an advance refunding of the College's UAL and resulted in an estimated present value savings of approximately \$4.8 million over the life of the bonds based on a true interest cost of 4.80%. The actual savings or loss realized by the College over the life of the Pension Obligation Bonds cannot be determined because of uncertainty regarding the ultimate investment earnings of the advance refunding relative to the amount of interest expense that will be paid on the bonds, the various legislative changes to PERS, and legal issues pending with PERS which could impact the College's future required contribution rate.

Changes in Long-Term Debt

The College previously had a full-faith & credit obligation bonds from 2009 that were eligible to be called in and paid-in-full effective June 1, 2019. The College chose to pay the remaining \$1,050,000 principal balance off on that date and has no remaining debt obligation for those bonds.

The following shows long-term debt activity during the year. Interest rates were fixed at issuance; the rate range shows coupon rates on individual bonds and certificates. The interest paid column shows interest matured and paid during the year, a requirement of Oregon Administrative Regulation 162-010-0160. There was no matured interest due at July 1, 2018 or June 30, 2019.

CLACKAMAS COMMUNITY COLLEGE
NOTES TO BASIC FINANCIAL STATEMENTS
Year Ended June 30, 2019

4. Long-Term Debt (Continued)

	Original Amount	Interest Rates	Principal			Balance June 30, 2019	Due Within One Year	Interest Paid
			Balance July 1, 2018	Additions	Payments			
General obligation bonds:								
2007 refunding of 2001	31,850,000	4.00-5.00%	\$ 9,510,000	\$ -	\$ 4,565,000	\$ 4,945,000	\$ 4,945,000	\$ 475,500
2015A	16,605,000	2.00-5.00%	15,505,000	-	-	15,505,000	-	640,100
2015B (Note A)	28,391,012	2.38-4.60%	31,885,639	1,246,736	-	33,132,375	-	-
2017A (Note B)	24,752,901	5.00%	26,009,825	1,316,641	-	27,326,466	-	-
2017B	20,245,000	2.00-5.00%	20,245,000	-	75,000	20,170,000	150,000	987,150
Principal amount			103,155,464	2,563,377	4,640,000	101,078,841	5,095,000	2,102,750
Plus unamortized premium			9,413,926	-	711,821	8,702,105	-	-
Total GO bonds			112,569,390	2,563,377	5,351,821	109,780,946	5,095,000	2,102,750
Pension bonds:								
2004	15,695,000	3.35-5.50%	12,145,000	-	750,000	11,395,000	855,000	667,245
2005	14,620,000	4.64-4.83%	10,915,000	-	720,000	10,195,000	805,000	524,437
Principal amount			23,060,000	-	1,470,000	21,590,000	1,660,000	1,191,682
Less unamortized discount			(78,205)	7,819	-	(70,386)	-	-
Total pension bonds			22,981,795	7,819	1,470,000	21,519,614	1,660,000	1,191,682
Full faith & credit obligations:								
2009 refunding 1998 COPs	2,770,000	3.00-4.00%	1,180,000	-	1,180,000	-	-	47,200
Plus unamortized premium			67,805	-	67,805	-	-	-
Total FFCOs			1,247,805	-	1,247,805	-	-	47,200
Compensated absences			1,246,315	1,485,961	1,413,306	1,318,970	1,318,970	-
Obligations for postemployment healthcare benefits			9,464,055	2,159,076	-	11,623,131	-	-
Pension transition liability			3,963,732	-	156,921	3,806,811	-	-
Net pension liability			28,317,139	4,029,637	-	32,346,776	-	-
Total noncurrent liabilities			\$ 179,790,231	\$ 10,245,870	\$ 9,639,853	\$ 180,396,248	\$ 8,073,970	\$ 3,341,632

Notes

- A Additions to general obligation bonds include accreted interest of \$1,246,736
B Amount to general obligation bond 2017A includes accreted interest of \$1,316,641

CLACKAMAS COMMUNITY COLLEGE
NOTES TO BASIC FINANCIAL STATEMENTS
Year Ended June 30, 2019

4. Long-Term Debt (Continued)

Future maturities of long-term debt are as follows.

Year Ending June 30	General Obligation Bonds									
	2007 Refunding of 2001		2015A		2015B		2017A		2017B	
	Principal	Interest	Principal	Interest	Principal	Interest	Principal	Interest	Principal	Interest
2020	\$ 4,945,000	\$ 247,250	\$ -	\$ 640,100	\$ -	\$ -	\$ -	\$ -	\$ 150,000	\$ 985,650
2021	-	-	-	640,100	2,937,642	142,358	1,185,004	1,495,496	-	981,150
2022	-	-	-	640,100	2,964,240	240,760	1,351,570	1,441,680	-	981,150
2023	-	-	-	640,100	2,973,590	356,410	1,518,137	1,379,113	-	981,150
2024	-	-	3,455,000	640,100	-	-	1,698,981	1,308,519	-	981,150
2025	-	-	3,750,000	477,350	-	-	-	1,133,250	1,985,000	981,150
2026	-	-	4,010,000	354,850	-	-	-	1,133,250	-	901,750
2027	-	-	4,290,000	214,500	-	-	-	1,133,250	45,000	901,750
2028	-	-	-	-	3,253,473	1,401,527	-	1,133,250	95,000	899,500
2029	-	-	-	-	3,195,805	1,609,195	-	1,133,250	155,000	894,750
2030	-	-	-	-	3,129,539	1,835,461	-	1,133,250	210,000	887,000
2031	-	-	-	-	3,065,058	2,059,942	-	1,133,250	280,000	876,500
2032	-	-	-	-	2,996,573	2,293,427	-	1,133,250	350,000	862,500
2033	-	-	-	-	2,934,978	2,530,022	-	1,133,250	425,000	845,000
2034	-	-	-	-	2,867,827	2,772,173	-	1,133,250	505,000	823,750
2035	-	-	-	-	2,813,650	3,011,350	-	1,133,250	590,000	798,500
2036	-	-	-	-	-	-	-	1,133,250	6,395,000	769,000
2037	-	-	-	-	-	-	-	1,133,250	6,965,000	449,250
2038	-	-	-	-	-	-	5,282,546	1,400,704	2,020,000	101,000
2039	-	-	-	-	-	-	7,819,119	1,251,631	-	-
2040	-	-	-	-	-	-	8,471,109	873,891	-	-
Total	\$ 4,945,000	\$ 247,250	\$ 15,505,000	\$ 4,247,200	\$ 33,132,375	\$ 18,252,625	\$ 27,326,466	\$ 23,883,284	\$ 20,170,000	\$ 15,901,650

CLACKAMAS COMMUNITY COLLEGE
NOTES TO BASIC FINANCIAL STATEMENTS
Year Ended June 30, 2019

4. Long-Term Debt (Continued)

Year Ending June 30	Pension Bonds			
	2004		2005	
	Principal	Interest	Principal	Interest
2020	\$ 855,000	\$ 626,445	\$ 805,000	\$ 491,007
2021	965,000	579,933	895,000	453,631
2022	1,080,000	527,436	990,000	410,393
2023	1,210,000	468,685	1,095,000	362,567
2024	1,345,000	402,860	1,205,000	309,667
2025	1,495,000	328,482	1,325,000	251,454
2026	1,655,000	245,808	1,450,000	187,443
2027	1,825,000	154,287	1,590,000	117,393
2028	965,000	53,364	840,000	40,580
Total	<u>\$ 11,395,000</u>	<u>\$ 3,387,300</u>	<u>\$ 10,195,000</u>	<u>\$ 2,624,135</u>

CLACKAMAS COMMUNITY COLLEGE
NOTES TO BASIC FINANCIAL STATEMENTS
Year Ended June 30, 2019

5. Risk Management

The College is exposed to various risks of loss related to torts; theft of, damage to, and destruction of assets; errors and omissions; and natural disasters for which the College carries commercial insurance. Insurance coverage is reviewed by the College each year, and there have been no reductions in insurance coverage from the prior year. After customary deductibles, there have been no settlements paid by the College in excess of amounts covered by insurance for the last three years.

6. Pension Plans

Public Employees Retirement System

Plan Description

The College contributes to two pension plans administered by the Oregon Public Employees Retirement System (PERS). The Oregon Public Employees Retirement Fund (OPERF) applies to the College's contribution for qualifying employees who were hired before August 29, 2003, and is a cost-sharing multiple-employer defined benefit pension plan. The Oregon Public Service Retirement Plan (OPSRP) is a hybrid successor plan to the OPERF and consists of two programs: 1) The Pension Program, the defined benefit portion of the plan which applies to qualifying College employees hired on or after August 29, 2003. Benefits are calculated by a formula for members who attain normal retirement age. The formula takes into account final average salary and years of service. 2) The Individual Account Program (IAP), the defined contribution portion of the plan. Beginning January 1, 2004, all PERS member contributions go into the IAP. PERS members retain their existing PERS accounts, but any future member contributions are deposited into the member's IAP, not the member's PERS account.

Both PERS plans provide retirement and disability benefits, postemployment healthcare benefits, annual cost-of-living adjustments, and death benefits to plan members and beneficiaries. PERS is administered under Oregon Revised Statute Chapter 238, which establishes the Public Employees Retirement Board as the governing body of PERS. PERS issues a publicly available financial report that includes financial statements and required supplementary information. The report may be obtained at: <https://www.oregon.gov/pers/Pages/Financials/Actuarial-Financial-Information.aspx>.

Benefits provided

A. Tier One/Tier Two Retirement Benefit ORS Chapter 238

Pension Benefits

The PERS retirement allowance is payable monthly for life. It may be selected from 13 retirement benefit options. These options include survivorship benefits and lump-sum refunds. The basic benefit is based on years of service and final average salary. A percentage (1.67 percent for general service employees) is multiplied by the number of years of service and the final average salary. Benefits may also be calculated under either a formula plus annuity (for members who were contributing before August 21, 1981) or a money match computation if a greater benefit results.

A member is considered vested and will be eligible at minimum retirement age for a service retirement allowance if he or she has had a contribution in each of five calendar years or has reached at least 50 years of age before ceasing employment with a participating employer. General service employees may retire after reaching age 55. Tier One general service employee benefits are reduced if retirement occurs prior to age 58 with fewer than 30 years of service. Tier Two members are eligible for full benefits at age 60. The ORS Chapter 238 Defined Benefit Pension Plan is closed to new members hired on or after August 29, 2003.

CLACKAMAS COMMUNITY COLLEGE
NOTES TO BASIC FINANCIAL STATEMENTS
Year Ended June 30, 2019

6. Pension Plans (Continued)

Public Employees Retirement System (continued)

Death Benefits

Upon the death of a non-retired member, the beneficiary receives a lump-sum refund of the member's account balance (accumulated contributions and interest). In addition, the beneficiary will receive a lump-sum payment from employer funds equal to the account balance, provided one or more of the following conditions are met:

- the member was employed by a PERS employer at the time of death,
- the member died within 120 days after termination of PERS-covered employment,
- the member died as a result of injury sustained while employed in a PERS-covered job, or
- the member was on an official leave of absence from a PERS-covered job at the time of death.

Disability Benefits

A member with 10 or more years of creditable service who becomes disabled from other than duty-connected causes may receive a non-duty disability benefit. A disability resulting from a job-incurred injury or illness qualifies a member for disability benefits regardless of the length of PERS-covered service. Upon qualifying for either a non-duty or duty disability, service time is computed to age 58 when determining the monthly benefit.

Benefit Changes After Retirement

Members may choose to continue participation in a variable equities investment account after retiring and may experience annual benefit fluctuations due to changes in the market value of equity investments.

Under ORS 238.360 monthly benefits are adjusted annually through cost-of-living changes (COLA). The COLA is capped at 2.0 percent.

B. OPSRP Pension Program (OPSRP DB)

Pension Benefits

The Pension Program (ORS Chapter 238A) provides benefits to members hired on or after August 29, 2003. This portion of OPSRP provides a life pension funded by employer contributions. Benefits are calculated with the following formula for members who attain normal retirement age:

General service: 1.5 percent is multiplied by the number of years of service and the final average salary. Normal retirement age for general service members is age 65, or age 58 with 30 years of retirement credit.

A member of the OPSRP Pension Program becomes vested on the earliest of the following dates: the date the member completes 600 hours of service in each of five calendar years, the date the member reaches normal retirement age, and, if the pension program is terminated, the date on which termination becomes effective.

CLACKAMAS COMMUNITY COLLEGE
NOTES TO BASIC FINANCIAL STATEMENTS
Year Ended June 30, 2019

6. Pension Plans (continued)

Public Employees Retirement System (continued)

Death Benefits

Upon the death of a non-retired member, the spouse or other person who is constitutionally required to be treated in the same manner as the spouse, receives for life 50 percent of the pension that would otherwise have been paid to the deceased member.

Disability Benefits

A member who has accrued 10 or more years of retirement credits before the member becomes disabled or a member who becomes disabled due to job-related injury shall receive a disability benefit of 45 percent of the member's salary determined as of the last full month of employment before the disability occurred.

Benefit Changes After Retirement

Under ORS 238A.210 monthly benefits are adjusted annually through cost-of-living changes (COLA). The COLA is capped at 2.0 percent.

C. OPSRP Individual Account Program (OPSRP IAP)

Pension Benefits

An IAP member becomes vested on the date the employee account is established or on the date the rollover account was established. If the employer makes optional employer contributions for a member, the member becomes vested on the earliest of the following dates: the date the member completes 600 hours of service in each of five calendar years, the date the member reaches normal retirement age, the date the IAP is terminated, the date the active member becomes disabled, or the date the active member dies.

Upon retirement, a member of the OPSRP Individual Account Program (IAP) may receive the amounts in his or her employee account, rollover account, and vested employer account as a lump-sum payment or in equal installments over a 5-, 10-, 15-, 20-year period or an anticipated life span option. Each distribution option has a \$200 minimum distribution limit.

Death Benefits

Upon the death of a non-retired member, the beneficiary receives in a lump sum the member's account balance, rollover account balance, and vested employer optional contribution account balance. If a retired member dies before the installment payments are completed, the beneficiary may receive the remaining installment payments or choose a lump-sum payment.

Recordkeeping

PERS contracts with VOYA Financial to maintain IAP participant records.

CLACKAMAS COMMUNITY COLLEGE
NOTES TO BASIC FINANCIAL STATEMENTS
Year Ended June 30, 2019

6. Pension Plans (continued)

Public Employees Retirement System (continued)

Contributions

PERS funding policy provides for monthly employer contributions at actuarially determined rates. These contributions, expressed as a percentage of covered payroll, are intended to accumulate sufficient assets to pay benefits when due. This funding policy applies to the PERS Defined Benefit Plan and the Other Postemployment Benefit Plans. Employer contribution rates during the period were based on the December 31, 2015 actuarial valuation. The rates based on a percentage of payroll, first became effective July 1, 2017. Employer contributions for the year ended June 30, 2019 were \$2,763,315, excluding amounts to fund employer specific liabilities. The rates in effect for the fiscal year ended June 30, 2019 were 13.99 percent for Tier One/Tier Two General Service Members and 7.48 percent for OPSRP Pension Program General Service Members, net of 9.60 percent of side account rate relief. An additional 6 percent contribution is required for the OPSRP Individual Account Program.

Pension Liabilities, Pension Expenses, and Deferred Outflows of Resources and Deferred Inflows of Resources related to Pensions

At June 30, 2019, the College reported a liability of \$31,233,259 for its proportionate share of the net pension liability. The net pension liability was measured as of June 30, 2018 and the total pension liability used to calculate the net pension liability was determined by an actuarial valuation as of December 31, 2016 rolled forward to June 30, 2018. The College's proportion of the net pension liability was based on a projection of the College's long-term share of contributions to the pension plan relative to the projected contributions of all participating entities actuarially determined. PERS has established side accounts for employers that made lump sum payments to the plan in excess of their actuarially required contributions. Since different contribution rates are assessed to employers based on the value of the side accounts, the side account values were reflected separately in the proportionate share calculation. On June 30, 2018, the College's proportion was 0.25800466%.

For the year ended June 30, 2019, the College recognized pension expense of approximately \$5.9 million. At June 30, 2019, the College reported deferred outflows of resources and deferred inflows of resources related to pensions from the following sources:

	Deferred Outflows of Resources	Deferred Inflows of Resources
Differences between expected and actual experience	\$ 1,329,529	\$ -
Changes in assumptions	9,087,027	-
Net difference between projected and actual earnings on investments	-	1,735,564
Changes in proportionate share	344,620	902,444
Changes in proportion and differences between employer contributions and proportionate share of contributions	-	2,300,032
College's contributions subsequent to the measurement date	2,763,315	-
Deferred outflows/inflows at June 30, 2019	\$ 13,524,491	\$ 4,938,040

CLACKAMAS COMMUNITY COLLEGE
NOTES TO BASIC FINANCIAL STATEMENTS
Year Ended June 30, 2019

6. Pension Plans (continued)

Public Employees Retirement System (continued)

Contributions subsequent to the measurement date of \$2,763,315 reported as deferred outflows of resources will be recognized as a reduction of the net pension liability in the year ended June 30, 2020. Other deferred outflows of resources totaling \$10,761,176 less deferred inflows of resources of \$4,938,040 related to pensions will be recognized in pension expense as follows:

Year Ending June 30	Amount
2020	\$ 3,620,576
2021	2,696,722
2022	(851,892)
2023	176,441
2024	181,289
Total	\$ 5,823,136

Actuarial assumptions

The employer contribution rates effective July 1, 2017, through June 30, 2019, were set using the entry age normal actuarial cost method. For the Tier One/Tier Two component of the PERS Defined Benefit Plan, this method produced an employer contribution rate consisting of (1) an amount for normal cost (the estimated amount necessary to finance benefits earned by the employees during the current service year), (2) an amount for the amortization of unfunded actuarial accrued liabilities, which are being amortized over a fixed period with new unfunded actuarial accrued liabilities being amortized over 20 years. For the OPSRP Pension Program component of the PERS Defined Benefit Plan, this method produced an employer contribution rate consisting of (a) an amount for normal cost (the estimated amount necessary to finance benefits earned by the employees during the current service year), (b) an amount for the amortization of unfunded actuarial accrued liabilities, which are being amortized over a fixed period with new unfunded actuarial accrued liabilities being amortized over 16 years.

CLACKAMAS COMMUNITY COLLEGE
 NOTES TO BASIC FINANCIAL STATEMENTS
 Year Ended June 30, 2019

6. Pension Plans (continued)

Public Employees Retirement System (continued)

The total pension liability in the December 31, 2016 actuarial valuation was determined using the following actuarial assumptions:

Valuation date	December 31, 2016 rolled forward to June 30, 2018
Experience study report	2016, published July 2017
Actuarial cost method	Entry age normal
Amortization method	Amortized as a level percentage of payroll as layered amortization bases over a closed period. Tier One / Tier Two UAL is amortized over 20 years and OPSRP pension UAL is amortized over 16 years. RHIA/RHIPA is amortized over 10 years.
Asset valuation method	Fair value of assets
Actuarial assumptions:	
Inflation rate	2.50 percent
Investment rate of return	7.20 percent
Discount rate	7.20 percent
Projected salary increases	3.50 percent overall payroll growth
Cost of Living Adjustments (COLA)	Blend of 2.00% COLA and graded COLA (1.25%/0.15%) in accordance with <i>Moro</i> decision; blend based on service.
Mortality	<p>Health retirees and beneficiaries: RP-2014 Healthy annuitant, sex-distinct, generational with Unisex, Social Security Data Scale, with collar adjustments and set-backs as described in the valuation.</p> <p>Active members: RP-2014 Employees, sex-distinct, generational with Unisex, Social Security Data Scale, with collar adjustments and set-backs as described in the valuation.</p> <p>Disabled retirees: RP-2014 Disabled retirees, sex-distinct, generational with Unisex, Social Security Data Scale.</p>

Actuarial valuations of an ongoing plan involve estimates of the value of projected benefits and assumptions about the probability of events far into the future. Actuarially determined amounts are subject to continual revision as actual results are compared to past expectations and new estimates are made about the future. Experience studies are performed as of December 31 of even numbered years. The methods and assumptions shown above are based on the 2016 Experience Study which reviewed experience for the four-year period ending on December 31, 2016.

Long-term expected rate of return

To develop an analytical basis for the selection of the long-term expected rate of return assumption, in July 2017 the PERS Board reviewed long-term assumptions developed by both Milliman's capital market assumptions team and the Oregon Investment Council's (OIC) investment advisors. The table below shows Milliman's assumptions for each of the asset classes in which the plan was invested at that time based on the OIC long-term target asset allocation. The OIC's description of each asset class was used to map the target allocation to the asset classes shown below. Each asset class assumption is based on a consistent set of underlying assumptions, and includes adjustment for the inflation assumption. These assumptions are not based on historical returns, but instead are based on a forward-looking capital market economic model.

CLACKAMAS COMMUNITY COLLEGE
NOTES TO BASIC FINANCIAL STATEMENTS
Year Ended June 30, 2019

6. Pension Plans (continued)

Public Employees Retirement System (continued)

<u>Asset Class</u>	<u>Target Allocation</u>	<u>Compounded Annual Return (Geometric)</u>
Core Fixed Income	8.00%	3.49%
Short-Term Bonds	8.00%	3.38%
Bank/Leveraged Loans	3.00%	5.09%
High Yield Bonds	1.00%	6.45%
Large/Mid Cap US Equities	15.75%	6.30%
Small Cap US Equities	1.31%	6.69%
Micro Cap US Equities	1.31%	6.80%
Developed Foreign Equities	13.13%	6.71%
Emerging Market Equities	4.12%	7.45%
Non-US Small Cap Equities	1.88%	7.01%
Private Equities	17.50%	7.82%
Real Estate (Property)	10.00%	5.51%
Real Estate (REITS)	2.50%	6.37%
Hedge Fund of Funds - Diversified	2.50%	4.09%
Hedge Fund - Event Driven	0.63%	5.86%
Timber	1.88%	5.62%
Farmland	1.88%	6.15%
Infrastructure	3.75%	6.60%
Commodities	1.88%	3.84%
Total	<u>100.00%</u>	

Assumed inflation - mean 2.50%

Discount rate

The discount rate used to measure the total pension liability was 7.20 percent for the Defined Benefit Pension Plan. The projection of cash flows used to determine the discount rate assumed that contributions from plan members and those of the contributing employers are made at the contractually required rates, as actuarially determined. Based on those assumptions, the pension plan's fiduciary net position was projected to be available to make all projected future benefit payments of current plan members. Therefore, the long-term expected rate of return on pension plan investments for the Defined Benefit Pension Plan was applied to all periods of projected benefit payments to determine the total pension liability.

CLACKAMAS COMMUNITY COLLEGE
 NOTES TO BASIC FINANCIAL STATEMENTS
 Year Ended June 30, 2019

6. Pension Plans (continued)

Public Employees Retirement System (continued)

Sensitivity of the College's proportionate share of the net pension liability to changes in the discount rate

The following presents the College's proportionate share of the net pension liability calculated using the discount rate of 7.20%, as well as what the College's proportionate share of the net pension liability would be if it were calculated using a discount rate that is 1-percentage-point lower (6.20%) or 1-percentage-point higher (8.20%) than the current rate:

	1% Decrease 6.20%	Discount Rate 7.20%	1% Increase 8.20%
College's proportionate share of the net pension liability	\$ 57,466,184	\$ 31,233,259	\$ 9,580,004

Changes of assumptions

The Public Employees Retirement Board lowered the discount rate and the assumed investment rate of return from 7.5% to 7.2% effective January 1, 2018.

Pension plan fiduciary net position

Detailed information about the pension plan's fiduciary net position is available in the separately issued PERS financial report.

Transition Liability

The College reports a separate liability to the plan with a balance of \$3,806,811 at June 30, 2019. The liability represents the College's allocated share of the pre-SLGRP pooled liability. The College is being assessed an employer contribution rate of 1.76 percent of covered payroll for payment of this transition liability.

Early Retirement Plan:

Plan Description

The College maintains a single-employer defined benefit early retirement supplement plan. The plan covers exempt, full time classified, and full time faculty employees who were hired prior to July 1, 2011, have completed twelve consecutive years of service with the College just prior to retirement, are not yet 65 years of age, and elect the option of early retirement. The College pays a monthly stipend for eligible retirees, which ceases after a maximum of 48 months or when the retiree reaches age 62. The stipend amount is fixed given the employee's hire date and salary grade at retirement. The College Board of Education authorizes the plan and may change the benefits, in conjunction with collective bargaining. The College does not issue a stand-alone report for this plan.

CLACKAMAS COMMUNITY COLLEGE
NOTES TO BASIC FINANCIAL STATEMENTS
Year Ended June 30, 2019

6. Pension Plans (continued)

Early Retirement Plan (continued)

Employees covered by benefit terms

The following employees were covered by the benefit terms:

	Classified	Confidential	Exempt	Faculty	Total
Active employees	195	10	46	133	384
Inactive employees	23	2	10	24	59
Total	218	12	56	157	443

Contributions and Funding

The plan is currently unfunded as defined by current GASB standards. There are no assets accumulated in a trust that meets the criteria in paragraph 4 of GASB 73. The benefits from this program are fully paid by the College and, consequently, no contributions by employees are required. Benefits are paid when due. There are no administrative costs attributable to the plan and the plan's activities are reported in the financial statements. For the year ended June 30, 2019, changes in the pension liability are as follows:

Total pension liability - July 1, 2018	\$ 799,935
Service cost	30,060
Interest on total pension liability	28,252
Changes in benefit terms	175,355
Differences between expected and actual experience	336,264
Changes of assumptions or other input	(103,126)
Benefit payments	(153,223)
Total pension liability - June 30, 2019	<u>\$ 1,113,517</u>

For the year ended June 30, 2019, the College recognized pension expense of \$291,951. At June 30, 2019, the College reported deferred outflows of resources and deferred inflows of resources related to pensions from the following sources:

	Deferred Outflows of Resources	Deferred Inflows of Resources
Differences between expected and actual experience	\$ 252,198	\$ -
Changes in assumptions	-	77,344
Deferred outflows/inflows at June 30, 2019	<u>\$ 252,198</u>	<u>\$ 77,344</u>

Amounts reported as deferred outflows of resources and deferred inflows of resources related to pensions will be recognized in pension expense as follows:

Year Ending June 30	Amount
2020	\$ 58,284
2021	58,284
2022	58,286
2023	-
2024	-
Total	<u>\$ 174,854</u>

CLACKAMAS COMMUNITY COLLEGE
 NOTES TO BASIC FINANCIAL STATEMENTS
 Year Ended June 30, 2019

6. Pension Plans (continued)

Actuarial Valuation

The actuarial information is from a valuation dated July 1, 2018 rolled forward to June 30, 2019. The actuarial funding method used to determine the plan cost is the entry age normal cost method. Under this method, the actuarial present value of the projected benefits of each active employee included in the valuation is allocated on a level percentage of pay basis over the service of the active employee between assumed entry age (date of hire) and assumed exit age(s). The portion of this actuarial present value allocated to the valuation year is called the normal cost for that active employee. The sum of these individual normal costs is the plan's normal cost for the valuation year. The actuarial assumptions included (a) a discount rate of 3.5%, (b) an assumed inflation rate of 2.5% for all future years, and (c) 3.5% salary increases per annum for all employees.

Sensitivity of the Total Pension Liability to Changes in the Discount Rate

The following presents the total pension liability calculated using the discount rate of 3.5%, as well as what the total pension liability would be if it were calculated using a discount rate that is 1-percentage-point lower (2.5%) or 1-percentage-point higher (4.5%) than the current rate:

	1% Decrease 2.5%	Discount Rate 3.5%	1% Increase 4.5%
Total Pension Liability - 6/30/2019	\$ 1,154,140	\$ 1,113,517	\$ 1,072,565

Changes of assumptions

In the latest actuarial valuation used to determine the total pension liability as of June 30, 2019, the discount rate was reduced from 3.75% to 3.5% and the projected salary increases per annum was increased from 2.5% to 3.5%.

CLACKAMAS COMMUNITY COLLEGE
NOTES TO BASIC FINANCIAL STATEMENTS
Year Ended June 30, 2019

7. Postemployment Healthcare Benefits

Public Employees Retirement System

Plan Description

The College contributes to an OPEB plan administered by the Oregon Public Employees Retirement System (PERS). The Retiree Health Insurance Account (RHIA) is a cost-sharing multiple-employer defined benefit plan established under Oregon Revised Statute 238.420, which grants the authority to manage the plan to the Public Employees Retirement Board as the governing body of PERS. PERS issues a publicly available financial report that includes financial statements and required supplementary information. The report may be obtained at <https://www.oregon.gov/pers/Pages/Financials/Actuarial-Financial-Information.aspx>.

Benefits Provided

Eligible PERS members can receive a payment of up to \$60 from RHIA toward the monthly cost of health insurance. To be eligible to receive this monthly payment toward the premium cost the member must: (1) have eight years or more of qualifying service in PERS at the time of retirement or receive a disability allowance as if the member had eight years or more of creditable service in PERS, (2) receive both Medicare Parts A and B coverage, and (3) enroll in a PERS-sponsored health plan. A surviving spouse or dependent of a deceased PERS retiree who was eligible to receive the subsidy is eligible to receive the subsidy if he or she (1) is receiving a retirement benefit or allowance from PERS or (2) was insured at the time the member died and the member retired before May 1, 1991. The plan was closed to new entrants hired on or after August 29, 2003.

Contributions

PERS funding policy provides for monthly employer contributions at an actuarially determined rate. These contributions, expressed as a percentage of covered payroll, are intended to accumulate sufficient assets to pay benefits when due. Employer contribution rates during the period were based on the December 31, 2015 actuarial valuation. The rates based on a percentage of payroll, first became effective July 1, 2017. Employer contributions for the year ended June 30, 2019 were \$144,137. The rates in effect for the fiscal year ended June 30, 2019 were 0.50 percent for Tier One/Tier Two General Service Members and 0.43 percent for OPSRP Pension Program General Service Members. Employees are not required to contribute to the RHIA Program.

OPEB Assets, Liabilities, OPEB Expenses, and Deferred Outflows of Resources and Deferred Inflows of Resources related to OPEB

At June 30, 2019, the College reported an asset of \$318,741 for its proportionate share of the net OPEB asset. The net OPEB asset was measured as of June 30, 2018 and the total OPEB asset used to calculate the net OPEB asset was determined by an actuarial valuation as of December 31, 2016 rolled forward to June 30, 2018. The College's proportion of the net OPEB asset was based on a projection of the College's long-term share of contributions to the OPEB plan relative to the projected contributions of all participating entities actuarially determined. On June 30, 2018, the College's proportion was 0.28554103%.

For the year ended June 30, 2019, the College recognized OPEB expense of approximately (\$29) thousand. At June 30, 2019, the College reported deferred outflows of resources and deferred inflows of resources related to OPEB from the following sources:

CLACKAMAS COMMUNITY COLLEGE
NOTES TO BASIC FINANCIAL STATEMENTS
Year Ended June 30, 2019

7. Postemployment Healthcare Benefits (continued)

Public Employees Retirement System (continued)

	Deferred Outflows of Resources	Deferred Inflows of Resources
Differences between expected and actual experience	\$ -	\$ 18,064
Changes in assumptions	-	1,011
Net difference between projected and actual earnings on investments	-	68,720
Changes in proportionate share	12	1,559
Contributions subsequent to the measurement date	144,137	-
Deferred outflows/inflows at June 30, 2019	\$ 144,149	\$ 89,354

Contributions subsequent to the measurement date of \$144,137 reported as deferred outflows of resources will be recognized as a reduction of the net OPEB liability in the year ended June 30, 2020. Other deferred outflows of resources totaling \$12 less deferred inflows of resources of \$89,354 related to OPEB will be recognized in OPEB expense as follows:

Year Ending June 30	Amount
2020	\$ (29,595)
2021	(29,595)
2022	(23,321)
2023	(6,831)
2024	-
Total	\$ (89,342)

Actuarial assumptions

The employer contribution rates effective July 1, 2017, through June 30, 2019, were set using the entry age normal actuarial cost method. This method produced an employer contribution rate consisting of (1) an amount for normal cost (the estimated amount necessary to finance benefits earned by the employees during the current service year), (2) an amount for the amortization of unfunded actuarial accrued liabilities, which are being amortized over a fixed period with new unfunded actuarial accrued liabilities being amortized over 10 years.

The total OPEB asset in the December 31, 2016 actuarial valuation was determined using the following actuarial assumptions:

CLACKAMAS COMMUNITY COLLEGE
NOTES TO BASIC FINANCIAL STATEMENTS
Year Ended June 30, 2019

7. Postemployment Healthcare Benefits (continued)

Public Employees Retirement System (continued)

Valuation Date	December 31, 2016 rolled forward to June 30, 2018
Experience Study Report	2016, published July 2017
Actuarial Cost Method	Entry age normal
Amortization Method	Amortized as a level percentage of payroll as layered amortization bases over a closed 10-year period
Asset Valuation Method	Fair value of assets
Actuarial Assumptions:	
Inflation Rate	2.50 percent
Investment Rate of Return	7.20 percent
Discount Rate	7.20 percent
Projected Salary Increases	3.50 percent overall payroll growth
Retiree Healthcare Participation	Healthy retirees 35%; Disabled retirees 20%
Healthcare Cost Trend Rate	Not applicable
Mortality	<p>Health retirees and beneficiaries: RP-2014 Healthy annuitant, sex-distinct, generational with Unisex, Social Security Data Scale, with collar adjustments and set-backs as described in the valuation.</p> <p>Active members: RP-2014 Employees, sex-distinct, generational with Unisex, Social Security Data Scale, with collar adjustments and set-backs as described in the valuation.</p> <p>Disabled retirees: RP-2014 Disabled retirees, sex-distinct, generational with Unisex, Social Security Data Scale.</p>

Actuarial valuations of an ongoing plan involve estimates of the value of projected benefits and assumptions about the probability of events far into the future. Actuarially determined amounts are subject to continual revision as actual results are compared to past expectations and new estimates are made about the future. Experience studies are performed as of December 31 of even numbered years. The methods and assumptions shown above are based on the 2016 Experience Study which reviewed experience for the four-year period ending on December 31, 2016.

Long-term expected rate of return

To develop an analytical basis for the selection of the long-term expected rate of return assumption, in July 2017 the PERS Board reviewed long-term assumptions developed by both Milliman's capital market assumptions team and the Oregon Investment Council's (OIC) investment advisors. The table below shows Milliman's assumptions for each of the asset classes in which the plan was invested at that time based on the OIC long-term target asset allocation. The OIC's description of each asset class was used to map the target allocation to the asset classes shown below. Each asset class assumption is based on a consistent set of underlying assumptions, and includes adjustment for the inflation assumption. These assumptions are not based on historical returns, but instead are based on a forward-looking capital market economic model.

CLACKAMAS COMMUNITY COLLEGE
NOTES TO BASIC FINANCIAL STATEMENTS
Year Ended June 30, 2019

7. Postemployment Healthcare Benefits (continued)

Public Employees Retirement System (continued)

<u>Asset Class</u>	<u>Target Allocation</u>	<u>Compounded Annual Return (Geometric)</u>
Core Fixed Income	8.00%	3.49%
Short-Term Bonds	8.00%	3.38%
Bank/Leveraged Loans	3.00%	5.09%
High Yield Bonds	1.00%	6.45%
Large/Mid Cap US Equities	15.75%	6.30%
Small Cap US Equities	1.31%	6.69%
Micro Cap US Equities	1.31%	6.80%
Developed Foreign Equities	13.13%	6.71%
Emerging Market Equities	4.12%	7.45%
Non-US Small Cap Equities	1.88%	7.01%
Private Equities	17.50%	7.82%
Real Estate (Property)	10.00%	5.51%
Real Estate (REITS)	2.50%	6.37%
Hedge Fund of Funds - Diversified	2.50%	4.09%
Hedge Fund - Event Driven	0.63%	5.86%
Timber	1.88%	5.62%
Farmland	1.88%	6.15%
Infrastructure	3.75%	6.60%
Commodities	1.88%	3.84%
Total	<u>100.00%</u>	

Assumed inflation - mean 2.50%

Discount rate

The discount rate used to measure the total OPEB asset was 7.20 percent for the OPEB plan. The projection of cash flows used to determine the discount rate assumed that contributions from plan members and those of the contributing employers are made at the contractually required rates, as actuarially determined. Based on those assumptions, the OPEB plan's fiduciary net position was projected to be available to make all projected future benefit payments of current plan members. Therefore, the long-term expected rate of return on OPEB plan investments for the OPEB plan was applied to all periods of projected benefit payments to determine the total OPEB asset.

Sensitivity of the College's proportionate share of the net OPEB asset to changes in the discount rate and healthcare cost trend rate

The following presents the College's proportionate share of the net OPEB asset calculated using the discount rate of 7.20%, as well as what the College's proportionate share of the net OPEB asset would be if it were calculated using a discount rate that is 1-percentage-point lower (6.20%) or 1-percentage-point higher (8.20%) than the current rate:

CLACKAMAS COMMUNITY COLLEGE
NOTES TO BASIC FINANCIAL STATEMENTS
Year Ended June 30, 2019

7. Postemployment Healthcare Benefits (continued)

Public Employees Retirement System (continued)

	1% Decrease 6.20%	Discount Rate 7.20%	1% Increase 8.20%
College's proportionate share of the net OPEB liability (asset)	\$ (185,587)	\$ (318,741)	\$ (432,082)

Since the monthly benefit is capped at \$60, the healthcare cost trend rate has no effect on the College's proportionate share of the net OPEB asset.

Changes of assumptions

The Public Employees Retirement Board lowered the discount rate and the assumed investment rate of return from 7.5% to 7.2% effective January 1, 2018.

OPEB plan fiduciary net position

Detailed information about the OPEB plan's fiduciary net position is available in the separately issued PERS financial report.

Early Retirement Plan

Plan Description

The College maintains a single-employer defined benefit postemployment healthcare benefits plan. For exempt, full time classified, and full time faculty employees who were hired prior to July 1, 2011, have completed twelve consecutive years of service with the College just prior to retirement, are not yet 65 years of age, and elect the option of early retirement, the College provides an explicit benefit consisting of a contribution of a set monthly amount toward health insurance premiums; the retiree pays any premium for their selected coverage which is in excess of the College contribution. The health insurance contribution ceases at age 65. Additionally, the College makes the same healthcare benefit plans offered to current employees available to retirees and their dependents (regardless of eligibility for the explicit benefits described above) until such time as the retirees are eligible for Medicare. Although the College does not pay any portion of the plan premiums for retirees not eligible for the explicit benefit, there is an implicit benefit because a) the greater claims associated with retirees are reflected in the plan rates and b) those who opt to be covered by the College plans pay lesser premiums than they would had they bought coverage elsewhere. The College Board of Education authorizes the plan and may change the benefits, in conjunction with collective bargaining. The College does not issue a stand-alone report for this plan.

Employees covered by benefit terms

The following employees were covered by the benefit terms:

	Classified	Confidential	Exempt	Faculty	Total
Active employees	195	10	46	133	384
Inactive employees	23	2	10	24	59
Total	218	12	56	157	443

CLACKAMAS COMMUNITY COLLEGE
NOTES TO BASIC FINANCIAL STATEMENTS
Year Ended June 30, 2019

7. Postemployment Healthcare Benefits (continued)

Early Retirement Plan (continued)

Contributions and Funding

The plan is currently unfunded as defined by current GASB standards. There are no assets accumulated in a trust that meets the criteria in paragraph 4 of GASB 75. The benefits from this program are fully paid by the College and consequently, no contributions by employees are required. Benefits are paid when due. There are no administrative costs attributable to the plan and the plan's activities are reported in the financial statements. For the year ended June 30, 2019, changes in the postemployment healthcare benefits liability are as follows:

Total OPEB liability - July 1, 2018	\$ 9,579,056
Service cost	333,675
Interest on total OPEB liability	356,592
Differences between expected and actual experience	2,905,068
Changes of assumptions or other input	(744,026)
Benefit payments	(807,234)
Total OPEB liability - June 30, 2019	<u>\$ 11,623,131</u>

For the year ended June 30, 2019, the College recognized postemployment healthcare benefits liability expense of \$998,988. At June 30, 2019, the College reported deferred outflows of resources and deferred inflows of resources related to OPEB from the following sources:

	<u>Deferred Outflows of Resources</u>	<u>Deferred Inflows of Resources</u>
Differences between expected and actual experience	\$ 2,490,058	\$ -
Changes in assumptions	-	637,737
Deferred outflows/inflows at June 30, 2019	<u>\$ 2,490,058</u>	<u>\$ 637,737</u>

Amounts reported as deferred outflows of resources and deferred inflows of resources related to OPEB will be recognized in OPEB expense as follows:

<u>Year Ending June 30</u>	<u>Amount</u>
2020	\$ 308,721
2021	308,721
2022	308,721
2023	308,721
2024	308,721
thereafter	308,716
Total	<u>\$ 1,852,321</u>

Actuarial Valuation

The actuarial information is from a valuation dated July 1, 2018 rolled forward to June 30, 2019. The actuarial funding method used to determine the plan cost is the entry age normal cost method. Under this method, the actuarial present value of the projected benefits of each active employee included in the valuation is allocated on a level percentage of pay basis over the service of the active employee between assumed entry age (date of hire) and assumed exit age(s). The portion of this actuarial present value

CLACKAMAS COMMUNITY COLLEGE
NOTES TO BASIC FINANCIAL STATEMENTS
Year Ended June 30, 2019

7. Postemployment Healthcare Benefits (continued)

Early Retirement Plan (continued)

allocated to the valuation year is called the normal cost for that active employee. The sum of these individual normal costs is the plan's normal cost for the valuation year. The actuarial assumptions included (a) a discount rate of 3.5%, (b) an assumed inflation rate of 2.5% for all future years, (c) 3.5% salary increases per annum for all employees, and (d) a healthcare cost trend rate of 6.5% graded down to 5.0%.

Sensitivity of the Total OPEB Liability to Changes in the Discount and Healthcare Cost Trend Rates

The following presents the total OPEB liability calculated using the discount rate of 3.5%, as well as what the total OPEB liability would be if it were calculated using a discount rate that is 1-percentage-point lower (2.5%) or 1-percentage-point higher (4.5%) than the current rate:

	1% Decrease 2.5%	Discount Rate 3.5%	1% Increase 4.5%
Total OPEB Liability - 6/30/2019	\$ 12,333,912	\$ 11,623,131	\$ 10,943,165

The following presents the total OPEB liability calculated using the healthcare cost trend rate of 6.50% graded down to 5.00%, as well as what the total OPEB liability would be if it were calculated using a healthcare cost trend rate that is 1-percentage-point lower (5.50% graded down to 4.00%) or 1-percentage-point higher (7.50% graded down to 6.00%) than the current rate:

	1% Decrease (5.50% Graded Down to 4.00%)	Healthcare Cost Trend Rate (6.50% Graded Down to 5.00%)	1% Increase (7.50% Graded Down to 6.00%)
Total OPEB Liability - 6/30/2019	\$ 10,660,410	\$ 11,623,131	\$ 12,709,061

Changes of assumptions

In the latest actuarial valuation used to determine the total OPEB liability as of June 30, 2019, the discount rate was reduced from 3.75% to 3.5% and the projected salary increases per annum was increased from 2.5% to 3.5%.

8. Contingencies

Grant revenue reflected in the financial statements is subject to audit and adjustment by grantor agencies, principally the federal government. Any costs which are questioned or recommended to be disallowed which ultimately result in disallowed claims may become a liability of the College.

Various claims are pending against the College. In the opinion of College management, after consultation with legal counsel, the potential loss on these claims will not materially affect the College's financial position.

9. Commitments

The College has approximately \$9.5 million in on-going construction commitments as of June 30, 2019. This total consists of construction contracts based on guaranteed maximum amounts with the two construction manager/general contractors currently working on construction and renovation projects at the Oregon City campus.

This page intentionally left blank.

CLACKAMAS COMMUNITY COLLEGE FOUNDATION
NOTES TO FINANCIAL STATEMENTS
Year Ended December 31, 2018

1. SUMMARY OF SIGNIFICANT ACCOUNTING POLICIES

Organization

Clackamas Community College Foundation (the Foundation) is a not-for-profit corporation which was organized with the mission of “friendraising and fundraising” for Clackamas Community College (the College). The Foundation raises and donates funds to assist the College in various program and facilities construction activities. The chief revenue sources for the Foundation are donor contributions and fundraising activities.

Basis of Accounting

The financial statements have been prepared on the accrual basis of accounting.

Basis of Financial Statement Presentation

The financial statement presentation follows the requirements of the Financial Accounting Standards Board (FASB) in FASB Accounting Standards Codification (ASC) 958, *Not-for-Profit Entities*. Under FASB ASC 958, the Foundation is required to report information regarding its financial position and activities according to the following net assets classifications:

Net assets without donor restrictions - Net assets that are not subject to donor-imposed restrictions and may be expended for any purpose in performing the primary objectives of the organization.

Net assets with donor restrictions - Net assets subject to stipulations imposed by donors. Some donor restrictions are temporary in nature; those restrictions will be met by actions of the Foundation or by the passage of time. Other donor restrictions are perpetual in nature, where by the donor has stipulated the funds be maintained in perpetuity.

Donor restricted contributions are reported as increases in net assets with donor restrictions. When a restriction expires, net assets are reclassified from net assets with donor restrictions to net assets without donor restrictions in the statement of activities.

Policy for Endowed Funds

The accounting procedure for endowed funds conforms to the Foundation’s policy for endowed funds. Endowment gifts (corpus) are recorded as donor-restricted funds to be maintained in perpetuity and investment earnings are recorded as funds which are temporarily restricted.

CLACKAMAS COMMUNITY COLLEGE FOUNDATION
NOTES TO FINANCIAL STATEMENTS
Year Ended December 31, 2018

1. SUMMARY OF SIGNIFICANT ACCOUNTING POLICIES (Contd)

Use of Estimates

The preparation of financial statements in conformity with accounting principles generally accepted in the United States of America requires management to make estimates and assumptions that affect the reported amounts of assets and liabilities and disclosure of contingent assets and liabilities at the date of the financial statements and the reported amounts of revenues and expenses during the reporting period. Actual results could differ from those estimates.

Investment Policy/Endowment Spending Policy

The Foundation has an “Investment Policy” for managing its investments and establishing its endowment spending policy.

Underlying the Foundation’s investment objectives for endowment funds is its desire to maintain the purchasing power of endowment income and the protection of the real value of endowment principal in perpetuity. The goal is to provide a stable source of perpetual financial support.

The investment objective for non-endowed/operating funds is to minimize risk of loss so that current operating resources are not subject to significant declines. The funds will be invested in the short-term investment portfolio that has preservation of capital and liquidity as the primary investment objectives.

The “Investment Policy” is intended to assist the Foundation in meeting its fiduciary obligations by effectively constructing, supervising, and evaluating the investment program established for the Foundation by:

1. Developing and managing the asset allocation(s) of the Foundation’s assets;
2. Measuring and assessing the Foundation’s investment portfolio performance; and
3. Matching liquidity needs of the Foundation with investment selections across the entire portfolio.

The Foundation follows an endowment spending policy that allows for up to seven percent (7.0%) based on the average of total assets over the prior twelve (12) quarters, valued as of December 31, each year. The Foundation used 5.5% as its spending guideline during 2018. On an annual basis, the Foundation Board of Directors may determine the allocation within the spending amount, deciding the percent to be used for the purpose specified by the endowments, as well as for any non-investment related administrative costs.

Oregon Revised Statutes 128.305 to 128.336 cited as the Uniform Prudent Management of Institutional Funds Act establishes requirements for the management and expenditure of endowment funds. The Foundation’s investment policy and spending policy related to its endowments is stated in its “Investment Policy.”

CLACKAMAS COMMUNITY COLLEGE FOUNDATION
NOTES TO FINANCIAL STATEMENTS
Year Ended December 31, 2018

1. SUMMARY OF SIGNIFICANT ACCOUNTING POLICIES (Contd)

Cash and Cash Equivalents

Cash and cash equivalents consist of cash in a financial institution and cash on hand.

Investments

Investments in marketable securities with readily determinable fair values and all investments in debt securities are reported at their fair values in the statement of financial position. Realized and unrealized gains and losses are reflected in the statement of activities. Investment income and gains restricted by a donor are reported as increases in donor-restricted net assets until the restrictions are met (either by the passage of time or by use).

Contributions

Contributions received are recorded as unrestricted or donor-restricted support depending on the existence and/or nature of any donor restrictions. Promises to give which are, in substance, unconditional are recorded as unrestricted or donor-restricted support at the time the promise is made.

All donor-restricted support is reported as an increase in donor-restricted net assets. When a restriction expires (that is, when a stipulated time restriction ends or purpose restriction is accomplished) restricted net assets are reclassified to unrestricted net assets and reported in the statement of activities as net assets released from restrictions.

Donated Services

The Foundation receives donated services from the College in the form of management and administrative personnel support. Revenues and expenses for these services are reflected in the statement of activities based on compensation and fringe benefits paid to College personnel. The College also provides facilities for the operation and administration of the Foundation's activities. The estimated fair value for the use of these facilities is not reflected in the financial statements.

Donated Materials

The Foundation receives donated materials which are then donated to the College for use in the College's instructional programs. These donations are recorded at their estimated fair value, and are reflected as revenues and expenses in the statement of activities.

CLACKAMAS COMMUNITY COLLEGE FOUNDATION
NOTES TO FINANCIAL STATEMENTS
Year Ended December 31, 2018

1. SUMMARY OF SIGNIFICANT ACCOUNTING POLICIES (Contd)

Deferred Revenue

Revenue that has been raised for future events is deferred and recognized in the period to which it relates.

Derivative Instruments

The Foundation, in consultation with its investment advisor, seeks an optimum mix of investments to produce flexibility and diversification in its portfolio. To that end, the Foundation includes hedge funds in its balanced portfolio with the goal of reducing portfolio risk and volatility and increasing portfolio returns.

The Foundation has investments in hedge funds which use derivative instruments including futures contracts, options contracts, interest rate swaps, credit default swaps, and forward foreign currency contracts. While these derivatives are generally used as economic hedges as part of the investment company's investment objectives, the derivatives may increase, decrease or change the level or types of exposure to certain risk factors like credit risk, interest rate risk and foreign currency risk. Because investment companies value their derivatives at fair value and recognize changes in fair value through the statement of operations, they do not qualify for hedge accounting under ASC topic 815.

Functional Allocation of Expenses

The costs of providing various programs and activities have been summarized on a functional basis in the statement of activities. Accordingly, certain costs have been allocated among the programs and supporting services benefited.

Income Taxes

The Foundation is a not-for-profit organization that is exempt from federal income taxes under Section 501(c)(3) of the Internal Revenue Code, and is exempt from Oregon excise taxes under applicable state law. The Foundation's tax returns for years prior to 2015 are generally no longer subject to examination by taxing authorities.

New Accounting Pronouncement

The Financial Accounting Standards Board issued ASU 2016-14, Not-for-Profit Entities (Topic 958) – *Presentation of Financial Statements of Not-for-Profit Entities*, to improve the current net asset classification requirements and the information presented in financial statements and notes about a not-for-profit entity's liquidity and financial performance. The Foundation implemented ASU 2016-14 during the year ended December 31, 2018.

CLACKAMAS COMMUNITY COLLEGE FOUNDATION
 NOTES TO FINANCIAL STATEMENTS
 Year Ended December 31, 2018

2. AVAILABILITY AND LIQUIDITY

Financial assets at December 31, 2018 available to meet general expenditures, that is, without donor restrictions limiting their use, within one year of the statement of financial position date, are comprised of the following:

Financial assets at year end:	
Cash and cash equivalents	\$ 384,170
Unconditional promises to give	80,315
Investments	<u>16,727,108</u>
 Total financial assets	 <u>17,191,593</u>
Less donor-restricted amounts not available for general expenditures within one year:	
Endowment funds restricted in perpetuity	13,097,161
Endowment accounts restricted for scholarships and program activities net of \$42,299 available for administrative costs	1,531,372
Non-endowment accounts restricted for scholarships and program activities	<u>1,723,214</u>
 Total donor-restricted amounts	 <u>16,351,747</u>
 Financial assets available to meet general expenditures over the next year	 <u><u>\$ 839,846</u></u>

Endowment funds consist of donor-restricted endowments. Donor-restricted endowment funds received are restricted in perpetuity and are not available for general expenditures. Investment earnings from donor-restricted endowments are restricted for specific purposes, primarily scholarships and program activities.

The Foundation follows an endowment spending policy that allows for up to seven percent (7.0%) based on the average of total assets over the prior twelve (12) quarters, valued as of December 31, each year. The Foundation used 5.5% as its spending guideline during 2018. On an annual basis, the Foundation Board of Directors may determine the allocation within the spending amount, deciding the percent to be used for the purpose specified by the endowments, as well as for any non-investment related administrative costs. The Foundation used 4.5% for scholarships and 1.0% for administrative costs during 2018.

As part of its liquidity management plan, the Foundation invests cash in excess of daily requirements in readily available money market funds.

CLACKAMAS COMMUNITY COLLEGE FOUNDATION
NOTES TO FINANCIAL STATEMENTS
Year Ended December 31, 2018

3. CASH AND CASH EQUIVALENTS

Cash and cash equivalents consist of the following at December 31, 2018:

Cash on hand	\$ 200
Deposits with financial institution	<u>383,970</u>
Total cash and cash equivalents	<u>\$ 384,170</u>

The Foundation maintains a checking account and a money market account at a financial institution insured by the National Credit Union Share Insurance Fund (NCUSIF). Amounts on deposit sometimes exceed NCUSIF coverage. At December 31, 2018, the amount shown on deposit by the financial institution was \$351,008 which exceeds NCUSIF coverage by \$101,008.

4. UNCONDITIONAL PROMISES TO GIVE

Unconditional promises to give consist of the following at December 31, 2018:

Due within one year	\$ 49,429
Due within two years	26,571
Due within three years	<u>10,580</u>
Total unconditional promises to give	86,580
Less discount to net present value	<u>(6,265)</u>
Net unconditional promises to give	<u>\$ 80,315</u>

5. INVESTMENTS

Investments are stated at fair value and consist of the following at December 31, 2018:

Cash and money market funds	\$ 45,587
Equity mutual funds	10,279,278
Debt mutual funds	4,327,170
Hedge funds	<u>2,075,073</u>
Total investments	<u>\$ 16,727,108</u>

CLACKAMAS COMMUNITY COLLEGE FOUNDATION
NOTES TO FINANCIAL STATEMENTS
Year Ended December 31, 2018

5. INVESTMENTS (Contd)

The following summarizes the investment return and its classification in the statement of activities. Investment earnings include revenues from cash and money market funds, equity mutual funds, debt mutual funds and hedge funds.

	<u>Without Donor Restrictions</u>	<u>With Donor Restrictions</u>	<u>Total</u>
Realized investment earnings	\$ 96,080	\$ 471,335	\$ 567,415
Net unrealized losses on investments	<u>(325,700)</u>	<u>(1,731,598)</u>	<u>(2,057,298)</u>
Net	<u>\$ (229,620)</u>	<u>\$ (1,260,263)</u>	<u>\$ (1,489,883)</u>

The Foundation's investments are diversified in a variety of equity mutual funds, debt mutual funds and hedge funds. However, the Foundation's investments are subject to market fluctuations which could dramatically affect the fair value of these assets. The Foundation's investments are held by third-party custodians and are subject to custodial risk.

6. NET ASSETS WITH DONOR RESTRICTIONS

Net assets with donor restrictions consist of the following at December 31, 2018:

Subject to expenditure for specified purposes:

Endowment accounts:

Restricted for scholarships and program activities \$ 1,573,671

Non-endowment accounts:

Restricted for scholarships and program activities 1,723,214

Sub-total 3,296,885

Endowment funds restricted in perpetuity 13,097,161

Total \$ 16,394,046

During the year ended December 31, 2018, \$1,301,187 was released from restricted net assets because purpose restrictions were satisfied.

CLACKAMAS COMMUNITY COLLEGE FOUNDATION
NOTES TO FINANCIAL STATEMENTS
Year Ended December 31, 2018

7. ENDOWMENT FUNDS

Endowment funds activity during the year ended December 31, 2018 was as follows:

	<u>Temporarily Restricted</u>	<u>Permanently Restricted</u>	<u>Total</u>
Endowment funds, January 1, 2018	\$ 3,228,030	\$ 12,636,134	\$ 15,864,164
Contributions	-	381,340	381,340
Realized investment earnings	471,335	-	471,335
Net unrealized losses on investments	(1,731,598)	-	(1,731,598)
Endowments released from restrictions for scholarships and program activities	(255,192)	-	(255,192)
Endowments released from restrictions for general administration	(138,904)	-	(138,904)
Reclassifications	-	79,687	79,687
Endowment funds, December 31, 2018	<u>\$ 1,573,671</u>	<u>\$ 13,097,161</u>	<u>\$ 14,670,832</u>

8. FAIR VALUE MEASUREMENTS

The Foundation follows the requirements of Financial Accounting Standards Board (FASB) Accounting Standards Codification (ASC) 820, *Fair Value Measurements and Disclosures*. In accordance with FASB ASC 820, the fair value of a financial instrument is the price that would be received to sell an asset or paid to satisfy a liability in an orderly transaction between market participants at the measurement date. Accounting standards establish a framework for measuring fair value and a three level hierarchy for fair value measurements based upon observable and unobservable input valuation techniques. Observable inputs reflect market data obtained from independent sources, while unobservable inputs reflect significant market assumptions including those made by the reporting entity. The three level hierarchy is summarized as follows:

Level 1 - Quoted prices in active markets for identical securities

Level 2 - Other significant observable inputs (including quoted prices for similar securities, interest rates, credit risk, etc.)

Level 3 - Significant unobservable inputs (including the reporting entity's own assumptions in determining the fair value of investments)

CLACKAMAS COMMUNITY COLLEGE FOUNDATION
NOTES TO FINANCIAL STATEMENTS
Year Ended December 31, 2018

8. FAIR VALUE MEASUREMENTS (Contd)

Categorization within the valuation hierarchy is based upon the lowest level of input that is significant to the fair value measurement.

The Foundation's investments at December 31, 2018 consist of \$45,587 in cash and money market funds, \$10,279,278 in equity mutual funds, \$4,327,170 in debt mutual funds and \$2,075,073 in hedge funds.

The Foundation's investments in equity mutual funds and debt mutual funds are reported at fair value using quoted market prices in active markets for identical securities. This measurement is a Level 1 input which is considered to be the most objective standard for fair value measurement.

The Foundation's investments in the hedge funds are not valued using quoted market prices in active markets and are not redeemable at net asset value in the near term of the measurement date. Therefore, the hedge fund investments are not classified as Level 1 or Level 2.

The hedge fund investments are classified as Level 3. Changes in Level 3 hedge fund investments during 2018 were as follows:

Balance, January 1, 2018	\$ 806,403
Investments purchased	1,250,000
Net unrealized gains on investments	<u>18,670</u>
Balance, December 31, 2018	<u><u>\$ 2,075,073</u></u>

The Foundation's investments in the hedge funds may be redeemed quarterly with advance notice.

9. SUBSEQUENT EVENTS

The Foundation evaluated subsequent events for potential required disclosure through April 30, 2019, which is the date the financial statements were available to be issued.

This page intentionally left blank.

CLACKAMAS COMMUNITY COLLEGE
SCHEDULE OF THE PROPORTIONATE SHARE OF THE NET PENSION LIABILITY
OREGON PUBLIC EMPLOYEES RETIREMENT SYSTEM PENSION PLAN
For the last six fiscal years

Fiscal Year Ended June 30	(a) College's proportion of the net pension liability (asset)	(b) College's proportionate share of the net pension liability (asset)	(c) College's covered payroll	(b/c) College's proportionate share of the net pension liability (asset) as a percentage of its covered payroll	Plan fiduciary net position as a percentage of the total pension liability
2019	0.2580%	\$ 31,233,259	\$ 30,274,251	103.17%	82.07%
2018	0.2594%	27,517,204	28,121,331	97.85%	83.12%
2017	0.2592%	31,767,660	26,252,668	121.01%	80.53%
2016	0.2538%	5,964,232	25,138,162	23.73%	91.88%
2015	0.2879%	(16,207,218)	23,690,248	-68.41%	103.60%
2014	0.2879%	5,933,351	23,690,248	25.05%	91.97%

The amounts presented for each fiscal year were actuarially determined at December 31 and rolled forward to the measurement date, which is a date one year earlier than the fiscal year-end date above.

This schedule is presented to illustrate the requirements to show information for ten years. However, until a full ten-year trend has been compiled, information is presented only for the years for which the required supplementary information is available.

CLACKAMAS COMMUNITY COLLEGE
SCHEDULE OF CONTRIBUTIONS
OREGON PUBLIC EMPLOYEES RETIREMENT SYSTEM PENSION PLAN
For the last six fiscal years

Fiscal Year Ended June 30	(a) Statutorily required contribution	(b) Contributions in relation to the statutorily required contribution	(a-b) Contribution deficiency (excess)	(c) College's covered payroll	(b/c) Contributions as a percent of covered payroll
2019	\$ 2,763,315	\$ 2,763,315	-	\$ 31,917,105	8.66%
2018	2,577,372	2,577,372	-	30,274,251	8.51%
2017	1,469,874	1,469,874	-	28,121,331	5.23%
2016	1,616,475	1,616,475	-	26,252,668	6.16%
2015	1,996,578	1,996,578	-	25,138,162	7.94%
2014	1,636,396	1,636,396	-	23,690,248	6.91%

The amounts presented for each fiscal year were actuarially determined at December 31 and rolled forward to the measurement date, which is a date one year earlier than the fiscal year-end date above. However, the contributions above represent contributions made during the respective fiscal year indicated above

This schedule is presented to illustrate the requirements to show information for ten years. However, until a full ten-year trend has been compiled, information is presented only for the years for which the required supplementary information is available.

CLACKAMAS COMMUNITY COLLEGE
NOTES TO REQUIRED SUPPLEMENTARY INFORMATION
OREGON PUBLIC EMPLOYEES RETIREMENT SYSTEM PENSION PLAN
Year Ended June 30, 2019

Changes in Plan Provisions

Key changes in plan provisions are described in the Oregon Public Employees Retirement System's GASB 68 Disclosure Information which was published on September 18, 2013 and can be found at:

<https://www.oregon.gov/pers/EMP/Documents/GASB/2014/GASB-Disclosure-Information.pdf> and in a letter from the plan's actuary dated May 23, 2016 which can be found at:

<https://www.oregon.gov/pers/EMP/Documents/GASB/2015/Letter-From-Actuary-5-23-16.pdf>

Changes in Assumptions

Key changes in assumptions for the December 31, 2012 and 2013 valuations are described in the Oregon Public Employees Retirement System's 2012 Experience Study (Updated) which was published on September 18, 2013 and can be found at:

<https://www.oregon.gov/PERS/Documents/Financials/Actuarial/2013/Experience-Study-Updated.pdf>

Key changes in assumptions for the December 31, 2014 and 2015 valuations are described in the Oregon Public Employees Retirement System's 2014 Experience Study which was published on September 23, 2015 and can be found at:

<https://www.oregon.gov/PERS/Documents/Financials/Actuarial/2015/Experience-Study.pdf>

Key changes in assumptions for the December 31, 2016 valuation are the reduction of the discount rate and the assumed investment rate of return from 7.5% to 7.2%.

CLACKAMAS COMMUNITY COLLEGE
SCHEDULE OF CHANGES IN THE COLLEGE'S TOTAL PENSION LIABILITY AND RELATED RATIOS
EARLY RETIREMENT PLAN
For the last three fiscal years

	Fiscal Year Ended		
	June 30, 2019	June 30, 2018	June 30, 2017
Total pension liability			
Service cost	\$ 30,060	\$ 29,327	\$ 29,327
Interest on total pension liability	28,252	30,289	32,009
Change in benefit terms	175,355	-	-
Differences between expected and actual experience	336,264	-	-
Changes of assumptions or other input	(103,126)	-	-
Benefit payments	(153,223)	(105,425)	(108,983)
Net change in total pension liability	313,582	(45,809)	(47,647)
Total pension liability - beginning	799,935	845,744	893,391
Total pension liability - ending (a)	<u>\$ 1,113,517</u>	<u>\$ 799,935</u>	<u>\$ 845,744</u>
Covered-employee payroll	\$ 14,646,594	\$ 14,141,290	\$ 13,796,380
Total pension liability - ending as a percentage of covered-employee payroll	7.60%	5.66%	6.13%

Notes to Schedule:

Schedule Presentation: This schedule is presented to illustrate the requirements to show information for 10 years. However, until a full 10-year trend has been compiled, information is presented only for the years for which the required supplementary information is available.

There are no assets accumulated in a trust that meets the criteria in paragraph 4 of GASB 73.

Changes of assumptions: In the actuarial valuation used to determine the total pension liability as of June 30, 2019, the discount rate was reduced from 3.75% to 3.5% and the projected salary increases per annum was increased from 2.5% to 3.5%

CLACKAMAS COMMUNITY COLLEGE
SCHEDULE OF THE PROPORTIONATE SHARE OF THE NET OPEB LIABILITY
OREGON PUBLIC EMPLOYEES RETIREMENT SYSTEM OPEB PLAN
For the last three fiscal years

Fiscal Year Ended June 30	(a) College's proportion of the net OPEB liability (asset)	(b) College's proportionate share of the net OPEB liability (asset)	(c) College's covered payroll	(b/c) College's proportionate share of the net OPEB liability (asset) as a percentage of its covered payroll	Plan fiduciary net position as a percentage of the total OPEB liability
2019	0.2855%	\$ (318,741)	\$ 30,274,251	-1.05%	123.99%
2018	0.2756%	(115,001)	28,121,331	-0.41%	108.89%
2017	0.2755%	74,807	26,252,668	0.28%	93.84%

The amounts presented for each fiscal year were actuarially determined at December 31 and rolled forward to the measurement date, which is a date one year earlier than the fiscal year-end date above.

This schedule is presented to illustrate the requirements to show information for ten years. However, until a full ten-year trend has been compiled, information is presented only for the years for which the required supplementary information is available.

CLACKAMAS COMMUNITY COLLEGE
SCHEDULE OF CONTRIBUTIONS
OREGON PUBLIC EMPLOYEES RETIREMENT SYSTEM OPEB PLAN
For the last three fiscal years

Fiscal Year Ended June 30	(a) Statutorily required contribution	(b) Contributions in relation to the statutorily required contribution	(a-b) Contribution deficiency (excess)	(c) College's covered payroll	(b/c) Contributions as a percent of covered payroll
2019	\$ 144,137	\$ 144,137	-	\$ 31,917,105	0.45%
2018	138,260	138,260	-	30,274,251	0.46%
2017	133,916	133,916	-	28,121,331	0.48%

The amounts presented for each fiscal year were actuarially determined at December 31 and rolled forward to the measurement date, which is a date one year earlier than the fiscal year-end date above. However, the contributions above represent contributions made during the respective fiscal year indicated above

This schedule is presented to illustrate the requirements to show information for ten years. However, until a full ten-year trend has been compiled, information is presented only for the years for which the required supplementary information is available.

CLACKAMAS COMMUNITY COLLEGE
NOTES TO REQUIRED SUPPLEMENTARY INFORMATION
OREGON PUBLIC EMPLOYEES RETIREMENT SYSTEM OPEB PLAN
Year Ended June 30, 2019

Changes in Plan Provisions

Key changes in plan provisions are described in the Oregon Public Employees Retirement System's GASB 68 Disclosure Information which was published on September 18, 2013 and can be found at:

<https://www.oregon.gov/pers/EMP/Documents/GASB/2014/GASB-Disclosure-Information.pdf> and in a letter from the plan's actuary dated May 23, 2016 which can be found at:

<https://www.oregon.gov/pers/EMP/Documents/GASB/2015/Letter-From-Actuary-5-23-16.pdf>

Changes in Assumptions

Key changes in assumptions for the December 31, 2012 and 2013 valuations are described in the Oregon Public Employees Retirement System's 2012 Experience Study (Updated) which was published on September 18, 2013 and can be found at:

<https://www.oregon.gov/PERS/Documents/Financials/Actuarial/2013/Experience-Study-Updated.pdf>

Key changes in assumptions for the December 31, 2014 and 2015 valuations are described in the Oregon Public Employees Retirement System's 2014 Experience Study which was published on September 23, 2015 and can be found at:

<https://www.oregon.gov/PERS/Documents/Financials/Actuarial/2015/Experience-Study.pdf>

Key changes in assumptions for the December 31, 2016 valuation are the reduction of the discount rate and the assumed investment rate of return from 7.5% to 7.2%.

CLACKAMAS COMMUNITY COLLEGE
SCHEDULE OF CHANGES IN THE COLLEGE'S TOTAL OPEB LIABILITY AND RELATED RATIOS
EARLY RETIREMENT PLAN
for the last three fiscal years

	Fiscal Year Ended		
	June 30, 2019	June 30, 2018	June 30, 2017
Total OPEB liability			
Service cost	\$ 333,675	\$ 325,537	\$ 325,537
Interest on total OPEB liability	356,592	355,823	361,228
Differences between expected and actual experience	2,905,068		
Changes of assumptions or other input	(744,026)		
Benefit payments	(807,234)	(856,298)	(805,482)
Net change in total OPEB liability	2,044,075	(174,938)	(118,717)
Total OPEB liability - beginning	9,579,056	9,753,994	9,872,711
Total OPEB liability - ending (a)	<u>\$ 11,623,131</u>	<u>\$ 9,579,056</u>	<u>\$ 9,753,994</u>
Covered-employee payroll	\$ 26,598,175	\$ 25,641,755	\$ 25,016,346
Total OPEB liability - ending as a percentage of covered-employee payroll	43.70%	37.36%	38.99%

Notes to Schedule:

Schedule Presentation: This schedule is presented to illustrate the requirements to show information for 10 years. However, until a full 10-year trend has been compiled, information is presented only for the years for which the required supplementary information is available.

There are no assets accumulated in a trust that meets the criteria in paragraph 4 of GASB 75.

Changes of assumptions: In the actuarial valuation used to determine the total OPEB liability as of June 30, 2019, the discount rate was reduced from 3.75% to 3.5% and the projected salary increases per annum was increased from 2.5% to 3.5%

OTHER SUPPLEMENTARY INFORMATION

Local budget law, found in Oregon Revised Statutes (ORS) 294, requires the College budget current financial resources, on a modified accrual basis, in all funds. This section presents financial results on a budget basis.

CLACKAMAS COMMUNITY COLLEGE
FUND DESCRIPTIONS
Year Ended June 30, 2019

The **General Fund** accounts for ongoing College operations, recording all activity not segregated in other funds.

Special Revenue funds account for revenue that is legally restricted to specific purposes by outside parties, or designated for specific purposes by the Board of Education.

Fee Fund	Accounts for course fees which cover costs beyond those of the normal classroom.
Innovation Fund	Pays for projects and purchases which advance strategic priorities.
Student Technology Fund	Purchases, replaces and upgrades student technology, software, and related infrastructure; and covers operating costs for maintenance of student technology.
Intramurals and Athletics Fund	Intercollegiate athletic teams, intramural activities, and sports clubs.
Student Life and Leadership Fund	Promotes student activities which stimulate social, physical, moral and intellectual life on campus.
Computer Lab Fund	The Streeter computer labs provide computers and tutorial assistance to students.
Student Financial Aid Fund	Receipt and award of financial aid to students from loans, grants, scholarships and work study.
Grants & Contracts Fund	Cost-reimbursable grants and contracts.
Retirement Fund	Early retirement stipends & post employment health insurance benefits.
Insurance Reserve Fund	Reserves for the cost of insurance claims within self-insured retention.
PERS Reserve Fund	Reserves which can be used to mitigate future increases in PERS rates.
Technology Infrastructure & Software Implementation	Reserves for replacement of IT infrastructure and college-wide software.

The **Debt Service** fund accounts for payment of principal and interest on long-term debt.

Capital Projects funds account for the construction of buildings, land improvements, utility and other infrastructure; major repair and renovation; and the purchase of equipment, land or buildings.

Staff Computer Replacement Fund	Purchase current computers for staff use.
Equipment Replacement Fund	Purchase instructional and other equipment.
Major Maintenance Fund	Major repairs, remodeling, and preventative maintenance of buildings and infrastructure.
Capital Projects (Bond) Fund	Construct buildings, modernize classrooms and equipment, and perform deferred maintenance and infrastructure projects.

Proprietary funds account for operations that are similar to private businesses, where the intent is that costs be recovered primarily through charges to those who use the services.

Bookstore Fund	Provides textbooks, software, school supplies, and other merchandise.
Customized Training Fund	Contracted training provided to business, industry, and government organizations.
Internal Service Fund	Accounts for services provided to departments within the college on a cost-reimbursement basis.

CLACKAMAS COMMUNITY COLLEGE
SCHEDULE OF REVENUE, EXPENDITURES, AND CHANGES IN FUND BALANCE - BUDGET AND ACTUAL
GENERAL FUND
Year Ended June 30, 2019

	Original Budget	Final Budget	Actual	Variance Favorable (Unfavorable)
REVENUE				
Revenue from state sources				
State appropriation	\$ 16,205,295	\$ 16,205,295	\$ 16,086,121	\$ (119,174)
State grants and contracts	2,000	2,000	-	(2,000)
Revenue from local sources				
Property taxes	19,441,028	19,441,028	19,955,604	514,576
Tuition	15,299,702	15,343,377	13,780,390	(1,562,987)
Fees	1,476,244	1,476,244	1,342,346	(133,898)
Sales of goods and services	-	-	100	100
Local grants and contracts	278,967	278,967	289,134	10,167
Interest Income	-	-	1,182,399	1,182,399
Other local revenue	1,075,656	1,075,656	261,907	(813,749)
Total revenue	<u>53,778,892</u>	<u>53,822,567</u>	<u>52,898,001</u>	<u>(924,566)</u>
EXPENDITURES				
Personnel services	45,991,676	45,788,061	44,196,068	1,591,993
Materials and services	8,271,883	8,642,173	8,341,655	300,518
Capital outlay	120,000	120,000	82,128	37,872
Total expenditures	<u>54,383,559</u>	<u>54,550,234</u>	<u>52,619,851</u>	<u>1,930,383</u>
Excess (deficiency) of revenue over (under) expenditures	<u>(604,667)</u>	<u>(727,667)</u>	<u>278,150</u>	<u>1,005,817</u>
OTHER FINANCING SOURCES (USES)				
Transfers in from other funds	60,000	200,000	200,000	-
Transfers (out to) other funds	(2,044,740)	(2,069,240)	(1,919,240)	150,000
Proceeds from sale of capital assets	-	-	12,286	12,286
Total other financing sources (uses)	<u>(1,984,740)</u>	<u>(1,869,240)</u>	<u>(1,706,954)</u>	<u>162,286</u>
Excess (deficiency) of revenue and other sources (uses) over (under) expenditures	<u>(2,589,407)</u>	<u>(2,596,907)</u>	<u>(1,428,804)</u>	<u>1,168,103</u>
FUND BALANCE				
Beginning fund balance	<u>11,701,000</u>	<u>10,449,503</u>	<u>10,449,504</u>	<u>1</u>
Ending fund balance	<u>\$ 9,111,593</u>	<u>\$ 7,852,596</u>	<u>\$ 9,020,700</u>	<u>\$ 1,168,104</u>

This page intentionally left blank.

CLACKAMAS COMMUNITY COLLEGE
SCHEDULE OF REVENUE, EXPENDITURES, AND CHANGES IN FUND BALANCE - BUDGET AND ACTUAL
SPECIAL REVENUE FUNDS - UNRESTRICTED OPERATIONS
Year Ended June 30, 2019

	Original Budget	Final Budget	Actual Fee Fund
REVENUE			
Revenue from local sources			
Fees	\$ 2,717,839	\$ 2,717,839	\$ 3,475,139
Sales of goods and services	37,000	37,000	53,914
Local grants and contracts	350,000	350,000	537,441
Other local revenue	49,000	41,500	8,432
Total revenue	<u>3,153,839</u>	<u>3,146,339</u>	<u>4,074,926</u>
EXPENDITURES			
Personnel services	2,736,440	2,890,681	2,749,404
Materials and services	1,170,008	1,404,701	1,060,487
Capital outlay	31,000	31,000	10,699
Total expenditures	<u>3,937,448</u>	<u>4,326,382</u>	<u>3,820,590</u>
Excess (deficiency) of revenue over (under) expenditures	(783,609)	(1,180,043)	254,336
OTHER FINANCING SOURCES (USES)			
Transfers in from other funds	293,000	301,500	51,500
Excess (deficiency) of revenue and other sources (uses) over (under) expenditures	(490,609)	(878,543)	305,836
FUND BALANCE			
Beginning fund balance	<u>1,613,584</u>	<u>2,759,354</u>	<u>2,279,750</u>
Ending fund balance	<u>\$ 1,122,975</u>	<u>\$ 1,880,811</u>	<u>\$ 2,585,586</u>

Actual (continued)		
Innovation Fund	Total Actual	Variance Favorable (Unfavorable)
\$ -	\$ 3,475,139	\$ 757,300
-	53,914	16,914
-	537,441	187,441
-	8,432	(33,068)
-	4,074,926	928,587
13,707	2,763,111	127,570
137,119	1,197,606	207,095
-	10,699	20,301
150,826	3,971,416	354,966
(150,826)	103,510	1,283,553
250,000	301,500	-
99,174	405,010	1,283,553
479,603	2,759,353	(1)
<u>\$ 578,777</u>	<u>\$ 3,164,363</u>	<u>\$ 1,283,552</u>

CLACKAMAS COMMUNITY COLLEGE
SCHEDULE OF REVENUE, EXPENDITURES, AND CHANGES IN FUND BALANCE - BUDGET AND ACTUAL
SPECIAL REVENUE FUNDS - DEDICATED STUDENT FEES
Year Ended June 30, 2019

	Original Budget	Final Budget	Actual	
			Student Technology Fund	Intramurals and Athletics Fund
REVENUE				
Revenue from local sources				
Fees	\$ 1,265,000	\$ 1,265,000	\$ 815,170	\$ 275,661
Sales of goods and services	-	-	-	-
Other local revenue	165,000	165,000	-	100,291
Total revenue	<u>1,430,000</u>	<u>1,430,000</u>	<u>815,170</u>	<u>375,952</u>
EXPENDITURES				
Personnel services	482,759	482,759	421,652	-
Materials and services	976,600	992,600	296,305	396,718
Total expenditures	<u>1,459,359</u>	<u>1,475,359</u>	<u>717,957</u>	<u>396,718</u>
Excess (deficiency) of revenue over (under) expenditures	<u>(29,359)</u>	<u>(45,359)</u>	<u>97,213</u>	<u>(20,766)</u>
OTHER FINANCING SOURCES (USES)				
Transfers in from other funds	-	17,000	-	17,000
Transfers (out to) other funds	-	(1,000)	-	-
Total other financing sources (uses)	<u>-</u>	<u>16,000</u>	<u>-</u>	<u>17,000</u>
Excess (deficiency) of revenue and other sources (uses) over (under) expenditures	<u>(29,359)</u>	<u>(29,359)</u>	<u>97,213</u>	<u>(3,766)</u>
FUND BALANCE				
Beginning fund balance	<u>1,084,223</u>	<u>1,204,304</u>	<u>899,668</u>	<u>53,206</u>
Ending fund balance	<u>\$ 1,054,864</u>	<u>\$ 1,174,945</u>	<u>\$ 996,881</u>	<u>\$ 49,440</u>

Actual (continued)			
Student Life and Leadership Fund	Computer Lab Fund	Total Actual	Variance Favorable (Unfavorable)
\$ 46,173	\$ 48,304	\$ 1,185,308	\$ (79,692)
66	-	66	66
<u>127,612</u>	<u>-</u>	<u>227,903</u>	<u>62,903</u>
<u>173,851</u>	<u>48,304</u>	<u>1,413,277</u>	<u>(16,723)</u>
-	52,736	474,388	8,371
<u>142,082</u>	<u>419</u>	<u>835,524</u>	<u>157,076</u>
<u>142,082</u>	<u>53,155</u>	<u>1,309,912</u>	<u>165,447</u>
<u>31,769</u>	<u>(4,851)</u>	<u>103,365</u>	<u>148,724</u>
-	-	17,000	-
<u>(1,000)</u>	<u>-</u>	<u>(1,000)</u>	<u>-</u>
<u>(1,000)</u>	<u>-</u>	<u>16,000</u>	<u>-</u>
30,769	(4,851)	119,365	148,724
<u>135,646</u>	<u>115,783</u>	<u>1,204,303</u>	<u>(1)</u>
<u>\$ 166,415</u>	<u>\$ 110,932</u>	<u>\$ 1,323,668</u>	<u>\$ 148,723</u>

CLACKAMAS COMMUNITY COLLEGE
SCHEDULE OF REVENUE, EXPENDITURES, AND CHANGES IN FUND BALANCE - BUDGET AND ACTUAL
SPECIAL REVENUE FUNDS - EXTERNALLY RESTRICTED
Year Ended June 30, 2019

	Original Budget	Final Budget	Actual Student Financial Aid Fund
REVENUE			
Revenue from state sources			
State grants and contracts	\$ 500,000	\$ 500,000	\$ -
State student financial aid	1,800,000	1,800,000	2,857,377
Revenue from local sources			
Fees	200,000	200,000	-
Local grants and contracts	531,400	531,400	-
Local student financial aid	900,000	900,000	968,120
Other local revenue	1,000,000	1,000,000	-
Revenue from federal sources			
Federal grants and contracts	6,500,000	6,500,000	-
Federal student financial aid	7,735,495	7,735,495	6,583,226
Other federal revenue	20,073	20,073	15,774
Total revenue	<u>19,186,968</u>	<u>19,186,968</u>	<u>10,424,497</u>
EXPENDITURES			
Personnel services	5,254,223	4,954,223	160,435
Materials and services	12,360,886	12,835,886	10,280,684
Capital outlay	220,000	220,000	-
Total expenditures	<u>17,835,109</u>	<u>18,010,109</u>	<u>10,441,119</u>
Excess (deficiency) of revenue over (under) expenditures	1,351,859	1,176,859	(16,622)
OTHER FINANCING SOURCES (USES)			
Transfers in from other funds	165,600	340,600	-
Excess (deficiency) of revenue and other sources (uses) over (under) expenditures	1,517,459	1,517,459	(16,622)
FUND BALANCE			
Beginning fund balance	809,000	843,104	155,664
Ending fund balance	<u>\$ 2,326,459</u>	<u>\$ 2,360,563</u>	<u>\$ 139,042</u>

Actual (continued)		
Grants and Contracts Fund	Total Actual	Variance Favorable (Unfavorable)
\$ 1,106,196	\$ 1,106,196	\$ 606,196
-	2,857,377	1,057,377
234,792	234,792	34,792
520,855	520,855	(10,545)
-	968,120	68,120
983,879	983,879	(16,121)
2,996,184	2,996,184	(3,503,816)
-	6,583,226	(1,152,269)
4,680	20,454	381
<u>5,846,586</u>	<u>16,271,083</u>	<u>(2,915,885)</u>
3,305,783	3,466,218	1,488,005
2,488,734	12,769,418	66,468
60,882	60,882	159,118
<u>5,855,399</u>	<u>16,296,518</u>	<u>1,713,591</u>
(8,813)	(25,435)	(1,202,294)
<u>267,670</u>	<u>267,670</u>	<u>(72,930)</u>
258,857	242,235	(1,275,224)
687,439	843,103	(1)
<u>\$ 946,296</u>	<u>\$ 1,085,338</u>	<u>\$ (1,275,225)</u>

CLACKAMAS COMMUNITY COLLEGE
SCHEDULE OF REVENUE, EXPENDITURES, AND CHANGES IN FUND BALANCE - BUDGET AND ACTUAL
SPECIAL REVENUE FUNDS - RESERVE FUNDS
Year Ended June 30, 2019

	Original Budget	Final Budget	Actual Retirement Fund	Insurance Reserve Fund
EXPENDITURES				
Personnel services	\$ 908,208	\$ 958,208	\$ 694,703	\$ 28,681
Materials and services	582,600	532,600	-	4,702
Total expenditures	<u>1,490,808</u>	<u>1,490,808</u>	<u>694,703</u>	<u>33,383</u>
Excess (deficiency) of revenue over (under) expenditures	(1,490,808)	(1,490,808)	(694,703)	(33,383)
OTHER FINANCING SOURCES (USES)				
Transfers in from other funds	<u>920,000</u>	<u>920,000</u>	<u>620,000</u>	<u>-</u>
Excess (deficiency) of revenue and other sources (uses) over (under) expenditures	(570,808)	(570,808)	(74,703)	(33,383)
FUND BALANCE				
Beginning fund balance	<u>7,950,000</u>	<u>7,979,210</u>	<u>1,879,431</u>	<u>399,750</u>
Ending fund balance	<u>\$ 7,379,192</u>	<u>\$ 7,408,402</u>	<u>\$ 1,804,728</u>	<u>\$ 366,367</u>

Actual (continued)			
<u>PERS Reserve Fund</u>	<u>Tech Infrstr & Sftwre Impltn Fund</u>	<u>Total Actual</u>	<u>Variance Favorable (Unfavorable)</u>
\$ -	\$ -	\$ 723,384	\$ 234,824
-	199,349	204,051	328,549
-	199,349	927,435	563,373
-	(199,349)	(927,435)	563,373
-	200,000	820,000	(100,000)
-	651	(107,435)	463,373
<u>3,000,000</u>	<u>2,700,000</u>	<u>7,979,181</u>	<u>(29)</u>
<u>\$ 3,000,000</u>	<u>\$ 2,700,651</u>	<u>\$ 7,871,746</u>	<u>\$ 463,344</u>

CLACKAMAS COMMUNITY COLLEGE
SCHEDULE OF REVENUE, EXPENDITURES, AND CHANGES IN FUND BALANCE - BUDGET AND ACTUAL
DEBT SERVICE FUND
Year Ended June 30, 2019

	Original Budget	Final Budget	Actual	Variance Favorable (Unfavorable)
REVENUE				
Revenue from local sources				
Property taxes	\$ 6,608,660	\$ 6,608,660	6,938,297	\$ 329,637
Local grants and contracts	177,200	177,200	177,200	-
Interest income	-	-	30,351	30,351
Other local revenue	2,556,681	2,556,681	2,450,393	(106,288)
Total revenue	9,342,541	9,342,541	9,596,241	253,700
EXPENDITURES				
Debt service	10,631,632	10,631,632	10,631,632	-
Excess (deficiency) of revenue over (under) expenditures	(1,289,091)	(1,289,091)	(1,035,391)	253,700
FUND BALANCE				
Beginning fund balance	5,097,299	4,876,166	4,876,165	(1)
Ending fund balance	\$ 3,808,208	\$ 3,587,075	\$ 3,840,774	\$ 253,699

This page intentionally left blank.

CLACKAMAS COMMUNITY COLLEGE
SCHEDULE OF REVENUE, EXPENDITURES, AND CHANGES IN FUND BALANCE - BUDGET AND ACTUAL
CAPITAL PROJECTS FUNDS - UNRESTRICTED OPERATIONS
Year Ended June 30, 2019

	Original Budget	Final Budget	Actual Staff Computer Replacement Fund
REVENUE			
Fees	\$ 35,000	\$ 35,000	\$ -
EXPENDITURES			
Materials and services	625,000	636,825	121,688
Capital outlay	2,500,000	2,572,867	-
Total expenditures	3,125,000	3,209,692	121,688
Excess (deficiency) of revenue over (under) expenditures	(3,090,000)	(3,174,692)	(121,688)
OTHER FINANCING SOURCES (USES)			
Transfers in from other funds	909,140	909,140	159,140
Transfers (out to) other funds	(200,000)	(200,000)	(200,000)
Total other financing sources (uses)	709,140	709,140	(40,860)
Excess (deficiency) of revenue and other sources (uses) over (under) expenditures	(2,380,860)	(2,465,552)	(162,548)
FUND BALANCE			
Beginning fund balance	4,725,000	4,856,054	226,783
Ending fund balance	\$ 2,344,140	\$ 2,390,502	\$ 64,235

Actual (continued)			
Equipment Replacement Fund	Major Maintenance Fund	Total Actual	Variance Favorable (Unfavorable)
\$ 51,684	\$ -	\$ 51,684	\$ 16,684
129,484	268,726	519,898	116,927
57,144	3,254	60,398	2,512,469
186,628	271,980	580,296	2,629,396
(134,944)	(271,980)	(528,612)	2,646,080
250,000	500,000	909,140	-
-	-	(200,000)	-
250,000	500,000	709,140	-
115,056	228,020	180,528	2,646,080
1,843,318	2,785,953	4,856,054	-
<u>\$ 1,958,374</u>	<u>\$ 3,013,973</u>	<u>\$ 5,036,582</u>	<u>\$ 2,646,080</u>

CLACKAMAS COMMUNITY COLLEGE
SCHEDULE OF REVENUE, EXPENDITURES, AND CHANGES IN FUND BALANCE - BUDGET AND ACTUAL
CAPITAL PROJECTS FUNDS - EXTERNALLY RESTRICTED
Year Ended June 30, 2019

	Original Budget	Final Budget	Actual	Variance Favorable (Unfavorable)
REVENUE				
Revenue from state sources				
State grants and contracts	\$ 10,000,000	\$ 15,682,497	\$ 16,732,387	\$ 1,049,890
Revenue from local sources				
Interest income	-	-	741,592	741,592
Other local revenue	262,000	262,000	121,886	(140,114)
Total revenue	<u>10,262,000</u>	<u>15,944,497</u>	<u>17,595,865</u>	<u>1,651,368</u>
EXPENDITURES				
Personnel services	253,019	253,019	189,075	63,944
Materials and services	9,400,000	9,400,000	4,668,867	4,731,133
Capital outlay	37,500,000	27,500,000	20,243,668	7,256,332
Total expenditures	<u>47,153,019</u>	<u>37,153,019</u>	<u>25,101,610</u>	<u>12,051,409</u>
Excess (deficiency) of revenue over (under) expenditures	(36,891,019)	(21,208,522)	(7,505,745)	13,702,777
FUND BALANCE				
Beginning fund balance	45,500,000	29,817,503	29,817,503	-
Ending fund balance	<u>\$ 8,608,981</u>	<u>\$ 8,608,981</u>	<u>\$ 22,311,758</u>	<u>\$ 13,702,777</u>

This page intentionally left blank.

CLACKAMAS COMMUNITY COLLEGE
SCHEDULE OF REVENUE, EXPENDITURES, AND CHANGES IN FUND BALANCE - BUDGET AND ACTUAL
PROPRIETARY FUNDS - ENTERPRISE FUNDS
Year Ended June 30, 2019

	Original Budget	Final Budget	Actual Bookstore Fund
REVENUE			
Revenue from local sources			
Sales of goods and services	\$ 1,714,850	\$ 1,714,850	\$ 38,622
Local grants and contracts	500,000	500,000	-
Other local revenue	904,000	904,000	443,269
Total revenue	<u>3,118,850</u>	<u>3,118,850</u>	<u>481,891</u>
EXPENDITURES			
Personnel services	1,628,314	1,628,314	277,785
Materials and services	1,480,675	1,480,675	30,104
Capital outlay	10,000	10,000	-
Total expenditures	<u>3,118,989</u>	<u>3,118,989</u>	<u>307,889</u>
Excess (deficiency) of revenue over (under) expenditures	(139)	(139)	174,002
OTHER FINANCING SOURCES (USES)			
Transfers (out to) other funds	<u>(103,000)</u>	<u>(418,000)</u>	<u>(200,000)</u>
Excess (deficiency) of revenue and other sources (uses) over (under) expenditures	(103,139)	(418,139)	(25,998)
FUND BALANCE			
Beginning fund balance	<u>1,600,000</u>	<u>1,328,477</u>	<u>931,649</u>
Ending fund balance	<u>\$ 1,496,861</u>	<u>\$ 910,338</u>	<u>\$ 905,651</u>

Actual (continued)		
Customized Training Fund	Total Actual	Variance Favorable (Unfavorable)
\$ -	\$ 38,622	\$ (1,676,228)
407,045	407,045	(92,955)
-	443,269	(460,731)
<u>407,045</u>	<u>888,936</u>	<u>(2,229,914)</u>
331,731	609,516	1,018,798
56,318	86,422	1,394,253
-	-	10,000
<u>388,049</u>	<u>695,938</u>	<u>2,423,051</u>
18,996	192,998	193,137
<u>(195,070)</u>	<u>(395,070)</u>	<u>22,930</u>
(176,074)	(202,072)	216,067
<u>396,827</u>	<u>1,328,476</u>	<u>(1)</u>
<u>\$ 220,753</u>	<u>\$ 1,126,404</u>	<u>\$ 216,066</u>

CLACKAMAS COMMUNITY COLLEGE
SCHEDULE OF REVENUE, EXPENDITURES, AND CHANGES IN FUND BALANCE - BUDGET AND ACTUAL
PROPRIETARY FUNDS - INTERNAL SERVICE FUND
Year Ended June 30, 2019

	<u>Original Budget</u>	<u>Final Budget</u>	<u>Actual</u>	<u>Variance Favorable (Unfavorable)</u>
REVENUE				
Revenue from local sources				
Sales of goods and services	<u>\$ 360,000</u>	<u>\$ 360,000</u>	<u>\$ 464,101</u>	<u>\$ 104,101</u>
EXPENDITURES				
Personnel services	95,190	120,190	103,375	16,815
Materials and services	215,000	240,000	203,955	36,045
Capital outlay	<u>50,000</u>	<u>35,000</u>	<u>6,725</u>	<u>28,275</u>
Total expenditures	<u>360,190</u>	<u>395,190</u>	<u>314,055</u>	<u>81,135</u>
Excess (deficiency) of revenue over (under) expenditures	(190)	(35,190)	150,046	185,236
FUND BALANCE				
Beginning fund balance	<u>120,000</u>	<u>217,064</u>	<u>217,064</u>	<u>-</u>
Ending fund balance	<u><u>\$ 119,810</u></u>	<u><u>\$ 181,874</u></u>	<u><u>\$ 367,110</u></u>	<u><u>\$ 185,236</u></u>

This page intentionally left blank.

STATISTICAL SECTION

This section presents detailed and historical information as a context for understanding what the College financial statements, note disclosures, and required supplementary information say about its overall financial status. The information is categorized as follows.

Financial trend schedules show information over time.

- Net Position
- Changes in Net Position
- Fund Balance - Governmental Funds
- Change in Fund Balance - Governmental Funds

Revenue capacity schedules show details about property taxes, which provide a significant portion of the revenue used for College operations.

- Property Tax Rates, Assessed Valuation, and True Cash Value
- Direct and Overlapping Property Tax Rates
- Largest Taxpayers
- Property Tax Levies and Collections

Debt capacity tables are intended to help the reader assess the affordability of the College's current levels of outstanding debt and its ability to issue additional debt in the future.

- Debt Ratios
- Direct and Overlapping Bonded Debt
- Debt Limitation

Demographic and economic information provides background on the environment in which the College operates.

- Population, Personal Income, and Unemployment
- Largest Employers

Operating information includes historical data on the number of students served, and the resources used to deliver those services.

- Employees
- Students
- Buildings

CLACKAMAS COMMUNITY COLLEGE
NET POSITION
Last Ten Fiscal Years

Fiscal Year	Net Investment in Capital Assets	Restricted - Expendable	Unrestricted	Total
2018-19	\$ 46,449,134	\$ 695,340	\$ (28,206,094)	\$18,938,380
2017-18	29,696,420	547,062	(21,072,095)	9,171,387
2016-17	28,137,339	563,427	(22,067,414)	6,633,352
2015-16	26,981,461	414,249	(15,576,544)	11,819,166
2014-15	26,534,908	247,858	(1,824,249)	24,958,517
2013-14	24,956,166	371,351	(11,184,114)	14,143,403
2012-13	22,366,431	541,512	16,721,959	39,629,902
2011-12	20,395,473	587,359	18,661,158	39,643,990
2010-11	18,845,119	1,455,381	16,298,975	36,599,475
2009-10	16,875,233	5,373,616	14,006,002	36,254,851

Note: GASB Statements No. 73 & 75 implemented in 2016-17 and GASB Statements No. 68 & 71 implemented in 2014-15 affected the presentation of pension costs and postemployment healthcare benefit and hence the unrestricted net position. Restatement for years prior to 2013-14 was not required and is not presented.

CLACKAMAS COMMUNITY COLLEGE
CHANGES IN NET POSITION
Last Ten Fiscal Years

	2018-19	2017-18	2016-17	2015-16
OPERATING REVENUE				
Tuition and fees	\$ 16,361,665	\$ 17,140,638	\$ 17,049,343	\$ 16,953,358
Operating grants and contracts				
State	3,933,064	3,346,998	4,157,491	1,619,443
Local	2,492,750	2,240,472	2,271,416	2,357,140
Federal	9,492,349	10,380,064	10,240,247	11,281,962
Auxiliary enterprises				
Bookstore	481,891	1,700,684	1,847,530	2,023,075
Technical mechanical	-	-	-	-
Customized training	407,045	303,985	567,127	671,304
Other operating revenues	1,068,085	1,157,248	838,948	945,858
Total operating revenues	<u>34,236,849</u>	<u>36,270,089</u>	<u>36,972,102</u>	<u>35,852,140</u>
OPERATING EXPENSES				
Instruction	30,507,025	29,813,006	29,460,696	33,056,620
Instructional support	8,411,772	7,821,196	7,619,223	7,978,310
Student services	7,326,131	6,793,833	6,624,967	7,286,477
Community services	-	-	-	-
College support	13,918,614	12,785,513	11,827,828	11,516,983
Plant operations and maintenance	3,923,935	3,727,154	3,497,595	3,650,200
Plant additions	1,710,046	385,843	1,090,604	2,421,154
Financial aid	7,283,087	8,645,533	8,571,386	7,868,277
Auxiliary enterprises				
Bookstore	307,889	1,878,253	1,845,893	1,992,989
Technical mechanical	-	-	-	-
Customized training	388,049	472,059	486,834	531,138
Depreciation expense	3,285,335	2,864,690	2,382,915	2,270,817
Total operating expenses	<u>77,061,883</u>	<u>75,187,080</u>	<u>73,407,941</u>	<u>78,572,965</u>
Operating loss	<u>(42,825,034)</u>	<u>(38,916,991)</u>	<u>(36,435,839)</u>	<u>(42,720,825)</u>
NONOPERATING REVENUE (EXPENSES)				
State appropriation	12,143,616	19,735,505	10,576,148	17,640,158
Property taxes	26,873,965	25,098,090	23,896,589	22,795,401
Interest income	1,954,342	1,095,030	564,623	408,960
Investment gain (loss) on pension asset	-	-	-	-
Interest expense	(5,124,569)	(5,355,116)	(3,766,470)	(4,259,702)
Cost of long-term debt issuance	-	-	(271,745)	-
Gain (loss) on disposition of capital assets	12,286	13,177	2,076	(986,796)
Net nonoperating revenue (expenses)	<u>35,859,640</u>	<u>40,586,686</u>	<u>31,001,221</u>	<u>35,598,021</u>
CONTRIBUTED CAPITAL	<u>16,732,387</u>	<u>868,340</u>	<u>248,804</u>	<u>-</u>
Increase (decrease) in net position	9,766,993	2,538,035	(5,185,814)	(7,122,804)
NET POSITION				
Net position - beginning of the year	9,171,387	6,633,352	11,819,166	24,958,517
Prior period adjustment				(6,016,547)
Net position - end of the year	<u>\$18,938,380</u>	<u>\$ 9,171,387</u>	<u>\$ 6,633,352</u>	<u>\$11,819,166</u>

2014-15	2013-14	2012-13	2011-12	2010-11	2009-10
\$ 17,327,507	\$ 17,282,884	\$ 17,765,226	\$ 14,529,352	\$ 15,925,463	\$ 19,070,108
2,299,451	1,625,348	1,593,032	1,770,704	970,945	3,400,965
2,053,416	2,028,599	2,367,387	2,591,059	2,801,232	3,118,674
12,965,660	14,620,741	15,339,172	16,155,833	16,008,245	24,379,394
2,190,285	2,181,915	2,453,055	2,661,229	2,818,601	2,872,400
148,138	143,850	211,340	206,117	212,496	182,784
439,915	461,754	475,006	391,039	382,441	291,377
1,399,954	1,642,295	1,112,714	1,168,092	859,662	826,273
<u>38,824,326</u>	<u>39,987,386</u>	<u>41,316,932</u>	<u>39,473,425</u>	<u>39,979,085</u>	<u>54,141,975</u>
19,500,877	25,049,681	25,479,458	25,814,031	26,498,142	26,293,988
5,675,648	6,523,625	6,802,102	6,395,826	6,389,920	5,711,534
3,929,072	5,025,345	5,080,006	4,926,136	4,435,037	5,495,297
-	-	-	-	-	-
8,403,192	10,267,702	9,624,031	9,636,825	9,447,665	8,374,819
2,605,043	2,933,696	2,942,046	2,895,829	2,889,008	3,996,102
831,825	569,637	682,686	1,104,388	724,004	1,722,960
8,462,789	8,511,295	9,997,927	8,813,399	9,884,871	24,376,854
2,135,088	2,130,845	2,375,302	2,541,610	2,620,870	2,658,600
152,964	175,924	160,254	223,299	222,098	219,102
338,811	349,165	506,363	395,630	296,335	291,662
2,182,883	2,174,660	2,204,765	2,292,984	2,237,465	2,253,522
<u>54,218,192</u>	<u>63,711,575</u>	<u>65,854,940</u>	<u>65,039,957</u>	<u>65,645,415</u>	<u>81,394,440</u>
<u>(15,393,866)</u>	<u>(23,724,189)</u>	<u>(24,538,008)</u>	<u>(25,566,532)</u>	<u>(25,666,330)</u>	<u>(27,252,465)</u>
10,070,636	15,460,383	7,389,486	14,480,460	8,441,565	19,353,062
20,474,920	18,900,671	18,426,030	18,015,405	18,027,570	18,187,372
183,045	165,623	159,115	147,695	133,096	161,316
-	3,596,854	2,274,164	(165,290)	3,451,685	2,994,004
(4,038,082)	(3,514,698)	(3,713,240)	(3,879,380)	(4,055,984)	(4,167,191)
(386,747)	-	-	-	-	-
(94,792)	11,718	(11,635)	12,157	13,022	(48,500)
<u>26,208,980</u>	<u>34,620,551</u>	<u>24,523,920</u>	<u>28,611,047</u>	<u>26,010,954</u>	<u>36,480,063</u>
-	-	-	-	-	-
10,815,114	10,896,362	(14,088)	3,044,515	344,624	9,227,598
14,143,403	39,629,902	39,643,990	36,599,475	36,871,576	27,643,978
-	(36,382,861)	-	-	(616,725)	-
<u>\$24,958,517</u>	<u>\$14,143,403</u>	<u>\$39,629,902</u>	<u>\$39,643,990</u>	<u>\$36,599,475</u>	<u>\$36,871,576</u>

CLACKAMAS COMMUNITY COLLEGE
 FUND BALANCE - GOVERNMENTAL FUNDS
 Last Ten Fiscal Years

Fiscal Year	General Fund Unreserved	Other Governmental Funds			Total
		Special Revenue	Debt Service	Capital Projects	
2018-19	\$ 9,020,700	\$ 13,445,115	\$ 3,840,774	\$ 27,348,340	\$ 44,634,229
2017-18	10,449,504	12,785,940	4,876,165	34,673,557	52,335,662
2016-17	17,273,054	9,259,502	2,486,999	65,570,544	77,317,045
2015-16	18,670,488	6,599,963	2,444,082	29,585,035	38,629,080
2014-15	15,710,997	5,638,848	2,602,461	38,345,847	46,587,156
2013-14	12,180,027	6,090,469	9,437,348	1,493,498	17,021,315
2012-13	9,734,053	6,234,501	5,378,495	1,350,659	12,963,655
2011-12	9,435,521	6,631,340	5,325,570	1,461,273	13,418,183
2010-11	11,886,417	6,363,563	3,429,598	1,348,674	11,141,835
2009-10	10,017,054	6,270,189	5,296,136	1,255,001	12,821,326

Note: The State appropriation is allocated annually to each of the 17 Oregon community colleges. The support was historically received quarterly. In 2003, the Oregon Legislature reduced funding by eliminating that year's April payment. At the same time, they amended local budget law and allowed community colleges to accrue in place of the lost payment the first payment in the following biennium. Unreserved General Fund balance includes that accrued payment, as follows.

Fiscal Year	General Fund		
	Accrued Appropriation	Remainder	Total Unreserved
2018-19	\$ 3,942,505	\$ 5,078,195	\$ 9,020,700
2017-18	-	10,449,504	10,449,504
2016-17	3,703,083	13,569,971	17,273,054
2015-16	-	18,670,488	18,670,488
2014-15	2,965,027	12,745,970	15,710,997
2013-14	-	12,180,027	12,180,027
2012-13	2,611,789	7,122,264	9,734,053
2011-12	-	9,435,521	9,435,521
2010-11	3,313,799	8,572,618	11,886,417
2009-10	-	10,017,054	10,017,054

This page intentionally left blank.

CLACKAMAS COMMUNITY COLLEGE
CHANGE IN FUND BALANCE - GOVERNMENTAL FUNDS
Last Ten Fiscal Years

	2018-19	2017-18	2016-17	2015-16
REVENUE				
From state sources				
State appropriation	\$ 16,086,121	\$ 16,032,422	\$14,279,231	\$14,675,131
Operating grants and contracts	17,838,583	296,883	1,302,378	175,976
Student financial aid	2,857,377	3,052,944	2,876,792	1,443,750
Other state revenue	-	-	-	-
From local sources				
Property taxes	26,893,901	25,093,081	23,933,177	22,853,259
Tuition and fees	20,069,659	19,958,357	20,269,479	20,006,594
Operating grants and contracts	1,524,630	2,175,875	1,306,828	1,263,877
Student financial aid	968,120	932,937	964,588	1,093,263
Interest income	1,954,342	1,095,030	564,623	408,960
Other local revenue	4,108,480	3,927,433	4,007,765	3,306,942
From federal sources				
Operating grants and contracts	2,996,184	3,193,249	2,769,275	3,406,574
Student financial aid	6,583,226	7,260,117	7,523,843	8,003,312
Other federal revenue	20,454	2,366	17,439	21,106
Total revenue	<u>101,901,077</u>	<u>83,020,694</u>	<u>79,815,418</u>	<u>76,658,744</u>
EXPENDITURES				
Personal services	51,812,244	48,803,140	45,462,523	42,541,095
Materials and services	28,537,019	29,157,693	29,816,491	24,064,173
Capital outlay	20,457,775	27,757,300	11,405,532	6,794,646
Debt service - principal	7,290,000	5,630,000	5,715,000	5,170,000
Debt service - interest	3,341,632	3,623,671	2,905,151	3,169,354
Total expenditures	<u>111,438,670</u>	<u>114,971,804</u>	<u>95,304,697</u>	<u>81,739,268</u>
Excess (deficiency) of revenue over (under) expenditures	<u>(9,537,593)</u>	<u>(31,951,110)</u>	<u>(15,489,279)</u>	<u>(5,080,524)</u>
OTHER FINANCING SOURCES (USES)				
Proceeds from sale of assets	12,286	13,177	10,926	11,939
Proceeds from long-term debt	-	-	44,997,901	-
Premium (discount) on debt issuance	-	-	7,972,728	-
Refunding of long-term debt	-	-	-	-
Costs of debt issuance	-	-	(271,745)	-
Transfers in from other funds	2,515,310	7,932,750	5,299,211	2,613,420
Transfers (out to) other funds	<u>(2,120,240)</u>	<u>(7,799,750)</u>	<u>(5,229,211)</u>	<u>(2,543,420)</u>
Total other financing sources (uses)	<u>407,356</u>	<u>146,177</u>	<u>52,779,810</u>	<u>81,939</u>
Excess (deficiency) of revenue & other sources (uses) over (under) expenditures	<u>(9,130,237)</u>	<u>(31,804,933)</u>	<u>37,290,531</u>	<u>(4,998,585)</u>
FUND BALANCE				
Beginning fund balance	62,785,166	94,590,099	57,299,568	62,298,153
Prior period adjustment	-	-	-	-
Ending fund balance	<u>\$ 53,654,929</u>	<u>\$ 62,785,166</u>	<u>\$ 94,590,099</u>	<u>\$ 57,299,568</u>
Debt service as % of noncapital expenditures	13%	12%	11%	13%

2014-15	2013-14	2012-13	2011-12	2010-11	2009-10
\$ 13,035,663	\$ 12,848,594	\$ 10,001,275	\$ 11,166,661	\$ 11,755,364	\$ 14,626,846
1,117,954	511,628	486,268	828,024	659,243	1,235,714
1,189,084	1,114,026	1,109,609	945,861	312,627	2,181,455
-	-	361	195,587	1,133	1,000
20,474,354	19,294,610	18,422,912	17,866,383	18,129,351	18,150,627
20,045,425	20,822,470	21,348,366	21,165,843	20,267,253	19,070,108
1,109,529	1,178,225	1,538,797	1,607,782	1,901,710	2,217,073
945,566	850,374	828,964	983,277	907,441	905,888
183,045	165,623	159,115	147,695	133,096	161,316
3,645,121	6,196,366	3,183,024	2,955,764	2,766,558	2,653,407
7,364,186	10,772,505	7,994,862	5,103,426	4,111,052	4,442,773
8,880,539	23,226,954	29,171,405	30,969,863	28,657,293	19,994,654
18,991	20,791	22,320	15,686	13,927	14,478
<u>78,009,457</u>	<u>97,002,166</u>	<u>94,267,278</u>	<u>93,951,852</u>	<u>89,616,048</u>	<u>85,655,339</u>
43,955,776	44,361,916	44,269,265	42,086,067	39,223,289	39,235,754
23,389,142	36,959,298	41,575,084	43,411,912	41,551,046	36,520,857
909,571	904,727	532,849	767,273	609,295	266,722
5,180,000	4,760,000	4,350,000	3,965,000	3,945,000	3,955,000
3,407,188	3,604,788	3,803,927	3,968,305	4,145,821	4,257,470
<u>76,841,677</u>	<u>90,590,729</u>	<u>94,531,125</u>	<u>94,198,557</u>	<u>89,474,451</u>	<u>84,235,803</u>
<u>1,167,780</u>	<u>6,411,437</u>	<u>(263,847)</u>	<u>(246,705)</u>	<u>141,597</u>	<u>1,419,536</u>
1,250	22,197	47,851	12,157	13,275	461
44,996,012	-	-	-	-	2,770,000
1,952,257	-	-	-	-	142,099
(14,717,927)	-	-	-	-	(2,852,134)
(386,747)	-	-	-	-	(57,549)
7,331,040	9,597,451	4,548,638	6,299,698	2,376,142	5,877,000
<u>(7,246,854)</u>	<u>(9,527,451)</u>	<u>(4,488,638)</u>	<u>(6,239,698)</u>	<u>(2,341,142)</u>	<u>(5,842,000)</u>
<u>31,929,031</u>	<u>92,197</u>	<u>107,851</u>	<u>72,157</u>	<u>48,275</u>	<u>37,877</u>
33,096,811	6,503,634	(155,996)	(174,548)	189,872	1,457,413
29,201,342	22,697,708	22,853,704	23,028,252	22,838,380	21,380,967
-	-	-	-	-	-
<u>\$ 62,298,153</u>	<u>\$ 29,201,342</u>	<u>\$ 22,697,708</u>	<u>\$ 22,853,704</u>	<u>\$ 23,028,252</u>	<u>\$ 22,838,380</u>
13%	10%	9%	9%	10%	11%

CLACKAMAS COMMUNITY COLLEGE
PROPERTY TAX RATES, ASSESSED VALUATION, AND TRUE CASH VALUE
Last Ten Fiscal Years

Fiscal Year	Permanent Rate	General Obligation Bond Rate	Total Rate	Assessed Valuation by Property Type	
				Real Property	Manufactured Structures
2018-19	\$ 0.5582	0.1861	\$ 0.7443	\$ 35,448,881,713	\$ 161,845,004
2017-18	0.5582	0.1873	0.7455	33,912,667,773	146,290,521
2016-17	0.5582	0.1855	0.7437	32,324,247,998	130,803,756
2015-16	0.5582	0.1881	0.7463	30,854,212,703	121,449,200
2014-15	0.5582	0.1497	0.7079	29,532,124,849	114,900,888
2013-14	0.5582	0.1500	0.7082	28,114,981,194	110,433,279
2012-13	0.5582	0.1588	0.7170	26,992,148,145	112,629,866
2011-12	0.5582	0.1391	0.6973	26,414,056,848	112,538,178
2010-11	0.5582	0.1598	0.7180	25,742,593,312	117,401,264
2009-10	0.5582	0.1772	0.7354	24,985,368,070	146,471,096

Source: Clackamas County Department of Assessment and Taxation,
Summary of Assessment and Tax Roll

Note: The permanent rate for operations is fixed and cannot be changed by the College.
The levy for voter-approved general obligation bonds is requested for the amount needed to pay debt service. The County assessor converts the requested amount into the general obligation bond rate shown above.

Assessed Valuation by Property Type (continued)			True Cash Valuation	Ratio of Assessed Valuation to True Cash Valuation
Personal Property	Public Utility	Total		
\$ 818,230,431	\$ 1,380,441,600	\$ 37,809,398,748	\$ 56,103,649,839	67%
769,785,148	1,316,447,473	36,145,190,915	51,312,502,867	70%
749,025,427	1,238,258,588	34,442,335,769	46,420,375,556	74%
675,425,326	1,187,424,660	32,838,511,889	41,093,604,637	80%
635,154,193	1,070,179,674	31,352,359,604	37,127,451,547	84%
626,366,109	1,046,600,404	29,898,380,986	33,436,732,244	89%
610,969,398	1,008,144,740	28,723,892,149	31,790,623,553	90%
596,055,667	1,030,071,324	28,152,722,017	32,963,246,020	85%
625,801,508	1,010,528,329	27,496,324,413	35,334,250,182	78%
660,952,788	987,783,853	26,780,575,807	39,196,423,165	68%

CLACKAMAS COMMUNITY COLLEGE
 DIRECT AND OVERLAPPING PROPERTY TAX RATES
 Last Ten Fiscal Years

Fiscal Year	Clackamas Community College	Overlapping Rates			
		Cities	Fire Districts	School Districts	Other
2018-19	0.7443	.5894 - 8.9999	.5341 - 2.6385	4.7001 - 9.7571	.0315 - 3.2246
2017-18	0.7455	.5894 - 7.8836	.5341 - 2.6385	4.7001 - 9.6863	.0315 - 3.2246
2016-17	0.7437	.5894 - 6.5379	.5341 - 2.6385	3.8149 - 5.2781	.0065 - 2.9766
2015-16	0.7463	.5894 - 7.7626	.5341 - 2.6385	4.3039 - 9.3304	.0315 - 3.2246
2014-15	0.7079	.5894 - 7.8915	.5341 - 2.6385	4.7001 - 9.3439	.0315 - 3.2246
2013-14	0.7082	.5679 - 7.9801	.5341 - 2.6385	4.7001 - 9.3426	.0315 - 3.2246
2012-13	0.7170	.5894 - 7.8119	.5341 - 2.4655	.2608 - 9.4142	.1089 - 3.2246
2011-12	0.6973	.5894 - 7.6880	.7833 - 2.6385	.1914 - 9.3641	.0315 - 3.2246
2010-11	0.7180	.6101 - 7.7788	.7833 - 2.4678	.5949 - 9.3429	.0315 - 3.2246
2009-10	0.7354	.5894 - 7.8235	.7833 - 2.6385	.0901 - 9.2236	.0315 - 3.2246

Source: Clackamas County Department of Assessment and Taxation,
 Summary of Assessment and Tax Roll

Note: Overlapping rates are those that apply to property owners within the College taxing district.
 Not all overlapping rates apply to all owners in the College district. For example, certain property subject to the Clackamas County tax rate are not in the College district.

CLACKAMAS COMMUNITY COLLEGE
LARGEST TAXPAYERS
Current Year and Nine Years Ago

Taxpayer	2018-19			2009-10		
	Taxes Billed	Rank	Percentage of Total County Taxes Billed	Taxes Billed	Rank	Percentage of Total County Taxes Billed
Portland General Electric	\$10,048,629	1	1.18%	\$ 6,104,056	1	1.02%
General Growth Properties	4,414,999	2	0.52%	3,761,844	2	0.63%
Fred Meyer Fuel	4,063,314	3	0.48%			
Northwest Natural Gas	2,598,706	4	0.30%	2,335,074	4	0.39%
PCC Structurals Inc.	2,667,260	5	0.31%	1,388,602	6	0.21%
ROIC Oregon LLC	1,422,831	6	0.17%	1,804,779	5	0.30%
Comcast	1,344,241	7	0.16%	1,012,286	8	0.17%
Centurylink	1,172,356	8	0.14%			
Kaiser Foundation Hospital	1,089,909	9	0.13%			
Blount, Inc.	1,120,978	10	0.13%	752,710	10	0.13%
Clackamas Baking Plant				2,659,166	3	0.44%
Xerox Corporation				1,250,325	7	0.21%
Verizon Communications				828,190	9	0.14%
Total	\$29,943,225		3.51%	\$ 21,897,032		3.64%

Source: Clackamas County Department of Assessment and Taxation

CLACKAMAS COMMUNITY COLLEGE
PROPERTY TAX LEVIES AND COLLECTIONS
Last Ten Fiscal Years

Fiscal Year	Certified Tax Levies			Current Tax Collections	Current Tax Collected as a % of Current Levy
	General Fund	Debt Service Fund	Total		
2018-19	\$ 20,074,444	\$ 6,816,200	\$ 26,890,644	\$ 25,783,207	95.88%
2017-18	19,200,051	6,626,362	25,826,413	24,590,688	95.22%
2016-17	18,265,834	6,286,666	24,552,500	23,400,405	95.31%
2015-16	17,382,335	6,052,953	23,435,288	22,286,638	95.10%
2014-15	16,482,611	4,540,949	21,023,560	19,964,169	94.96%
2013-14	15,313,694	4,336,679	19,650,373	18,625,365	94.78%
2012-13	14,519,921	4,320,790	18,840,711	17,775,708	94.35%
2011-12	14,573,668	3,729,789	18,303,457	17,196,425	93.95%
2010-11	14,396,804	4,176,990	18,573,794	17,380,805	93.58%
2009-10	13,430,804	5,166,476	18,597,280	17,417,522	93.66%

Source: Clackamas County Department of Assessment and Taxation

<u>Delinquent Tax Collections</u>	<u>Total Tax Collections</u>	<u>Total Tax Collected as a % of Current Levy</u>	<u>Uncollected Taxes</u>	<u>Uncollected Taxes as a % of Current Levy</u>
\$ 909,645	26,692,852	99.26%	\$ 740,344	2.75%
326,305	24,916,993	96.48%	1,515,458	5.87%
389,427	23,789,832	96.89%	1,364,612	5.56%
406,578	22,693,216	96.83%	1,302,630	5.56%
466,649	20,430,818	97.18%	1,208,356	5.75%
535,558	19,160,923	97.51%	1,203,459	6.12%
506,115	18,281,823	97.03%	1,236,015	6.56%
494,365	17,690,790	96.65%	1,228,974	6.71%
628,555	18,009,360	96.96%	1,090,448	5.87%
627,521	18,045,043	97.03%	1,196,797	6.44%

CLACKAMAS COMMUNITY COLLEGE
DEBT RATIOS
Last Ten Fiscal Years

Fiscal Year	General Obligation Bonds	Pension Bonds	Full Faith and Credit Obligations	Capital Lease	Total Debt
2018-19	\$ 109,780,946	\$ 21,519,614	\$ -	-	\$ 131,300,560
2017-18	112,569,390	22,981,795	1,247,805	-	136,798,990
2016-17	115,034,548	24,278,976	1,376,461	-	140,689,985
2015-16	65,740,186	25,416,157	1,505,117	-	92,661,460
2014-15	69,039,563	26,408,338	1,628,773	-	97,076,674
2013-14	25,504,876	27,265,519	17,075,674	-	69,846,069
2012-13	28,689,022	27,997,700	18,135,433	-	74,822,155
2011-12	31,613,168	28,619,881	19,155,192	-	79,388,241
2010-11	34,307,314	29,127,062	20,134,951	-	83,569,327
2009-10	35,394,259	29,539,243	21,339,781	-	86,273,283

Sources: Portland State University Population Research Center
Clackamas County Department of Assessment and Taxation

General Obligation Bonds		Total Debt		
Percentage of Assessed Valuation	GO Bonds Per Capita	Percentage of Assessed Valuation	Total Debt per Capita	Percentage of Personal Income
0.29%	294	0.35%	352	not available
0.31%	307	0.38%	373	not available
0.33%	322	0.41%	394	not available
0.20%	188	0.28%	265	0.47%
0.22%	199	0.31%	280	0.50%
0.09%	75	0.23%	204	0.36%
0.10%	85	0.26%	222	0.40%
0.11%	94	0.28%	237	0.45%
0.12%	104	0.30%	253	0.49%
0.13%	106	0.32%	258	0.51%

CLACKAMAS COMMUNITY COLLEGE
DIRECT AND OVERLAPPING BONDED DEBT
June 30, 2019

Governmental Unit	Net Property- Tax Backed Direct Debt (1)	Percent of Real Market Value in College District	Net Property- Tax Backed Overlapping Direct Debt (1)
DIRECT			
Clackamas Community College	\$ 93,763,913	100.00%	\$ 93,763,913
OVERLAPPING			
Cities			
City of Canby	22,792,011	100.00%	22,792,011
City of Estacada	2,311,951	100.00%	2,311,951
City of Gladstone	4,170,000	100.00%	4,170,000
City of Happy Valley	-	0.00%	-
City of Lake Oswego	55,645,000	0.95%	528,794
City of Milwaukie	32,387,826	99.19%	32,124,221
City of Molalla	-	100.00%	-
City of Oregon City	14,125,000	100.00%	14,125,000
City of Portland	300,122,106	0.07%	213,387
City of Tualatin	22,924,766	11.74%	2,690,519
City of West Linn	32,435,000	99.18%	32,170,038
Fire Districts			
Canby	4,900,000	100.00%	4,900,000
Clackamas Cty #1	29,447,277	92.27%	27,172,121
Molalla	2,485,000	100.00%	2,485,000
Silverton	3,730,814	4.93%	183,821
Tualatin Valley Fire and Rescue	26,055,000	13.74%	3,579,462
School Districts			
108 Estacada	22,890,000	100.00%	22,890,000
115 Gladstone	39,401,716	100.00%	39,401,716
12 North Clackamas	694,062,196	100.00%	694,062,196
35 Molalla River	14,630,425	100.00%	14,630,425
3J West Linn/ Wilsonville	209,850,109	98.21%	206,086,867
46 Oregon Trail	87,695,487	0.09%	75,944
53 Colton	1,250,432	100.00%	1,250,432
62 Oregon City	212,093,894	100.00%	212,093,894
7J Lake Oswego	249,044,136	1.29%	3,207,938
86 Canby	50,166,039	100.00%	50,166,039
4J Silver Falls	42,222,914	8.70%	3,671,409
10J Gresham-Barlow	344,989,393	0.02%	53,818
23J Tigard-Tualatin	341,851,415	4.12%	14,099,320
88J Sherwood	327,983,172	6.29%	20,620,958
29J Newberg	29,217,497	1.65%	482,585
Other			
Metro	819,020,000	13.06%	106,990,221
Oak Lodge Water District	1,320,000	100.00%	1,320,000
Rivergrove Water District	536,529	10.97%	58,865
Northwest Regional ESD	-	0.89%	-
Willamette ESD	8,523,891	0.61%	52,038
Clackamas City ESD	20,970,000	75.10%	15,748,386
Clackamas County	129,945,000	73.54%	95,560,124
Clackamas Soil & Water Conservation	6,815,000	73.54%	5,011,683
Total overlapping	<u>4,208,010,996</u>		<u>1,656,981,183</u>
Total direct and overlapping	<u>\$ 4,301,774,909</u>		<u>\$ 1,750,745,096</u>

Source: Oregon State Treasury, Municipal Debt Advisory Commission

Note (1): Net property-tax backed debt is the outstanding principal of general obligation bonds, and certain full faith and credit obligations, particularly for Tri-met.

CLACKAMAS COMMUNITY COLLEGE
DEBT LIMITATION
Last Ten Fiscal Years

Fiscal Year	Legal Debt Limitation (1)	Bonded Indebtedness (2)	Debt Margin
2018-19	\$ 841,554,748	\$ 101,078,841	\$ 740,475,907
2017-18	769,687,543	103,155,464	666,532,079
2016-17	696,305,633	104,908,801	591,396,832
2015-16	616,404,070	63,206,376	553,197,694
2014-15	556,911,773	66,155,041	490,756,732
2013-14	501,550,984	24,370,000	477,180,984
2012-13	476,859,353	27,365,000	449,494,353
2011-12	494,448,690	30,100,000	464,348,690
2010-11	530,013,753	32,605,000	497,408,753
2009-10	587,946,347	34,840,000	553,106,347

Notes:

- (1) The legal debt limitation in Oregon Revised Statutes 341.675 is 1.5% of the real market value of property, which is titled True Cash Valuation on the table of Property Tax Rates, Assessed Valuation, and True Cash Value.
- (2) Bonded indebtedness is the outstanding principal amount of general obligation bonds. The College may levy property taxes in the amount necessary to pay debt service on these bonds.

CLACKAMAS COMMUNITY COLLEGE
POPULATION, PERSONAL INCOME, AND UNEMPLOYMENT
Last Ten Fiscal Years

Fiscal Year	District Population (1)	Clackamas County		
		Personal Income (2)	Per Capita Personal Income (2)	Unemployment Rate (3)
2018-19	372,790	not available	not available	3.8%
2017-18	367,225	not available	not available	3.7%
2016-17	356,900	not available	not available	4.4%
2015-16	349,690	\$19,901,153,000	\$ 49,565	5.2%
2014-15	346,817	19,240,407,000	48,713	6.3%
2013-14	341,663	19,200,727,000	49,453	6.8%
2012-13	337,594	18,535,004,000	48,286	8.1%
2011-12	334,535	17,457,115,000	45,915	8.6%
2010-11	330,505	16,945,867,000	44,954	10.1%
2009-10	334,885	16,853,655,000	43,646	10.2%

- Sources: (1) Portland State University Population Research Center
Data is for Clackamas County, excluding the cities of Lake Oswego and Sandy.
- (2) Bureau of Economic Analysis, US Department of Commerce.
Data is for Clackamas County, in thousands of dollars.
- (3) Oregon Employment Department
Data is for Clackamas County.

Note: The College district includes all of Clackamas County except the cities of Lake Oswego and Sandy.

CLACKAMAS COMMUNITY COLLEGE
LARGEST EMPLOYERS
Current Year and Nine Years Ago

Employer	2018-19	2009-10		
	Number of Employees	Number of Employees	Rank	Percentage of Total County Employment
Kaiser Sunnyside	2,000 +	3,639	1	2.67%
PCC Structurals	1,400 +	1,130	3	0.83%
Oregon Cutting Systems	1,200 +			
Providence	900 +			
Legacy Meridian Park	900 +			
Mentor Graphics	900 +	1,134	2	0.83%
Xerox Corporation	800 +			
Kroger	800 +			
Safeway	700 +			0.45%
Rockwell Collins	500 +			
Blount International Inc.		1,000	4	0.73%
United Grocers		604	5	0.44%
Willamette Falls Hospital		524	6	0.38%
Sysco		514	7	0.38%
Tyco		511	8	0.37%
Fred Meyer Warehouse		500	9	0.37%
Warn Industries, Inc.		343	10	0.38%
Total Clackamas County employment	162,800			

Source: Clackamas County.

CLACKAMAS COMMUNITY COLLEGE
EMPLOYEES
Last Ten Fiscal Years

Fiscal Year	Employee FTE (full-time equivalents)			
	Administrative	Full-time Faculty	Classified	Total
2018-19	48	135	209	392
2017-18	47	136	209	392
2016-17	47	136	197	380
2015-16	43	133	192	368
2014-15	42	130	187	359
2013-14	41	128	173	342
2012-13	42	133	180	355
2011-12	37	141	169	347
2010-11	37	150	188	375
2009-10	37	152	193	382

Source: Schedule of personnel FTEs in the adopted budget.

Note: Administrative employees are those who are exempt from the overtime provisions of the Fair Labor Standards Act. Full-time faculty are faculty in that bargaining unit. Classified includes support staff in the bargaining unit, and confidential and grant-funded non-exempt employees working half-time or more who are excluded from the classified bargaining unit. Includes all funds.

CLACKAMAS COMMUNITY COLLEGE
STUDENTS
Last Ten Fiscal Years

Fiscal Year	Reimbursable Student FTE	Total Student FTE	Student Headcount
2018-19	6,256	6,337	24,565
2017-18	6,524	6,610	25,456
2016-17	7,061	6,969	25,482
2015-16	6,917	7,036	26,034
2014-15	7,138	7,259	25,793
2013-14	7,249	7,366	27,235
2012-13	7,991	8,102	30,375
2011-12	8,528	8,748	35,191
2010-11	8,761	8,942	36,163
2009-10	8,834	9,127	38,639

Note: Reimbursable FTEs are used in calculating the annual state appropriation. Total FTEs include nonreimbursable courses, such as community education.

CLACKAMAS COMMUNITY COLLEGE
BUILDINGS
June 30, 2019

	Year Built	Square Feet	Major Use
Oregon City campus			
Barlow	1970	100,819	Administration, technical career education
Clairmont	1969	30,150	Horticulture
Community Center	1975	29,005	Student services
Dejardin	2004	18,216	Customized training, sciences
Dye Learning Center	1992	29,215	Library, extended learning
Environmental Learning Center	1997	1,080	Environmental education
Family Resource Center	1992	16,994	Child care, workforce development
Gregory Forum	1992	10,371	Meeting rooms
Industrial Technology Center	2018	44,424	Industrial Technology
Lewelling	1971	5,765	Campus services and warehouse
McLoughlin	1972	52,292	Humanities, bookstore
Neimeyer	2005	47,000	Music and theatre
Pauling	1981	41,030	Sciences
Randall	1972	60,775	Physical education and athletics
Roger Rook	2004	30,072	Enrollment services, English
Streeter	1991	14,992	Computer science, Business
Streeter Annex	2003	6,191	Computer science, Business
Studio Art	2003	11,407	Art
Total Oregon City campus		549,798	
Harmony Road campus			
Harmony Center	2008	46,000	Health sciences, outreach, adult education, Small Business Development Center
Harmony West	2018	43,795	Health sciences, outreach, adult education, Small Business Development Center
Wilsonville			
Wilsonville Training Center - original portion	1992	15,071	Utility training alliance
Wilsonville Training Center - addition	2001	34,980	Utility training alliance

This page intentionally left blank.

AUDIT COMMENTS AND DISCLOSURES REQUIRED BY STATE REGULATIONS

INDEPENDENT AUDITOR'S COMMENTS
REQUIRED BY OREGON STATE REGULATIONS

October 11, 2019

Board of Education
Clackamas Community College
Oregon City, Oregon

We have audited, in accordance with auditing standards generally accepted in the United States of America and the standards applicable to financial audits contained in *Government Auditing Standards* issued by the Comptroller General of the United States, the financial statements of Clackamas Community College as of and for the year ended June 30, 2019, and have issued our report thereon dated October 11, 2019.

Internal Control Over Financial Reporting

Our report on Clackamas Community College's internal control over financial reporting is presented elsewhere in this Comprehensive Annual Financial Report.

Compliance

As part of obtaining reasonable assurance about whether Clackamas Community College's financial statements are free from material misstatement, we performed tests of its compliance with certain provisions of laws, regulations, contracts and grant agreements, including the provisions of Oregon Revised Statutes as specified in Oregon Administrative Rules 162-10-000 through 162-10-320 of the Minimum Standards for Audits of Oregon Municipal Corporations, noncompliance with which could have a direct and material effect on the determination of financial statement amounts. However, providing an opinion on compliance with those provisions was not an objective of our audit and, accordingly, we do not express such an opinion.

We performed procedures to the extent we considered necessary to address the required comments and disclosures which included, but were not limited to, the following:

- Deposit of public funds with financial institutions (ORS Chapter 295).
- Indebtedness limitations, restrictions and repayment.
- Budgets legally required (ORS Chapter 294).
- Insurance and fidelity bonds in force or required by law.
- Programs funded from outside sources.
- Authorized investment of surplus funds (ORS Chapter 294).
- Public contracts and purchasing (ORS Chapters 279A, 279B, 279C).

In connection with our testing nothing came to our attention that caused us to believe Clackamas Community College was not in substantial compliance with certain provisions of laws, regulations, contracts and grant agreements, including the provisions of Oregon Revised Statutes as specified in Oregon Administrative Rules 162-10-000 through 162-10-320 of the Minimum Standards for Audits of Oregon Municipal Corporations, except as described in the following paragraph.

ORS 294.810 establishes limits on the total amount a local government may invest in the Oregon State Treasury's Local Government Investment Pool (LGIP). The College's investment in the LGIP exceeded these limits for approximately four months during the fiscal year.

Purpose of this Report

The purpose of this report is solely to describe the scope of our testing of internal control and compliance and the results of that testing, and not to provide an opinion on the effectiveness of the entity's internal control or on compliance. Accordingly, this communication is not suitable for any other purpose.

This report is intended solely for the information and use of the Board of Education, management and the Oregon Secretary of State and is not intended to be and should not be used by anyone other than these specified parties.

Kenneth Kuhns & Co.

Kenneth Kuhns & Co.

This page intentionally left blank.

GRANT COMPLIANCE

KENNETH KUHN & CO.
CERTIFIED PUBLIC ACCOUNTANTS
570 LIBERTY STREET S.E., SUITE 210
SALEM OREGON 97301-3594
TELEPHONE (503) 585-2550

INDEPENDENT AUDITOR'S REPORT ON THE INTERNAL CONTROL OVER
FINANCIAL REPORTING AND ON COMPLIANCE AND OTHER
MATTERS BASED ON AN AUDIT OF THE FINANCIAL
STATEMENTS PERFORMED IN ACCORDANCE WITH
GOVERNMENT AUDITING STANDARDS

October 11, 2019

Board of Education
Clackamas Community College
Oregon City, Oregon

We have audited, in accordance with auditing standards generally accepted in the United States of America and the standards applicable to financial audits contained in *Government Auditing Standards* issued by the Comptroller General of the United States, the financial statements of Clackamas Community College as of and for the year ended June 30, 2019, and have issued our report thereon dated October 11, 2019.

Internal Control Over Financial Reporting

In planning and performing our audit of the financial statements, we considered Clackamas Community College's internal control over financial reporting (internal control) to determine the audit procedures that are appropriate in the circumstances for the purpose of expressing our opinion on the financial statements, but not for the purpose of expressing an opinion on the effectiveness of Clackamas Community College's internal control. Accordingly, we do not express an opinion on the effectiveness of Clackamas Community College's internal control.

A deficiency in internal control exists when the design or operation of a control does not allow management or employees, in the normal course of performing their assigned functions, to prevent, or detect and correct, misstatements on a timely basis. *A material weakness* is a deficiency, or combination of deficiencies, in internal control, such that there is a reasonable possibility that a material misstatement of the entity's financial statements will not be prevented, or detected and corrected, on a timely basis. *A significant deficiency* is a deficiency, or combination of deficiencies, in internal control that is less severe than a material weakness, yet important enough to merit attention by those charged with governance.

Our consideration of internal control was for the limited purpose described in the first paragraph of this section and was not designed to identify all deficiencies in internal control that might be material weaknesses or significant deficiencies. Given these limitations, during our audit we did not identify any deficiencies in internal control that we consider to be material weaknesses. However, material weaknesses may exist that have not been identified.

Compliance and Other Matters

As part of obtaining reasonable assurance about whether Clackamas Community College's financial statements are free from material misstatement, we performed tests of its compliance with certain provisions of laws, regulations, contracts and grant agreements, noncompliance with which could have a direct and material effect on the determination of financial statement amounts. However, providing an opinion on compliance with those provisions was not an objective of our audit and, accordingly, we do not express such an opinion. The results of our tests disclosed no instances of noncompliance or other matters that are required to be reported under *Government Auditing Standards*.

Purpose of this Report

The purpose of this report is solely to describe the scope of our testing of internal control and compliance and the results of that testing, and not to provide an opinion on the effectiveness of the entity's internal control or on compliance. This report is an integral part of an audit performed in accordance with *Government Auditing Standards* in considering the entity's internal control and compliance. Accordingly, this communication is not suitable for any other purpose.

Kenneth Kuhns & Co.

Kenneth Kuhns & Co.

INDEPENDENT AUDITOR'S REPORT ON COMPLIANCE FOR EACH MAJOR
FEDERAL PROGRAM AND REPORT ON INTERNAL CONTROL OVER COMPLIANCE
REQUIRED BY THE UNIFORM GUIDANCE

October 11, 2019

Board of Education
Clackamas Community College
Oregon City, Oregon

Report on Compliance for Each Major Federal Program

We have audited Clackamas Community College's compliance with the types of compliance requirements described in the *OMB Compliance Supplement* that could have a direct and material effect on each of Clackamas Community College's major federal programs for the year ended June 30, 2019. Clackamas Community College's major federal programs are identified in the summary of audit results section of the accompanying schedule of findings and questioned costs.

Management's Responsibility

Management is responsible for compliance with federal statutes, regulations, and the terms and conditions of its federal awards applicable to its federal programs.

Auditor's Responsibility

Our responsibility is to express an opinion on compliance for each of Clackamas Community College's major federal programs based on our audit of the types of compliance requirements referred to above. We conducted our audit of compliance in accordance with auditing standards generally accepted in the United States of America; the standards applicable to financial audits contained in *Government Auditing Standards*, issued by the Comptroller General of the United States; and the audit requirements of Title 2 U.S. *Code of Federal Regulations* Part 200, *Uniform Administrative Requirements, Cost Principles, and Audit Requirements for Federal Awards* (Uniform Guidance). Those standards and the Uniform Guidance require that we plan and perform the audit to obtain reasonable assurance about whether noncompliance with the types of compliance requirements referred to above that could have a direct and material effect on a major federal program occurred. An audit includes examining, on a test basis, evidence about Clackamas Community College's compliance with those requirements and performing such other procedures as we considered necessary in the circumstances.

We believe that our audit provides a reasonable basis for our opinion on compliance for each major federal program. However, our audit does not provide a legal determination of Clackamas Community College's compliance.

Opinion on Each Major Federal Program

In our opinion, Clackamas Community College complied, in all material respects, with the types of compliance requirements referred to above that could have a direct and material effect on each of its major federal programs for the year ended June 30, 2019.

Report on Internal Control Over Compliance

Management of Clackamas Community College is responsible for establishing and maintaining effective internal control over compliance with the types of compliance requirements referred to above. In planning and performing our audit of compliance, we considered Clackamas Community College's internal control over compliance with the types of requirements that could have a direct and material effect on each major federal program to determine the auditing procedures that are appropriate in the circumstances for the purpose of expressing an opinion on compliance for each major federal program and to test and report on internal control over compliance in accordance with the Uniform Guidance, but not for the purpose of expressing an opinion on the effectiveness of internal control over compliance. Accordingly, we do not express an opinion on the effectiveness of Clackamas Community College's internal control over compliance.

A deficiency in internal control over compliance exists when the design or operation of a control over compliance does not allow management or employees, in the normal course of performing their assigned functions, to prevent, or detect and correct, noncompliance with a type of compliance requirement of a federal program on a timely basis. *A material weakness in internal control over compliance* is a deficiency, or combination of deficiencies, in internal control over compliance, such that there is a reasonable possibility that material noncompliance with a type of compliance requirement of a federal program will not be prevented, or detected and corrected, on a timely basis. *A significant deficiency in internal control over compliance* is a deficiency, or combination of deficiencies, in internal control over compliance with a type of compliance requirement of a federal program that is less severe than a material weakness in internal control over compliance, yet important enough to merit attention by those charged with governance.

Our consideration of internal control over compliance was for the limited purpose described in the first paragraph of this section and was not designed to identify all deficiencies in internal control over compliance that might be material weaknesses or significant deficiencies. We did not identify any deficiencies in internal control over compliance that we consider to be material weaknesses. However, material weaknesses may exist that have not been identified.

The purpose of this report on internal control over compliance is solely to describe the scope of our testing of internal control over compliance and the results of that testing based on the requirements of the Uniform Guidance. Accordingly, this report is not suitable for any other purpose.

Kenneth Kuhns & Co.

Kenneth Kuhns & Co.

CLACKAMAS COMMUNITY COLLEGE
SCHEDULE OF EXPENDITURES OF FEDERAL AWARDS
Year Ended June 30, 2019

Federal Grantor/Pass-through Grantor/ Program Title	Pass-Through Grantor's Number	Federal CFDA Number	Program Award	Receivable or (Unearned Revenue) July 1, 2018	Revenue Recog- nized (1)	Expenditures	Receivable or (Unearned Revenue) June 30, 2019
U.S. Department of Education							
Student Financial Aid Programs cluster							
PELL Grants		84 . 063	\$ 6,198,940	18,891	\$ 6,200,432	\$ 6,200,432	(20,987)
Direct Loans		84 . 268	6,218,679	476,313	6,218,679	6,218,679	(17,165)
Federal Work Study		84 . 033	187,904	-	160,031	160,031	16,094
Supplemental Education Opportunity Grants							
		84 . 007	153,654	-	155,445	155,445	65,750
<u>Student Financial Aid Programs cluster</u>							
			<u>12,759,177</u>	<u>495,204</u>	<u>12,734,587</u>	<u>12,734,588</u>	<u>43,692</u>
Clackamas Education Service District							
Perkins Basic Allocation 2018-2019	48919	84 . 048	220,000	-	208,179	208,179	208,179
Perkins Mini #2 Health Science SIMTIC	48919	84 . 048	2,000	-	1,964	1,964	1,964
Perkins Mini #3 Automotive SATA Air Respirators	48919	84 . 048	3,500	-	2,830	2,830	2,830
Perkins Special #3 Automotive Sanding System	48919	84 . 048	4,600	-	3,669	3,669	3,669
Perkins Basic Allocation 2017-2018	44281	84 . 048	220,000	98,835	-	-	-
<u>Perkins Basic Allocation 2017-2018</u>							
			<u>450,100</u>	<u>98,835</u>	<u>216,642</u>	<u>216,642</u>	<u>216,642</u>
Higher Education Coordinating Commission							
Title II	18-132	84 . 002	342,968	-	342,968	342,968	46,955
Title II	16-366D	84 . 002	299,701	299,701	-	-	-
<u>Title II</u>							
			<u>642,669</u>	<u>299,701</u>	<u>342,968</u>	<u>342,968</u>	<u>46,955</u>
Teachers College, Columbia University							
Adapting Lesson Study for Developmental Mathematics Instruction	OPP1160172 (Subaward 511142)	84 . 305A	20,000	-	12,557	12,557	2,557
<u>Adapting Lesson Study for Developmental Mathematics Instruction</u>							
			<u>20,000</u>	<u>-</u>	<u>12,557</u>	<u>12,557</u>	<u>2,557</u>
Total U.S. Department of Education							
			<u>13,871,946</u>	<u>893,740</u>	<u>13,306,754</u>	<u>13,306,754</u>	<u>309,846</u>

CLACKAMAS COMMUNITY COLLEGE
SCHEDULE OF EXPENDITURES OF FEDERAL AWARDS
Year Ended June 30, 2019

Federal Grantor/Pass-through Grantor/ Program Title	Pass-Through Grantor's Number	Federal CFDA Number	Program Award	Receivable or (Unearned Revenue) July 1, 2018	Revenue Recog- nized (1)	Expenditures	Receivable or (Unearned Revenue) June 30, 2019
U.S. Department of Labor							
WIOA Cluster							
Clackamas Workforce Partnership							
Formula Adult WIOA	AA-32218-18-A-41	17 . 258	326,361	-	326,361	326,361	20,739
Formula Adult WIOA	AA-30963-17-55-A-41	17 . 258	398,953	82,397	57,953	57,953	-
			<u>725,314</u>	<u>82,397</u>	<u>384,314</u>	<u>384,314</u>	<u>20,739</u>
Formula Dislocated Worker WIOA	AA-32218-18-A-41	17 . 278	520,339	-	520,339	520,339	21,565
Formula Dislocated Worker WIOA	AA-30963-17-55-A-41	17 . 278	503,747	132,521	-	-	-
Gap Fill West Linn Paper	AA-30963-17-55-A-41	17 . 278	250,657	21,521	103,475	103,475	24,715
			<u>1,274,743</u>	<u>154,042</u>	<u>623,814</u>	<u>623,814</u>	<u>46,280</u>
Clackamas Education Service District							
Youth Services Operational		17 . 259	13,988	-	12,587	12,587	4,540
Youth Services Operational		17 . 259	15,913	3,343	-	-	-
Sage Alternative School			5,400	(98)	-	-	(98)
Youth Services Sage Alternative		17 . 259	35,301	3,245	12,587	12,587	4,442
			<u>2,035,358</u>	<u>239,683</u>	<u>1,020,715</u>	<u>1,020,715</u>	<u>71,461</u>
Total WIOA Cluster							
Clackamas Workforce Partnership							
H1B ReBoot Northwest	HG-26675-15-60-A-44	17 . 268	822,720	97,417	61,662	61,662	698
H1B Northwest Promise	HG-30146-17-60-A-41	17 . 267	344,950	9,072	152,774	152,774	67,756
			<u>1,167,670</u>	<u>106,489</u>	<u>214,435</u>	<u>214,435</u>	<u>68,454</u>
Linking Employment Activities Pre- Releaes (LEAP)							
NEG Sector Partnership	PE-29006-16-60-A-41	17 . 270	411,800	31,623	83,811	83,811	-
			<u>411,800</u>	<u>31,623</u>	<u>83,811</u>	<u>83,811</u>	<u>-</u>
	EM-27363-15-60-A-41	17 . 277	605,000	33,504	-	-	-
			<u>605,000</u>	<u>33,504</u>	<u>-</u>	<u>-</u>	<u>-</u>

CLACKAMAS COMMUNITY COLLEGE
SCHEDULE OF EXPENDITURES OF FEDERAL AWARDS
Year Ended June 30, 2019

Federal Grantor/Pass-through Grantor/ Program Title	Pass-Through Grantor's Number	Federal CFDA Number	Program Award	Receivable or (Unearned Revenue) July 1, 2018	Revenue Recognized (1)	Expenditures	Receivable or (Unearned Revenue) June 30, 2019
State of Oregon Employment Department Oregon Apprenticeship Initiative in Manufacturing	18-229	17 . 268	42,728	21	36,508	36,508	15,977
U.S. Department of Labor DOL H1B Tech Hire	HG-293339-16-60-A-41	17 . 268	3,542,868	154,325	747,425	747,425	11,734
Total U.S. Department of Labor			<u>7,805,424</u>	<u>565,645</u>	<u>2,102,895</u>	<u>2,102,895</u>	<u>167,626</u>
U.S. Department of Transportation Metro & Federal Transit Administration Metro Regional Travel Options	934630	20 . 507	130,000	905	50,374	50,374	50,374
Total U.S. Department of Transportation			<u>130,000</u>	<u>905</u>	<u>50,374</u>	<u>50,374</u>	<u>50,374</u>
Small Business Administration Lane Community College							
SBA / SBA Portable Assistance	SBAHQ-18-B-0074	59 . 037	20,000	-	20,000	20,000	10,482
SBA / SBA Portable Assistance	SBAHQ-17-B-0074	59 . 037	30,000	30,000	-	-	-
SBC / SBA Project 2019	SBA-2019-143	59 . 037	33,000	-	16,285	16,285	16,285
SBC / SBA Project 2018	SBA-2018-143	59 . 037	33,000	16,356	16,644	16,644	-
Total Small Business Administration			<u>116,000</u>	<u>46,356</u>	<u>52,928</u>	<u>52,928</u>	<u>26,767</u>
U.S. Department of Agriculture Clackamas Workforce Partnership Timber Lake Job Corps	17-PA-11161700-001	10 . 699	108,998	4,833	33,051	33,051	7,161
Total U.S. Department of Agriculture			<u>108,998</u>	<u>4,833</u>	<u>33,051</u>	<u>33,051</u>	<u>7,161</u>

CLACKAMAS COMMUNITY COLLEGE
SCHEDULE OF EXPENDITURES OF FEDERAL AWARDS
Year Ended June 30, 2019

Federal Grantor/Pass-through Grantor/ Program Title	Pass-Through Grantor's Number	Federal CFDA Number	Program Award	Receivable or (Unearned Revenue) July 1, 2018	Revenue Recognized (1)	Expenditures	Receivable or (Unearned Revenue) June 30, 2019
U.S. Department of Health and Human Services							
Local Area High Schools		93 . 667	1,790	(1,025)	-	-	(1,025)
Children's Commission Summer School							
Portland State University							
Trans-NIH Research Support (EXITO - Administrative Core)	205CRE490	93 . 310	26,343	-	24,528	24,528	24,528
Trans-NIH Research Support (EXITO - Research Core)	205CRE489	93 . 310	55,261	-	28,179	28,179	28,179
Trans-NIH Research Support (EXITO - Administrative Core)	205CRE490	93 . 310	26,344	15,644	-	-	-
Trans-NIH Research Support (EXITO - Research Core)	205CRE489	93 . 310	60,153	39,293	-	-	-
			<u>169,891</u>	<u>53,912</u>	<u>52,707</u>	<u>52,707</u>	<u>51,682</u>
Total U.S Department of Health and Human Services							
General Services Administration							
Oregon Department of Administrative Services							
Donated Federal Surplus Property		39 . 003	-	-	833	833	-
			<u>\$ 22,202,258</u>	<u>\$ 1,565,391</u>	<u>\$ 15,599,542</u>	<u>\$ 15,599,542</u>	<u>\$ 613,455</u>
Total Federal Awards							

(1) Revenues are recognized when measurable and available.

CLACKAMAS COMMUNITY COLLEGE
NOTES TO SCHEDULE OF EXPENDITURES OF FEDERAL AWRDS
Year Ended June 30, 2019

Purpose of the Schedule

The accompanying schedule of expenditures of federal awards (the Schedule) is a supplementary schedule to Clackamas Community College's financial statements and is presented for purposes of additional analysis. Because the Schedule presents only a selected portion of the activities of the College, it is not intended to and does not present either the financial position or changes in net position of the College.

Significant Accounting Policies

The Reporting Entity

The reporting entity is fully described in Note 1 to the College's financial statements. The Schedule includes all federal financial assistance programs administered by the College for the year ended June 30, 2019.

Basis of Presentation

The information in the Schedule is presented in accordance with the requirements of Title 2 U.S. Code of Federal Regulations Part 200, Uniform Administrative Requirements, Cost Principles, and Audit Requirements for Federal Awards (Uniform Guidance).

Federal Financial Assistance

Pursuant to the Uniform Guidance, federal financial assistance is defined as assistance provided by a federal agency, either directly or indirectly, in the form of grants, contracts, cooperative agreements, loans, loan guarantees, property, interest subsidies, insurance or direct appropriations. Accordingly, nonmonetary federal assistance, including federal surplus property, is included in federal financial assistance and, therefore, is reported on the Schedule, if applicable. Federal financial assistance does not include direct federal cash assistance to individuals. Solicited contracts between the state and federal government for which the federal government procures tangible goods or services are not considered to be federal financial assistance.

Basis of Accounting

The expenditures in the Schedule are recognized as incurred based on the accrual basis of accounting and the cost accounting principles contained in the Uniform Guidance. Under those cost principles, certain types of expenditures are not allowable or are limited as to reimbursement. The College has elected not to use the ten percent de minimus indirect cost rate as allowed under the Uniform Guidance.

Matching Costs

The Schedule does not include matching expenditures.

CLACKAMAS COMMUNITY COLLEGE

SCHEDULE OF FINDINGS AND QUESTIONED COSTS

Year Ended June 30, 2019

A - SUMMARY OF AUDIT RESULTS:

1. The independent auditor's report expresses an unmodified opinion on the financial statements of Clackamas Community College.
2. There were no significant deficiencies in internal control over financial reporting reported during the audit of the financial statements of Clackamas Community College.
3. No instances of noncompliance material to the financial statements of Clackamas Community College were disclosed during the audit.
4. There were no significant deficiencies in internal control over compliance reported during the audit of the major federal award programs of Clackamas Community College.
5. The independent auditor's report on compliance for the major federal award programs of Clackamas Community College expresses an unmodified opinion.
6. No audit findings relative to the major federal award programs of Clackamas Community College are reported in this schedule.
7. The programs tested as major programs are as follows:

<u>Program Name</u>	<u>CFDA Number</u>
Student Financial Aid Cluster:	
Federal Supplemental Educational Opportunity Grants	84.007
Federal Work-Study Program	84.033
Federal Pell Grant Program	84.063
Federal Direct Student Loans	84.268
H-1B Job Training Grants	17.268

8. The threshold for distinguishing Type A programs from Type B programs was \$750,000.
9. Clackamas Community College was determined to be a low-risk auditee.

B - FINDINGS, FINANCIAL STATEMENTS AUDIT:

None.

C - FINDINGS AND QUESTIONED COSTS, MAJOR FEDERAL AWARD PROGRAMS
AUDIT:

None.